

Special Jurisdictions Appendix

Table of Contents

AGWSR Community Schools.....	3
BCLUW Community Schools	19
Ellsworth Community College	35
Iowa Falls-Alden Community Schools	45
Providence Township Fire District.....	61
South Hardin Community Schools.....	69

This Page Is Intentionally Blank

School District Profile

AGWSR

Community Schools

**Hardin County
Hazard Mitigation Plan 2023**

Local Planning Team

Table ACS.1: AGWSR Community Schools Local Planning Team

Name	Title	Jurisdiction	Meeting Attendance
Erik Smith	Superintendent	AGWSR School District	Round 1

Location and Services

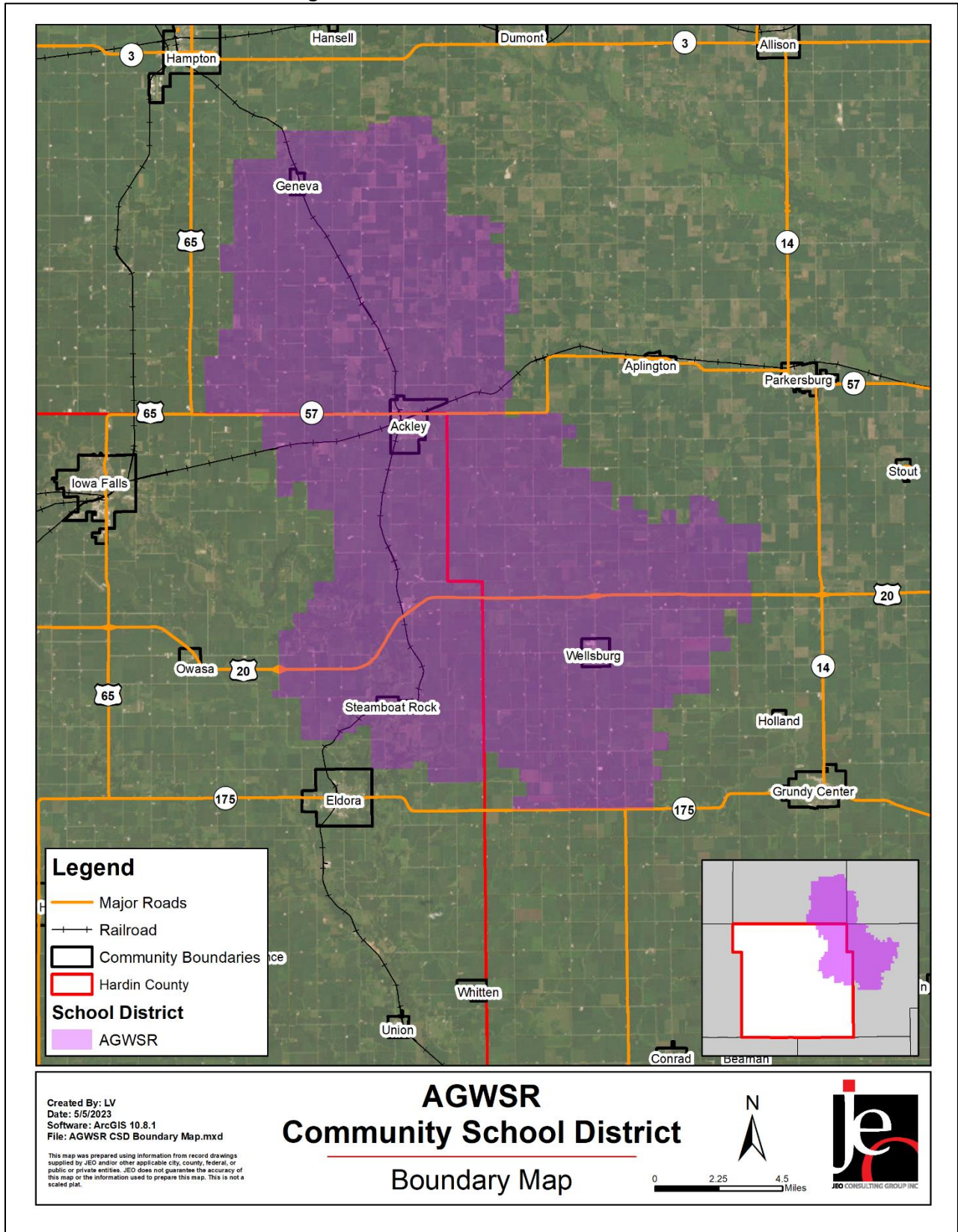
AGWSR Community Schools is located in northeast Hardin County, northwest Grundy County, southeast Franklin County, and southwest Butler County. The district serves students in the cities of Ackley, Geneva, Wellsburg, Steamboat Rock, and their surrounding areas. AGWSR Community Schools is comprised of four schools: AGWSR High School, AGWSR Middle School, Ackley Elementary, and Wellsburg Elementary. The Middle School and Wellsburg Elementary are located at the Wellsburg Attendance Center. The district office is located in Ackley. English and Spanish are both spoken in the district.

Demographics

Figure ACS.2 displays the historical student population trend starting with the 2005-06 school year and ending with the 2022-2023 year. It indicates that the student population steadily increased from 2013-2021 but has declined over the last two years. There are 650 students enrolled in the district.¹ The local planning team anticipates little change in student population over the next five years.

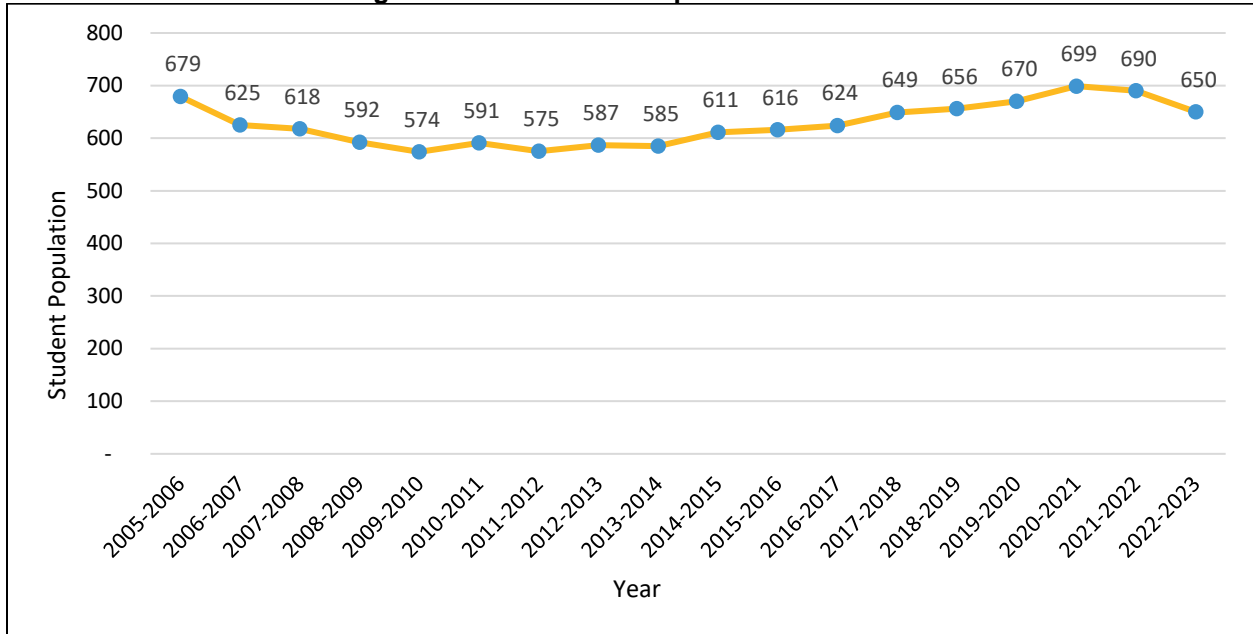
¹ Iowa Department of Education. "Iowa Public School District PreK-12 Enrollments by District, Grade, Race and Gender." Accessed May 2023. <https://eduateiowa.gov/data-reporting/education-statistics-pk-12>.

Figure ACS.1: AGWSR School District



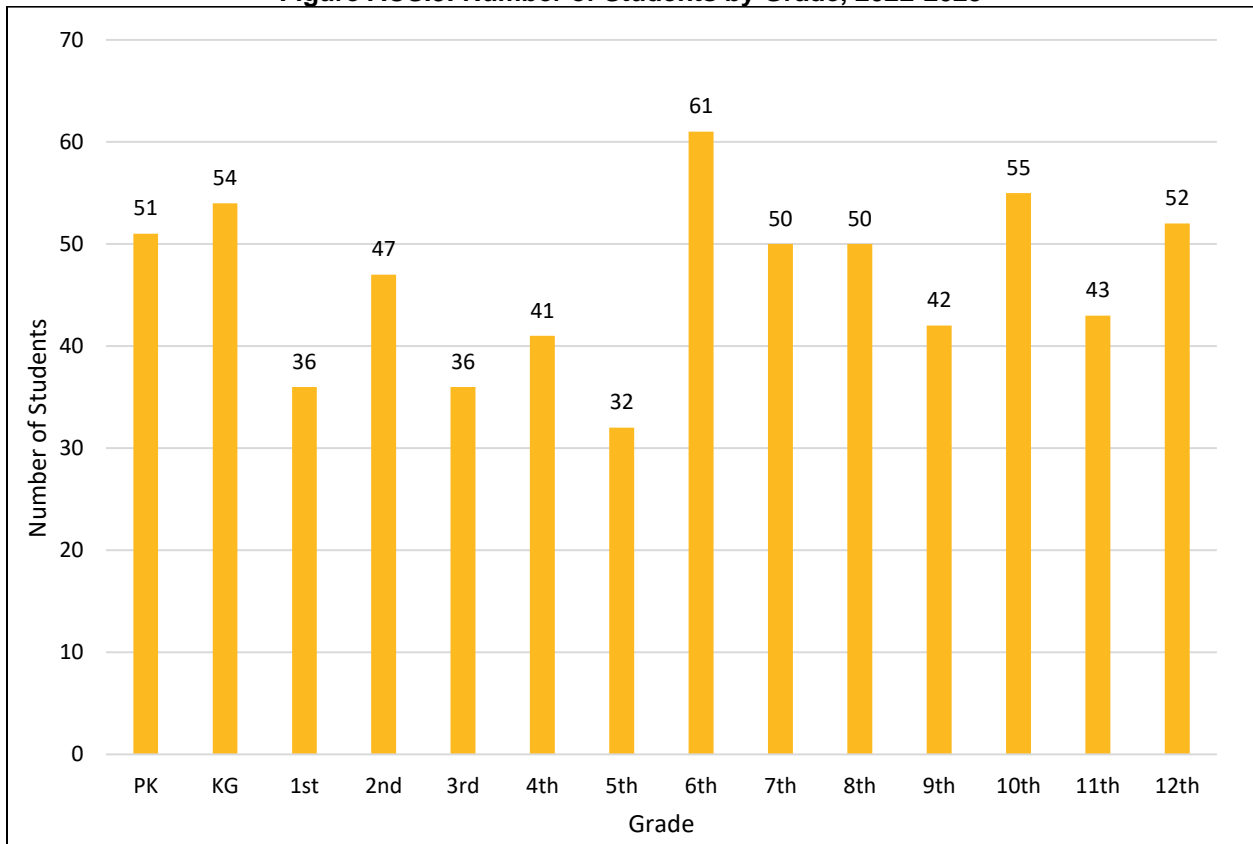
Section Seven: AGWSR School District Profile

Figure ACS.2: Student Population 2005-2023



Source: Iowa Department of Education

Figure ACS.3: Number of Students by Grade, 2022-2023



Source: Iowa Department of Education

Figure ACS.3 indicates that the largest number of students are in Kindergarten, 5th, and 10th grades. The lowest number of students are in 1st, 3rd, and 5th grades. According to the Iowa Department of Education, 38.6% of students receive either free or reduced priced meals at school. This is lower than the state average of 42.3%. Additionally, 14.7% of students are in the Special Education Program and 1.8% of students are English Language Learners. These particular students may be more vulnerable during a hazardous event than the rest of the student population.

Table ACS.2: K-12 Student Statistics, 2022-2023

	District	State of Iowa
Free/Reduced Priced Meals	38.6%	42.3%
Special Education Students*	14.7%	13.2%
English Language Learners (ESL)	1.8%	6.9%

Source: Iowa Department of Education²

*Special education student enrollment data currently only available for 2021-2022.

Administration and Staff

The school district has a superintendent, three principals, and supportive staff. The school board is made up of a seven-member panel. The district also has a number of additional departments and staff that may be available to implement hazard mitigation initiatives. These include maintenance directors and the technology director. The district employs 100 teachers and staff.

Capability Assessment

The capability assessment consisted of a review of local existing policies, regulations, plans, and programs with hazard mitigation capabilities. The following tables summarize the district’s planning and regulatory capability; administrative and technical capability; fiscal capability; educational and outreach capability; and overall capability to implement mitigation projects. The district notifies parents and staff about emergency events through emails, text messages, and social media. Notifications are available in all languages that district students speak.

Table ACS.3: Capability Assessment

Capability/Planning Mechanism		Yes/No
Planning Capability	Facility Improvements Plan	Yes
	Continuity of Operations Plan	No
	Crisis Response Plan	Yes
	Strategic Plan	No
	Other (if any)	
Administration & Technical Capability	Grant Manager	No
	Mutual Aid Agreement	No
	Other (if any)	
Fiscal Capability	Applied for grants in the past	Yes
	Awarded grants in the past	Yes
	Authority to levy taxes for specific purposes such as mitigation projects	Yes

² Iowa Department of Education. “Student Demographic Information.” Accessed May 2023. <https://educateiowa.gov/data-reporting/education-statistics-pk-12>

Section Seven: AGWSR School District Profile

	General Obligation Revenue or Special Tax Bonds	Yes
	Approved bonds in the past	Yes
	Flood Insurance	No
	Other (if any)	
Education & Outreach Capability	Local school groups or non-profit organizations focused on environmental protection, emergency preparedness, access, and functional needs populations, etc. (Ex. Parent groups, Crisis Response Teams, etc.)	No
	Hazard education or information program	No
	StormReady Certification	No
	Other (if any)	
Drills	Fire	2 / year
	Tornado	2 / year
	Intruder	0 / year
	Bus evacuation	1 / year
	Evacuation	0 / year
	Other (if any)	

Table ACS.4: Overall Capability

Overall Capability	Limited/Moderate/High
Financial resources needed to implement mitigation projects	High
Staff/expertise to implement projects	Moderate
Public support to implement projects	Moderate
Time to devote to hazard mitigation	Limited
Ability to expand and improve identified capabilities to achieve mitigation	Limited

Plan Integration

Grants and Funding

The local planning team indicated that district funds are currently sufficient to pursue new projects. Funds have remained about the same over recent years. The district has not applied for any grants in the last five years.

Crisis Response Plan

The school district uses a Crisis Response Plan to react to hazardous events. The Crisis Response Plan discusses natural hazards, addresses shelter in place protocols, identifies scenarios requiring evacuation and critical evacuation routes, and identifies sheltering locations. There is currently no timeline to update the plan.

Future Development Trends

In the last five years, the district has demolished a building, upgraded the HVAC in Wellsburg, and built an addition in Ackley. There are tentative plans for construction/renovation in the coming years, but those have not been solidified yet.

Community Lifelines

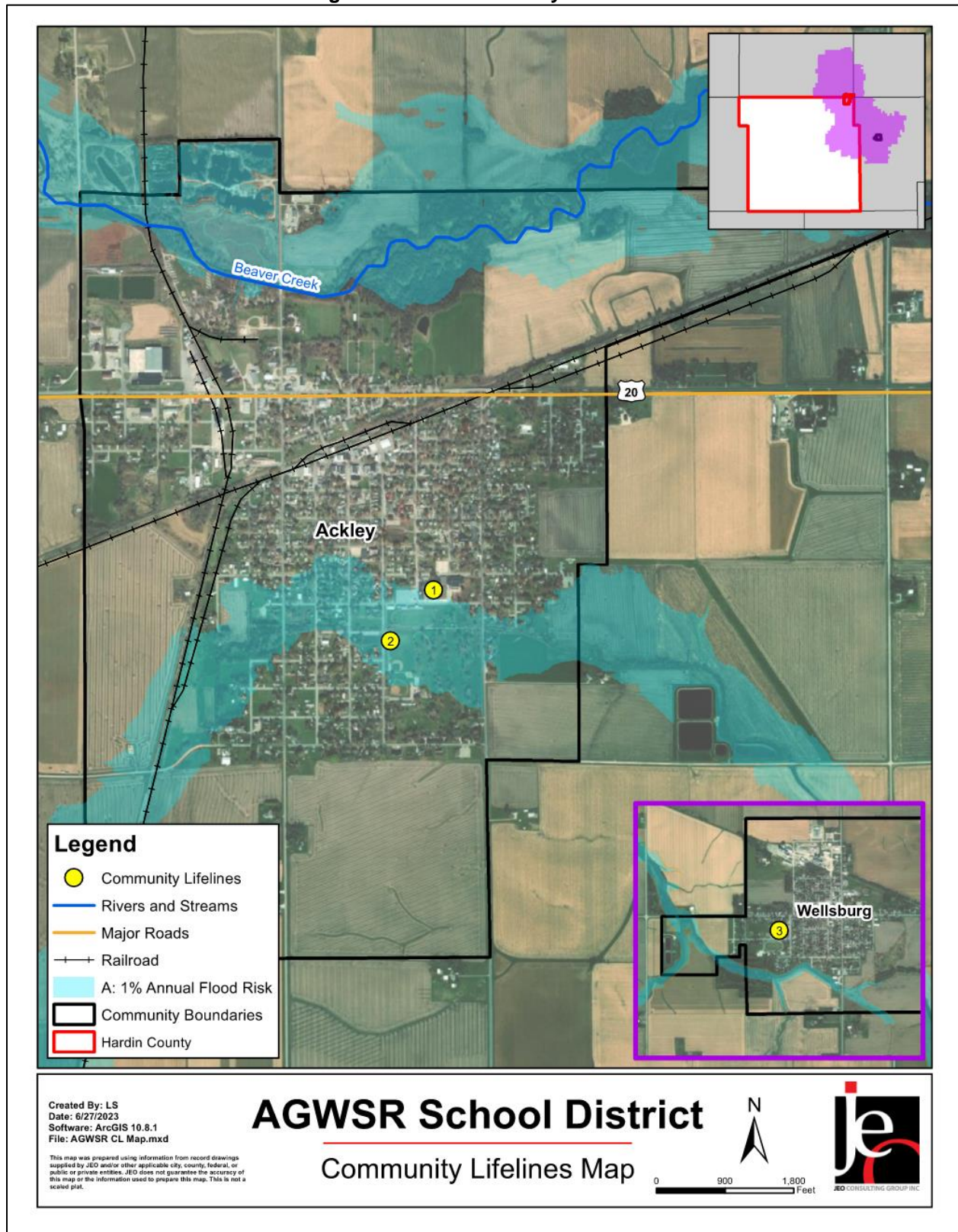
Each participating jurisdiction identified community lifelines that are vital for disaster response and essential for returning the jurisdiction’s functions to normal during and after a disaster per the FEMA Community Lifelines guidance. The FEMA-recognized lifelines include: Safety and Security; Food, Water, and Sheltering; Health and Medical; Energy; Communications; Transportation; and Hazardous Material facilities.



Table ACS.5: Community Lifelines

CL#	Name	Lifeline Type	Generator (G) Shelter (S)	Floodplain (Y/N)
1	AGWSR Schools	Other	S	Y
2	AGWSR Bus Barn	Other	-	N
3	AGWSR Wellsburg Building	Other	-	N

Figure ACS.4: Community Lifelines



Transportation

According to the planning team, a few bus accidents and medical emergencies on buses have impacted any schools in the district. No other incidents were identified. There are currently 12 buses in the district which bus about 200 students to and from school.

Hazardous Materials

The Hazardous Materials Lifeline includes chemical storage facilities, pipelines, and transported chemical tanks. There are multiple gas transmission pipelines that travel near Ackley and Wellsburg. These can be seen in Figures ACS.5. and ACS.6

Figure ACS.5: Ackley Area Pipelines

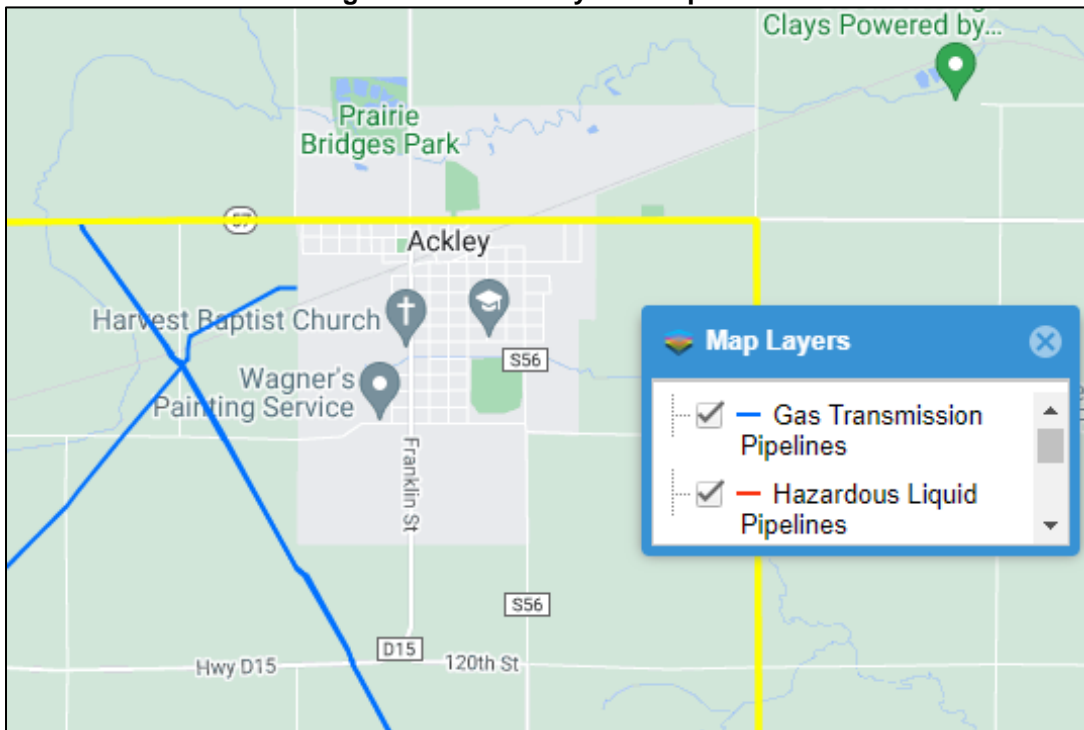
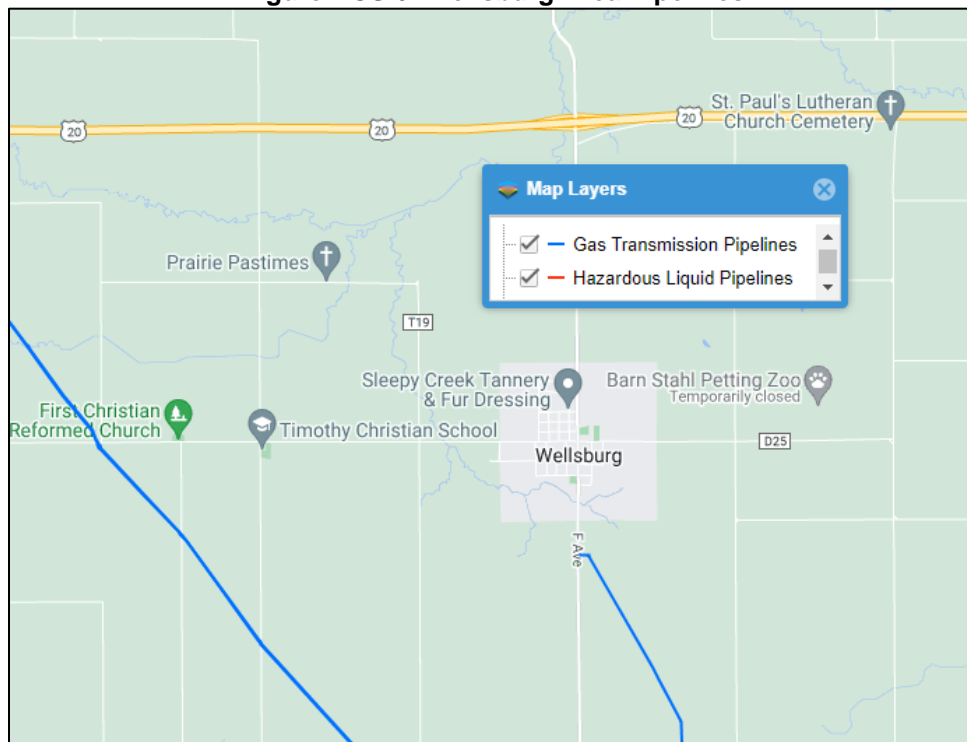


Figure ACS.6: Wellsburg Area Pipelines



Source: National Pipeline Mapping System³

According to the Tier II System reports submitted to the Iowa Department of Natural Resources, there are seven chemical storage sites within or near Ackley and Wellsburg that contain hazardous materials (listed in Table ACS.6). No chemical releases have occurred that caused a school to lock down or evacuate.

Table ACS.6: Chemical Storage Lifelines

Facility Name	Address
AgVantage FS, A Division of Growmark, Inc. - Ackley West	27354 Hwy 57, Ackley
CenturyLink - Ackley CDO	305 Mitchel Street, Ackley
Concrete Inc.--Ackley	104 14th Street, Ackley
Innovative Ag Services - Cleves	33181 159th Street, Ackley
Landus Cooperative - Macy	11277 County Road S55, Ackley
ITC Midwest Wellsburg	15450 220th Street, Wellsburg
Nutrien Ag Solutions 2407	205 N Monroe Street, Wellsburg

Source: E-Plan⁴

³ National Pipeline Mapping System. 2022. "Public Viewer." Accessed April 2023. <https://pvnpm.phmsa.dot.gov/PublicViewer/>.

⁴ E-Plan – Emergency Response Information System. 2022. "Facility Search." Accessed November 2022. <https://erplan.net/eplan/actions/facilitySearch.htm>.

Hazard Prioritization

The Hardin County Hazard Mitigation Plan evaluates a range of natural and manmade hazards which pose a risk to the county, communities, and other participants. For a review and analysis of identified regional hazards, please see *Section Four: Risk Assessment*. A full list of historical hazard occurrences can be found in the Hardin County jurisdictional profile.

The hazards discussed in detail below were selected by the local planning team from the regional hazard list as the relevant hazards for the jurisdiction. The selected hazards were prioritized by the local planning team based on historical hazard occurrences, potential impacts, and the district’s capabilities.

Severe Winter Storms

Severe winter storms are a regular part of the climate and weather for the school district. Severe winter storms include blizzards, ice accumulation, heavy snow, and winter storms. These storms can cause power outages during bitterly cold temperatures, road closures, and economic impacts. According to the NCEI, there were 87 winter storm events in Hardin County from 1996 to 2022.

The planning team identified this as a hazard of top concern due mainly to potential for transportation disruption, power outages, and loss of service to students. In recent years there were several storms that impacted the area, but no damage to the schools was reported. Backup generators are needed to operate the buildings to keep them open for students and the public.

Tornado and Windstorm

The main concern for this hazard is the potential for disruption to services and disruption to the community. A storm shelter was included in a building addition in 2013. Backup generators are needed to operate the buildings to keep them open for students and the public.

Transportation Incident

Past medical emergencies on buses due to student health and bus accidents due to driver error make this a top hazard of concern for the planning team. Disruption to families and district services is a main concern.

Mitigation Strategy

Completed Mitigation and Strategic Actions

Mitigation Action	Update Schools with Fire Marshal Recommendations
Description	Install fire marshal recommendations for school upgrades like fire doors.
Hazard(s)	Dam Failure, Earthquake, Extreme Temperature, Flooding, Grass/Wildfire, Hazardous Materials Release, Infrastructure Failure, Severe Thunderstorms, Severe Winter Storms, Terrorism & Civil Unrest, Tornado & Windstorm, Transportation Incident
Status	Recommendations were implemented.

Continued Mitigation and Strategic Actions

Mitigation Action	Complete Required Hazard Drills Every Year
Description	Complete required practice drills for the school district, including: bus evacuation, tornado, and fire drills. Ensure bus drivers are properly trained.
Hazard(s)	Earthquake, Extreme Temperature, Flooding, Grass/Wildfire, Hazardous Materials Release, Infrastructure Failure, Severe Thunderstorms, Severe Winter Storms, Terrorism & Civil Unrest, Tornado & Windstorm, Transportation Incident
Estimated Cost	Staff Time
Local Funding Source	AGWSR Community School District
Timeline	Ongoing
Priority	High
Lead Agency/Department	AGWSR Community School District
Status	Implemented yearly.

Mitigation Action	Create Debris Removal Plan
Description	Develop a plan to remove debris and obstructions from school grounds immediately following a hazard event.
Hazard(s)	Flooding, Infrastructure Failure
Estimated Cost	TBD
Local Funding Source	AGWSR Community School District
Timeline	2-5 years
Priority	Medium
Lead Agency/Department	AGWSR Community School District
Status	Not started

Mitigation Action	Create Hazardous Materials Removal Plan
Description	Develop a plan to remove hazardous materials from school grounds during an event.
Hazard(s)	Hazardous Materials Release
Estimated Cost	TBD
Local Funding Source	AGWSR Community School District
Timeline	2-5 years
Priority	Medium
Lead Agency/Department	AGWSR Community School District
Status	Not started

Mitigation Action	Promote Home Disaster Preparedness
Description	Create a program to educate AGWSR students and parents about the dangers of hazards and how to prepare through informational flyers, meetings, or other interactive media like drills and workshops.
Hazard(s)	Animal & Plant Disease, Dam Failure, Drought, Earthquake, Expansive Soils, Extreme Temperature, Flooding, Grass/Wildfire, Hazardous Materials Release, Human Infectious Diseases, Infrastructure Failure, Severe Thunderstorms, Severe Winter Storms, Sinkhole, Terrorism & Civil Unrest, Tornado & Windstorm, Transportation Incident
Estimated Cost	TBD
Local Funding Source	AGWSR Community School District
Timeline	2-5 years
Priority	Medium
Lead Agency/Department	AGWSR Community School District
Status	Not started

Mitigation Action	Identify Backup Communication Equipment to be Purchased for a Communications Failure
Description	Identify back up communication equipment to be purchased for widespread breakdown or disruption of normal communication system capabilities including loss of or long-term interruption of local government radio facilities and major telephone outages due to mechanical failure, traffic accidents, power failure, line severance, and weather.
Hazard(s)	Animal & Plant Disease, Dam Failure, Drought, Earthquake, Expansive Soils, Extreme Temperature, Flooding, Grass/Wildfire, Hazardous Materials Release, Human Infectious Diseases, Infrastructure Failure, Severe Thunderstorms, Severe Winter Storms, Sinkhole, Terrorism & Civil Unrest, Tornado & Windstorm, Transportation Incident
Estimated Cost	TBD
Local Funding Source	AGWSR Community School District
Timeline	2-5 years
Priority	Medium
Lead Agency/Department	AGWSR Community School District
Status	The district will be receiving an emergency radio via the state's safety initiative.

Section Seven: AGWSR School District Profile

Mitigation Action	Purchase Generators for School Buildings
Description	Purchase generators (one portable) for use in school buildings and offices.
Hazard(s)	Dam Failure, Earthquake, Extreme Temperature, Flooding, Grass/Wildfire, Hazardous Materials Release, Human Infectious Diseases, Infrastructure Failure, Severe Thunderstorms, Severe Winter Storms, Terrorism & Civil Unrest, Tornado & Windstorm, Transportation Incident
Estimated Cost	\$20,000+ per generator
Local Funding Source	AGWSR Community School District
Timeline	2-5 years
Priority	Medium
Lead Agency/Department	AGWSR Community School District
Status	Not started

Mitigation Action	Review of Safety Drill Procedures
Description	Review and possibly update the current safety drills at the AGWSR schools.
Hazard(s)	Dam Failure, Earthquake, Extreme Temperature, Flooding, Grass/Wildfire, Hazardous Materials Release, Human Infectious Diseases, Infrastructure Failure, Severe Thunderstorms, Severe Winter Storms, Terrorism & Civil Unrest, Tornado & Windstorm, Transportation Incident
Estimated Cost	Staff Time
Local Funding Source	AGWSR Community School District
Timeline	2-5 years
Priority	Medium
Lead Agency/Department	AGWSR Community School District
Status	Drill reviews and updates occur on a regular basis.

Mitigation Action	Advanced Alert System
Description	Install an advanced alert system at all AGWSR schools.
Hazard(s)	Animal & Plant Disease, Dam Failure, Drought, Earthquake, Expansive Soils, Extreme Temperature, Flooding, Grass/Wildfire, Hazardous Materials Release, Human Infectious Diseases, Infrastructure Failure, Severe Thunderstorms, Severe Winter Storms, Sinkhole, Terrorism & Civil Unrest, Tornado & Windstorm, Transportation Incident
Estimated Cost	TBD
Local Funding Source	AGWSR Community School District
Timeline	5+ years
Priority	Low
Lead Agency/Department	AGWSR Community School District
Status	Not started

Mitigation Action	Construct a Safe Room in the High School and Middle School
Description	Construct a safe room for students and visitors to use during severe weather. A safe room was built in Ackley Elementary.
Hazard(s)	Severe Thunderstorms, Severe Winter Storms, Tornado and Windstorm
Estimated Cost	TBD
Local Funding Source	AGWSR Community School District
Timeline	5+ years
Priority	Low
Lead Agency/Department	AGWSR Community School District
Status	A safe room was built in Ackley Elementary.

Mitigation Action	Public Awareness and Education
Description	Through activities such as outreach projects, distribution of maps, and environmental education, increase student and staff awareness of natural and manmade hazards.
Hazard(s)	Animal & Plant Disease, Dam Failure, Drought, Earthquake, Expansive Soils, Extreme Temperature, Flooding, Grass/Wildfire, Hazardous Materials Release, Human Infectious Diseases, Infrastructure Failure, Severe Thunderstorms, Severe Winter Storms, Sinkhole, Terrorism & Civil Unrest, Tornado & Windstorm, Transportation Incident
Estimated Cost	Staff Time
Local Funding Source	AGWSR Community School District
Timeline	2-5 years
Priority	Medium
Lead Agency/Department	AGWSR Community School District
Status	In progress

Plan Maintenance

Hazard Mitigation Plans should be living documents and updated regularly to reflect changes in hazard events, priorities, and mitigation actions. These updates are encouraged to occur after every major disaster event, alongside planning documents (e.g., annual budgets, etc.), during the fall before the HMA grant cycle begins, and/or prior to other funding opportunity cycles begin.

The local planning team is responsible for reviewing and updating this profile as changes occur or after a major event. The local planning team will include the Superintendent and the School Board. The plan will be reviewed annually. The district will involve students, staff, and parents in the plan review and revision process through updates on social media and website updates.

This Page Is Intentionally Blank

School District Profile

BCLUW

Community Schools

**Hardin County
Hazard Mitigation Plan 2023**

Local Planning Team

Table BCS.1: BCLUW Community Schools Local Planning Team

Name	Title	Jurisdiction	Meeting Attendance
Ben Petty	Superintendent	BCLUW School District	Video Recordings

Location and Services

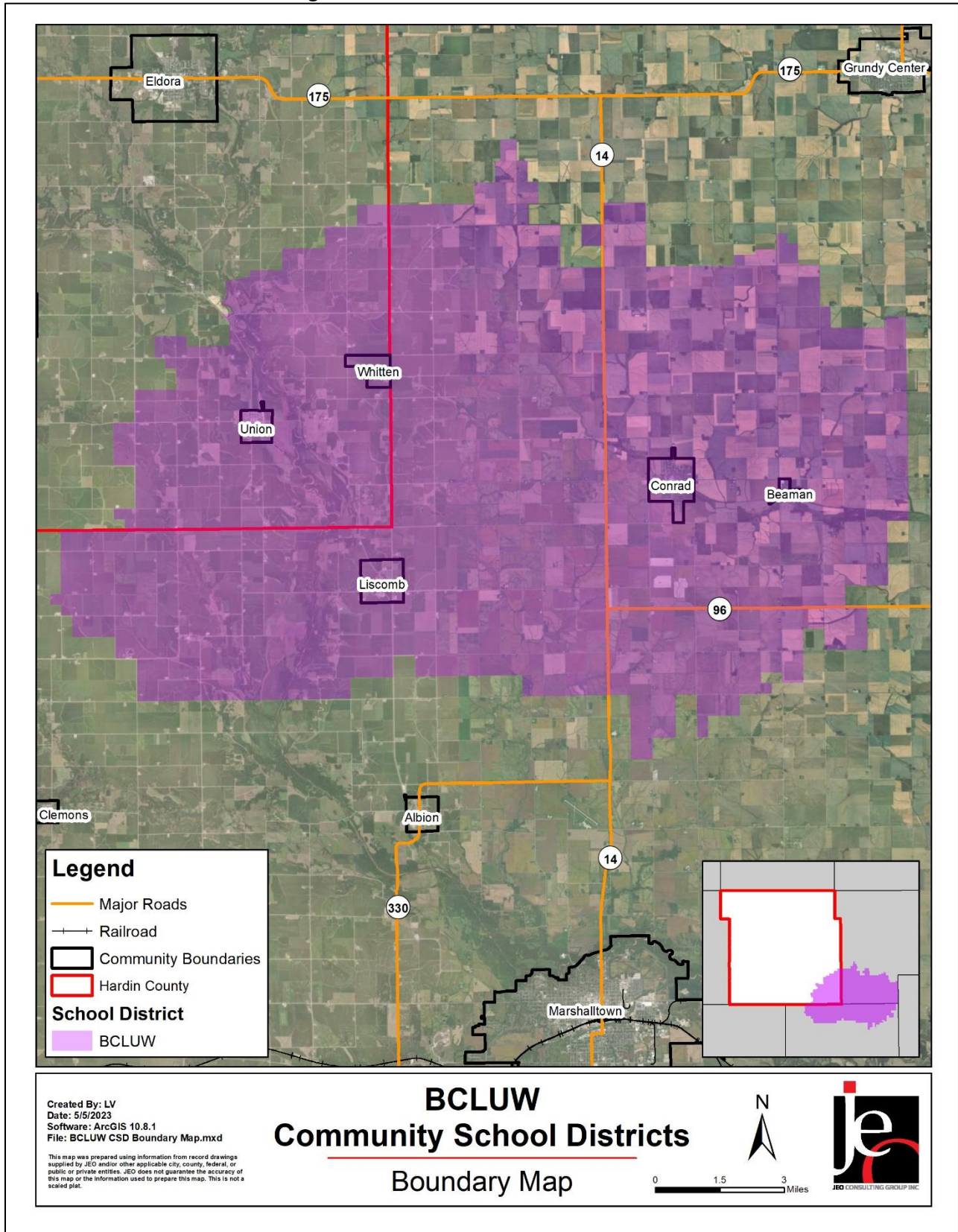
BCLUW Community Schools is located in southeast Hardin County, southwest Grundy County, and northern Marshall County. The district serves students in the cities of Beaman, Conrad, Liscomb, Union, Whitten, and their surrounding areas. BCLUW Community Schools is comprised of three schools: BCLUW High School, BCLUW Middle School, and BCLUW Elementary. The district office is located in Conrad. Some families from surrounding areas such as Marshalltown, Eldora, and Gladbrook-Reinbeck open-enroll into BCLUW. The planning team also indicated that a small number of Spanish speakers in the district.

Demographics

Figure BCS.2 displays the historical student population trend starting with the 2005-06 school year and ending with the 2022-2023 year. It indicates that the student population has steadily decreased since 2014. There are 506 students enrolled in the district.⁵ The district anticipates a decrease in student population over the next five years due to the smaller classes coming into kindergarten and the shift of population from rural areas to urban/suburban.

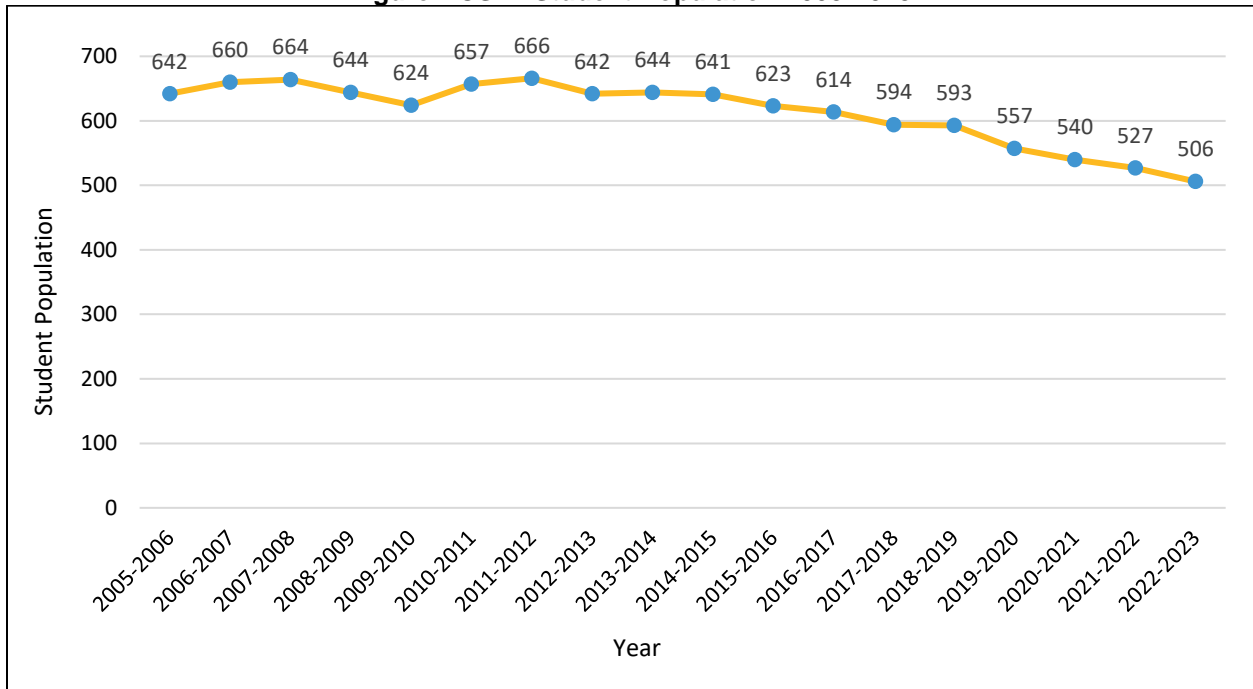
⁵ Iowa Department of Education. "Iowa Public School District PreK-12 Enrollments by District, Grade, Race and Gender." Accessed May 2023. <https://educateiowa.gov/data-reporting/education-statistics-pk-12>.

Figure BCS.1: BCLUW School District



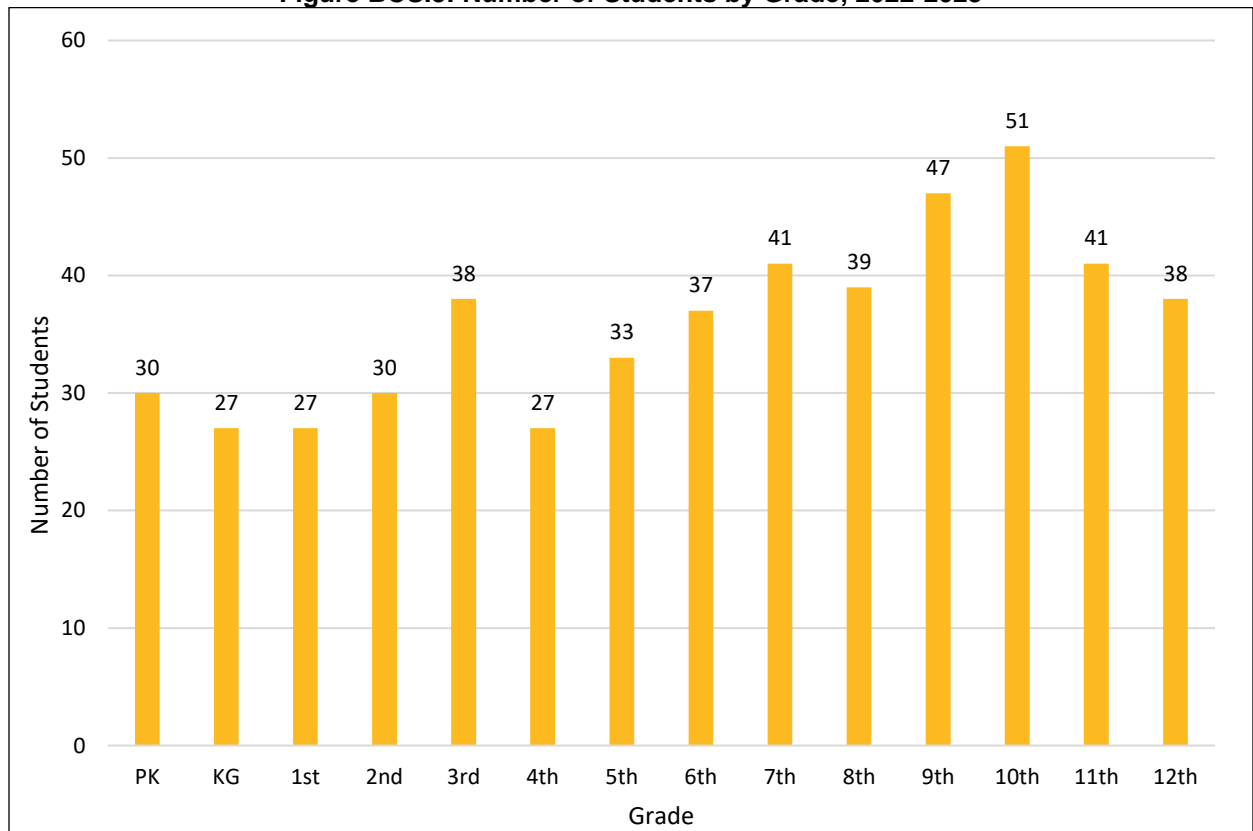
Section Seven: BCLUW School District Profile

Figure BCS.2: Student Population 2005-2023



Source: Iowa Department of Education

Figure BCS.3: Number of Students by Grade, 2022-2023



Source: Iowa Department of Education

Figure BCS.3 indicates that the largest number of students are in 9th and 10th grades. The lowest number of students are in Kindergarten, 1st, and 4th grades. According to the Iowa Department of Education, 41.2% of students receive either free or reduced priced meals at school. This is lower than the state average of 42.3%. Additionally, 16.9% of students are in the Special Education Program and 1.1% of students are English Language Learners. These particular students may be more vulnerable during a hazardous event than the rest of the student population.

Table BCS.2: K-12 Student Statistics, 2022-2023

	District	State of Iowa
Free/Reduced Priced Meals	41.2%	42.3%
Special Education Students*	16.9%	13.2%
English Language Learners (ESL)	1.1%	6.9%

Source: Iowa Department of Education⁶

*Special education student enrollment data currently only available for 2021-2022.

Administration and Staff

The school district has a superintendent, three principals, and supportive staff. The school board is made up of a seven-member panel. The district also has a number of additional departments and staff that may be available to implement hazard mitigation initiatives. The district trains its staff on emergency procedures such as Stop the Bleed and CRCC - Armed Intruder Training (January 2023). The district employs 52 teachers and a total of 95 staff.

Capability Assessment

The capability assessment consisted of a review of local existing policies, regulations, plans, and programs with hazard mitigation capabilities. The following tables summarize the district's planning and regulatory capability; administrative and technical capability; fiscal capability; educational and outreach capability; and overall capability to implement mitigation projects.

The district regularly conducts drills with students and staff. Other programs and partnerships with local first responders are conducted regularly. Some of these include a canine drug search training at the high school, a fire department education program at the elementary school, and CRCC training to staff provided by state troopers and emergency management .

Table BCS.3: Capability Assessment

Capability/Planning Mechanism		Yes/No
Planning Capability	Facility Improvements Plan	Yes
	Continuity of Operations Plan	No
	Crisis Response Plan	Yes
	Strategic Plan	No
	Other (if any)	
Administration & Technical Capability	Grant Manager	No
	Mutual Aid Agreement	No
	Other (if any)	

⁶ Iowa Department of Education. "Student Demographic Information." Accessed May 2023. <https://educateiowa.gov/data-reporting/education-statistics-pk-12>

Section Seven: BCLUW School District Profile

Fiscal Capability	Applied for grants in the past	Yes
	Awarded grants in the past	Yes
	Authority to levy taxes for specific purposes such as mitigation projects	Yes – Limited
	General Obligation Revenue or Special Tax Bonds	No
	Approved bonds in the past	Yes
	Flood Insurance	No
	Other (if any)	
Education & Outreach Capability	Local school groups or non-profit organizations focused on environmental protection, emergency preparedness, access, and functional needs populations, etc. (Ex. Parent groups, Crisis Response Teams, etc.)	Yes
	Hazard education or information program	No
	StormReady Certification	No
	Other (if any)	
Drills	Fire	4 / year
	Tornado	4 / year
	Intruder	1 / year (Staff)
	Bus evacuation	2 / year
	Evacuation	0 / year
	Other (if any)	

Table BCS.4: Overall Capability

Overall Capability	Limited/Moderate/High
Financial resources needed to implement mitigation projects	Moderate
Staff/expertise to implement projects	Moderate
Public support to implement projects	Moderate
Time to devote to hazard mitigation	Limited
Ability to expand and improve identified capabilities to achieve mitigation	Moderate

Plan Integration

Grants and Funding

The local planning team indicated that district funds are currently limited to maintaining current facilities and systems, but funds for some projects could be available. The district has submitted a school safety plan to the state for additional funding. District funds have slightly increased over recent years. In the last five years, the district was awarded funding for tree planting, Stop the Bleed Cabinets/kits, electric buses and charging infrastructure, and funding from the Iowa STEM BEST program.

Crisis Response Plan

The school districts use a Crisis Response Plan to react to hazardous events. The Crisis Response Plan discusses natural hazards, addresses shelter in place protocols, identifies scenarios requiring evacuation, identifies sheltering locations, and identifies opportunities for mitigation following an event. In a future update, the district intends to identify critical evacuation routes and identify any gaps related to hazards. The plan is scheduled to be updated in fall 2023.

Future Development Trends

No major changes have occurred in the last five years other than some remodeling of the high school gym and some classrooms. There are currently no plans for new construction/renovation, but this could change in the next few years if the board decides to reduce the number of facilities due to ongoing enrollment decline.

Community Lifelines

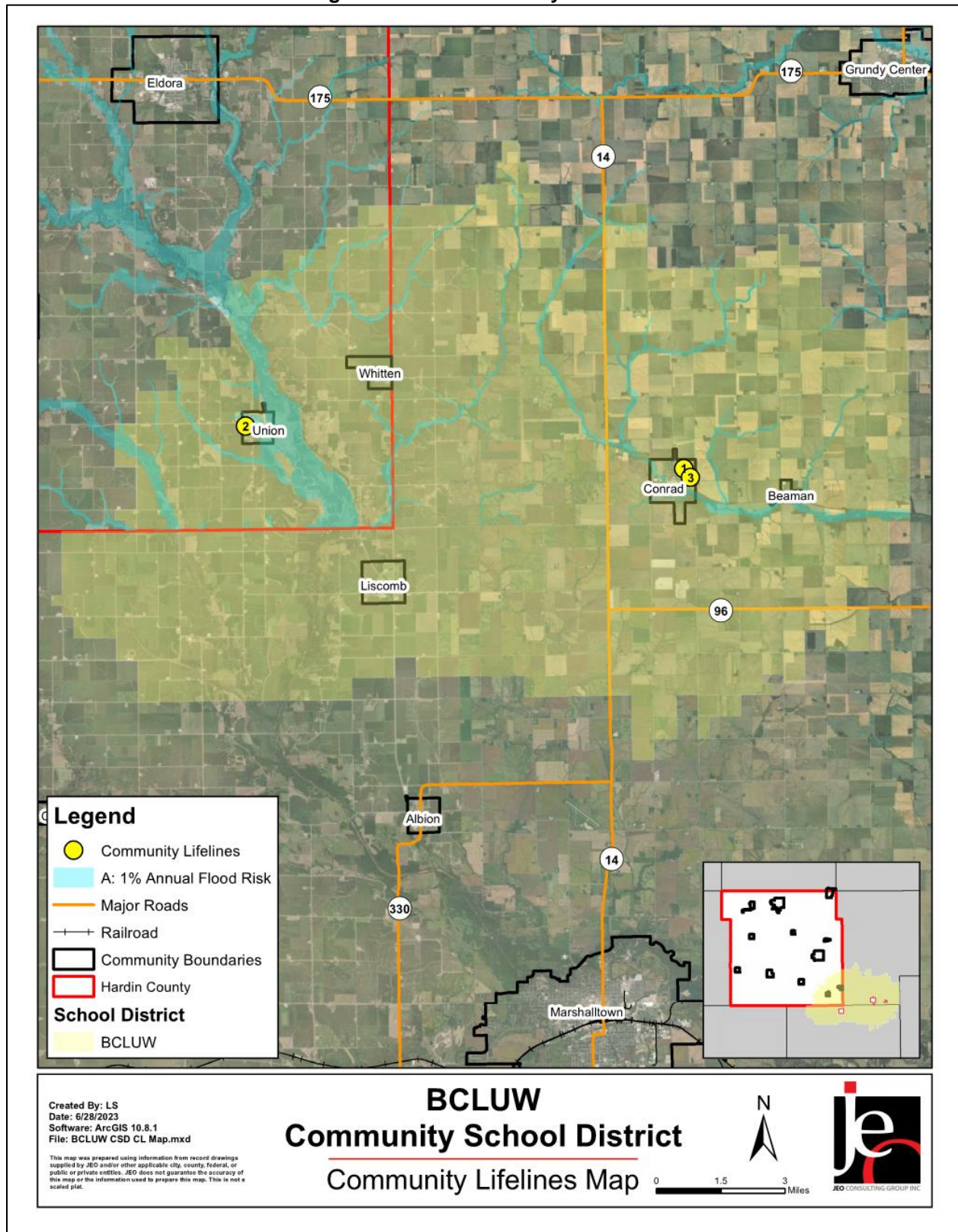
Each participating jurisdiction identified community lifelines that are vital for disaster response and essential for returning the jurisdiction’s functions to normal during and after a disaster per the FEMA Community Lifelines guidance. The FEMA-recognized lifelines include: Safety and Security; Food, Water, and Shelter; Health and Medical; Energy; Communication; Transportation; and Hazardous Material facilities.



Table BCS.5: Community Lifelines

CL#	Name	Lifeline Type	Generator (G) Shelter (S)	Floodplain (Y/N)
1	BCLUW Elementary School	Other	S	N
2	BCLUW Middle School	Other	S	N
3	BCLUW High School	Other	S	N

Figure BCS.4: Community Lifelines



Transportation

According to the local planning team, no significant transportation incidents have impacted the district. The district owns 12 buses that transport students to and from school. Approximately 230 children are bused to and from school.

Hazardous Materials

The Hazardous Materials Lifeline includes chemical storage facilities, pipelines, and transported chemical tanks. There are multiple pipelines that travel near Conrad and Union. These can be seen in Figures BCS.5. and BCS.6

Figure BCS.5: Conrad Area Pipelines

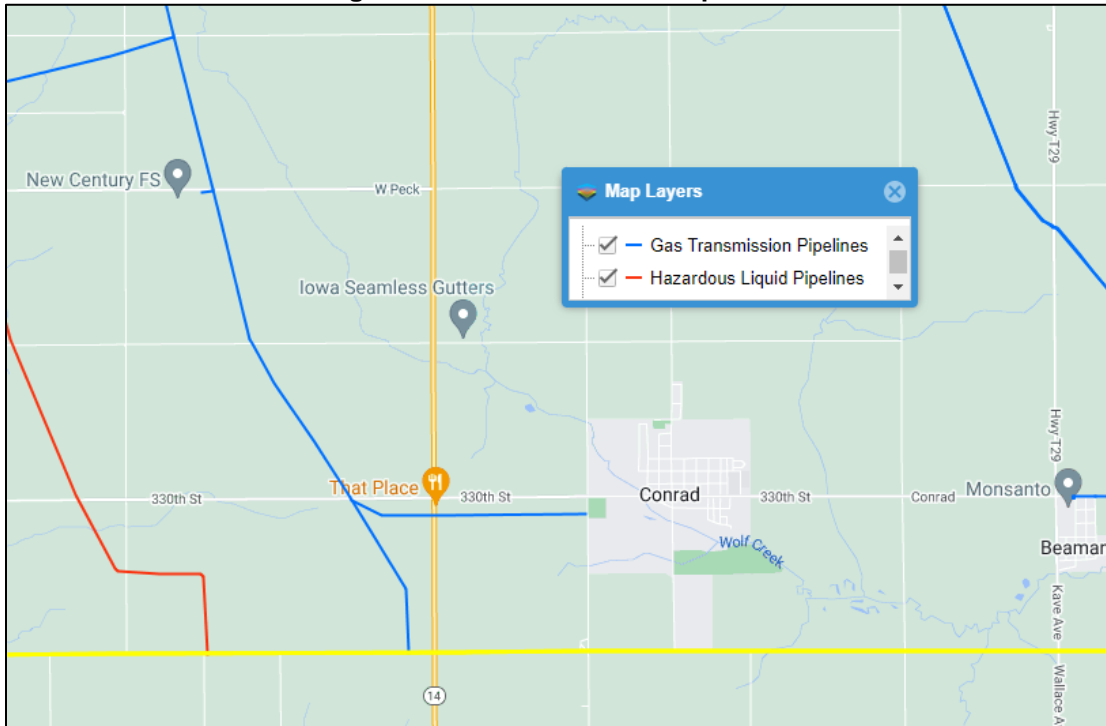
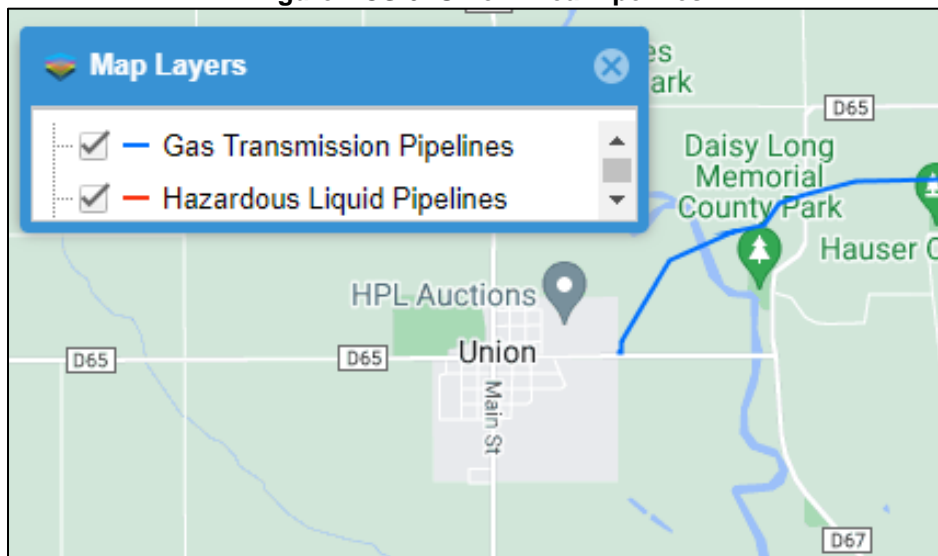


Figure BCS.6: Union Area Pipelines



Source: National Pipeline Mapping System⁷

According to the Tier II System reports submitted to the Iowa Department of Natural Resources, there are eight chemical storage sites within or near Conrad and Union that contain hazardous materials (listed below). No chemical releases have occurred that caused a school to lock down or evacuate.

Table BCS.6: Chemical Storage Lifelines

Facility Name	Address
Conrad CO	108 E Center Street, Conrad
New Century FS Whitten	14314 310th Street, Conrad
Packaging Corp of America	502 Center Street, Conrad
Ritchie Industries, Inc.	120 S Main Street, Conrad
ITC Midwest Conrad	16020 300th Street, Conrad
Nutrien Ag Solutions 1410	16950 330th Street, Conrad
Innovative Ag Services - Union	302 East Street, Union
Union CO	506 Main Street, Union

Source: E-Plan⁸

⁷ National Pipeline Mapping System. 2022. "Public Viewer." Accessed April 2023. <https://pvnpm.phmsa.dot.gov/PublicViewer/>.

⁸ E-Plan – Emergency Response Information System. 2022. "Facility Search." Accessed November 2022. <https://erplan.net/eplan/actions/facilitySearch.htm>.

Hazard Prioritization

The Hardin County Hazard Mitigation Plan evaluates a range of natural and manmade hazards which pose a risk to the county, communities, and other participants. For a review and analysis of identified regional hazards, please see *Section Four: Risk Assessment*. A full list of historical hazard occurrences can be found in the Hardin County jurisdictional profile.

The hazards discussed in detail below were selected by the local planning team from the regional hazard list as the relevant hazards for the jurisdiction. The selected hazards were prioritized by the local planning team based on historical hazard occurrences, potential impacts, and the district's capabilities.

Human Infectious Diseases

The local planning team identified this as a hazard of top concern due to the recent COVID pandemic. A large concern is not being able to fully staff buildings and operation if a large number of staff become ill.

Severe Thunderstorms (includes Lightning & Hail)

This hazard was identified as a top hazard of concern for the school district due to the potential loss of life or injury to staff and students and potential damage to district facilities. The main concerns are the potential safety issues during transportation and the potential loss of power. Loss of power has occurred in the past due to severe thunderstorms. Backup generators are needed to power buildings for the next time a power loss occurs.

Severe Winter Storms

Severe winter storms are a regular part of the climate and weather for the school district. Severe winter storms include blizzards, ice accumulation, heavy snow, and winter storms. These storms can cause power outages during bitterly cold temperatures, road closures, and economic impacts. According to the NCEI, there were 87 winter storm events in Hardin County from 1996 to 2022.

This hazard was identified as a top hazard of concern for the school district due to the potential loss of life or injury to staff and students and potential damage to district facilities. The main concerns are the potential safety issues during transportation and the potential loss of power. The district has had to close school at various times due to severe weather and moved to online or remote learning during those times. Backup generators are needed to power buildings in case of a power outage.

Tornado and Windstorm

This hazard was identified as a top hazard of concern for the school district due to the potential loss of life or injury to staff and students and potential damage to district facilities. The August 2020 derecho damaged bleachers and trees at school buildings. No injuries were reported. Backup generators are needed to power buildings in case of a power outage.

Mitigation Strategy

Completed Mitigation and Strategic Actions

Mitigation Action	Structural Inspections of School Buildings
Description	Hire a consultant to complete a structural study to survey the state of the structures in the school district.
Hazard(s)	Infrastructure Failure
Status	Facilities analysis and master planning with an architect are complete. The district has a facilities-related bond issue going to a vote on Nov. 7, 2023.

Mitigation Action	Emergency Phone Tree
Description	Create an emergency phone tree for all parents and families associated with the school.
Hazard(s)	Animal & Plant Disease, Dam Failure, Drought, Earthquake, Expansive Soils, Extreme Temperature, Flooding, Grass/Wildfire, Hazardous Materials Release, Human Infectious Diseases, Infrastructure Failure, Severe Thunderstorms, Severe Winter Storms, Sinkhole, Terrorism & Civil Unrest, Tornado & Windstorm, Transportation Incident
Status	All parents / guardians can now be communicated with via text, phone call, or email through the school's student management system, JMC.

Continued Mitigation and Strategic Actions

Mitigation Action	Construct a Safe Room in all School Buildings
Description	Construct safe rooms in all school buildings for students and visitors to use during severe weather.
Hazard(s)	Severe Thunderstorms, Severe Winter Storms, Tornado and Windstorm
Estimated Cost	Unknown
Local Funding Source	BCLUW Community School District, CDBG
Timeline	2-5 years
Priority	High
Lead Agency/Department	BCLUW Community School District
Status	Not proceeding due to lack of available federal grant funds.

Mitigation Action	NOAA All-Hazard Radios in all BCLUW Buildings
Description	Secure funding to provide NOAA All-Hazard Radios to all BCLUW school and district buildings.
Hazard(s)	Animal & Plant Disease, Dam Failure, Drought, Earthquake, Expansive Soils, Extreme Temperature, Flooding, Grass/Wildfire, Hazardous Materials Release, Human Infectious Diseases, Infrastructure Failure, Severe Thunderstorms, Severe Winter Storms, Sinkhole, Terrorism & Civil Unrest, Tornado & Windstorm, Transportation Incident
Estimated Cost	\$5,000
Local Funding Source	BCLUW Community School District
Timeline	2-5 years
Priority	High
Lead Agency/Department	BCLUW Community School District
Status	In progress, expected during the 2023-24 school year.

Mitigation Action	Alert Radio System for Schools
Description	Acquire alert system to inform and update school personnel of hazards before and during a hazard event.
Hazard(s)	Animal & Plant Disease, Dam Failure, Drought, Earthquake, Expansive Soils, Extreme Temperature, Flooding, Grass/Wildfire, Hazardous Materials Release, Human Infectious Diseases, Infrastructure Failure, Severe Thunderstorms, Severe Winter Storms, Sinkhole, Terrorism & Civil Unrest, Tornado & Windstorm, Transportation Incident
Estimated Cost	Unknown
Local Funding Source	BCLUW Community School District
Timeline	2-5 years
Priority	High
Lead Agency/Department	BCLUW Community School District
Status	May be part of future construction pending bond issue results.

Mitigation Action	Recruit Storm Spotters and Encourage Storm Spotter Training
Description	Recruit storm spotters and encourage storm spotter training as another warning system.
Hazard(s)	Severe Thunderstorms, Severe Winter Storms, Tornado and Windstorm
Estimated Cost	Staff Time
Local Funding Source	BCLUW Community School District
Timeline	2-5 years
Priority	Medium
Lead Agency/Department	BCLUW Community School District
Status	Not started

Section Seven: BCLUW School District Profile

Mitigation Action	Purchase Generators for District Buildings
Description	Purchase generators for all district buildings.
Hazard(s)	Severe Thunderstorms, Severe Winter Storms, Tornado and Windstorm
Estimated Cost	\$20,000+ per generator
Local Funding Source	BCLUW Community School District
Timeline	2-5 years
Priority	Medium
Lead Agency/Department	BCLUW Community School District
Status	Not started. Contingent on federal funding availability.

Mitigation Action	Emergency Plan/Strategic Plan Of Action For Disasters. Acquire sufficient PPE.
Description	Create an emergency, strategic plan of action for disasters, i.e., determine who opens the shelters, when should the shelters be opened, etc. Acquire sufficient PPE.
Hazard(s)	Dam Failure, Earthquake, Extreme Temperature, Flooding, Grass/Wildfire, Hazardous Materials Release, Human Infectious Diseases, Infrastructure Failure, Severe Thunderstorms, Severe Winter Storms, Sinkhole, Terrorism & Civil Unrest, Tornado & Windstorm, Transportation Incident
Estimated Cost	Unknown
Local Funding Source	BCLUW Community School District
Timeline	2-5 years
Priority	Medium
Lead Agency/Department	BCLUW Community School District
Status	Plan to be updated in 2023-24 school year.

Mitigation Action	Identify Backup Communication Equipment to be Purchased for a Communications Failure between School Buildings
Description	Identify back up communication equipment to be purchased for widespread breakdown or disruption of normal communication system capabilities including loss of or long-term interruption of local government radio facilities and major telephone outages due to mechanical failure, traffic accidents, power failure, line severance, and weather.
Hazard(s)	Dam Failure, Earthquake, Expansive Soils, Extreme Temperature, Flooding, Grass/Wildfire, Hazardous Materials Release, Human Infectious Diseases, Infrastructure Failure, Severe Thunderstorms, Severe Winter Storms, Terrorism & Civil Unrest, Tornado & Windstorm, Transportation Incident
Estimated Cost	Unknown
Local Funding Source	BCLUW Community School District
Timeline	2-5 years
Priority	Medium
Lead Agency/Department	BCLUW Community School District
Status	Not started

Mitigation Action	Public Awareness and Education
Description	Through activities such as outreach projects, distribution of maps, and environmental education, increase student and staff awareness of natural and manmade hazards.
Hazard(s)	Animal & Plant Disease, Dam Failure, Drought, Earthquake, Expansive Soils, Extreme Temperature, Flooding, Grass/Wildfire, Hazardous Materials Release, Human Infectious Diseases, Infrastructure Failure, Severe Thunderstorms, Severe Winter Storms, Sinkhole, Terrorism & Civil Unrest, Tornado & Windstorm, Transportation Incident
Estimated Cost	Staff Time
Local Funding Source	BCLUW Community School District
Timeline	2-5 years
Priority	Medium
Lead Agency/Department	BCLUW Community School District
Status	In progress

Plan Maintenance

Hazard Mitigation Plans should be living documents and updated regularly to reflect changes in hazard events, priorities, and mitigation actions. These updates are encouraged to occur after every major disaster event, alongside planning documents (e.g., annual budgets, etc.), during the fall before the HMA grant cycle begins, and/or prior to other funding opportunity cycles begin.

The local planning team is responsible for reviewing and updating this profile as changes occur or after a major event. The local planning team will include the Superintendent and Principals. The plan will be reviewed annually. The district will involve students, staff, and parents in the plan review and revision process through website updates.

This Page Is Intentionally Blank

College Profile

Ellsworth Community College

**Hardin County
Hazard Mitigation Plan 2023**

Local Planning Team

Table ECC.1: Ellsworth Community College Planning Team

Name	Title	Jurisdiction	Meeting Attendance
Barb Klein	Provost	Ellsworth Community College	Round 1
Dave Henry	Plant Services	Ellsworth Community College	-
Mike Emerson	Campus Security	Ellsworth Community College	-

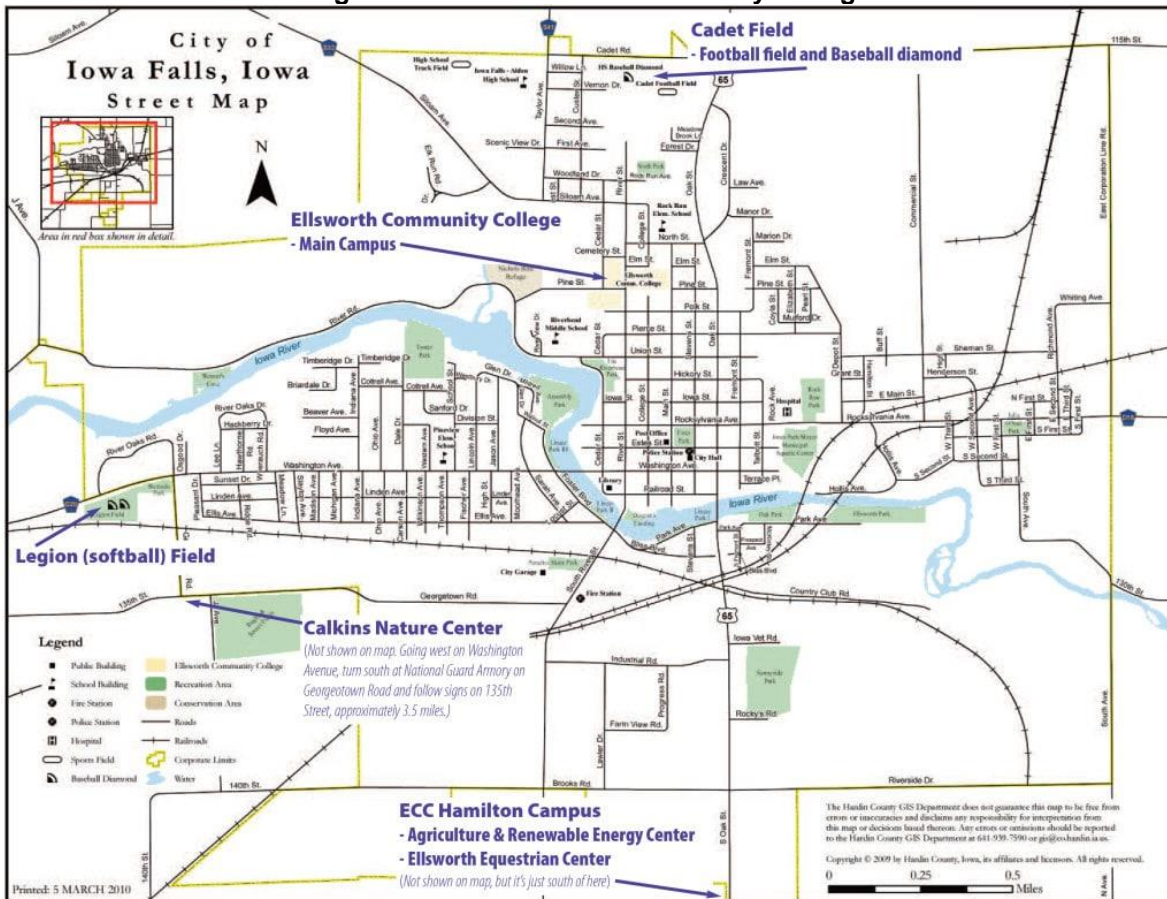
Location and Geography

Ellsworth Community College (ECC) is located in Iowa Falls, Iowa and is part of the Iowa Valley Community College District. The college is made up of the Main Campus and the Hamilton Campus. The Hamilton Campus is located on the southern edge of Iowa Falls and houses the Agriculture & Renewable Energy Center and the Ellsworth Equestrian Center.

Demographics

Ellsworth Community College has approximately 800 students enrolled, 75% of which are full-time. There are about 40 international students that attend ECC. Approximately 100 people are employed by the college.

Figure ECC.1: Ellsworth Community College



Housing

ECC has both dormitory and apartment style housing on campus. Thompson Hall and Wall Hall are dormitory, and Lloyd Hall, College Apartments, and College Suites are all three-apartment style. Approximately 340 students live on campus.

Governance

Ellsworth Community College is a unit of the Iowa Valley Community College District. The district is governed by a ten-member board of supervisors and a president. Each community college is led by a provost.

The following offices, departments, or services may be involved in implementing hazard mitigation initiatives:

- Information Technology Services
- Maintenance
- Provost’s Office
- Residence Life
- Safety Committee
- Security

Capability Assessment

Due to the unique structure of the college, the typical capability assessment table was not used. The following table summarizes the college’s overall capabilities. Simpson College will continue to utilize existing relationships with local, county, state, and federal agencies to aid in the implementation of mitigation projects.

Table ECC.2: Overall Capability

Overall Capability	Limited/Moderate/High
Financial resources needed to implement mitigation projects	Moderate
Staff/expertise to implement projects	Moderate
Public support to implement projects	Moderate
Time to devote to hazard mitigation	Moderate
Ability to expand and improve identified capabilities to achieve mitigation	Moderate

Plan Integration

Grants and Funding

The local planning team indicated that college funds are typically limited to maintaining current facilities and systems. Pursual of capital projects requires the passage of a bond issue. The college passed the IVCCD bond issue in November 2019 which provided funding to build Lloyd Residence Hall and remodel the Dittmer pool area to be retooled to a turf workout area. The bond

Section Seven: Ellsworth Community College Profile

issue also provided funding for the remodel of Thompson Hall to add air conditioning and rework bathrooms, add new doors, carpet, etc. Funds have seen an uptick since the passage of the bond in 2019; however, once those projects wrap up in the next six months, the budget will be limited to yearly operational costs.

Incident Command Plan

The college uses an Incident Command Plan to react to hazardous events. The Incident Command Plan discusses natural hazards such as tornadoes, addresses shelter in place protocols, identifies scenarios requiring evacuation and critical evacuation routes, and identifies sheltering locations. In a future update, the college intends to identify opportunities for mitigation following an event. The plan is currently being updated.

Future Development Trends

In recent years ECC has remodeled the Math/Science Building and added Lloyd Residence Hall. Thompson Hall is currently being remodeled. The college plans to demolish Wall Hall when Thompson hall is finished. ECC is adding a welding program to open Fall 2023 for high school students in the Trades & Industries Building.

Community Lifelines

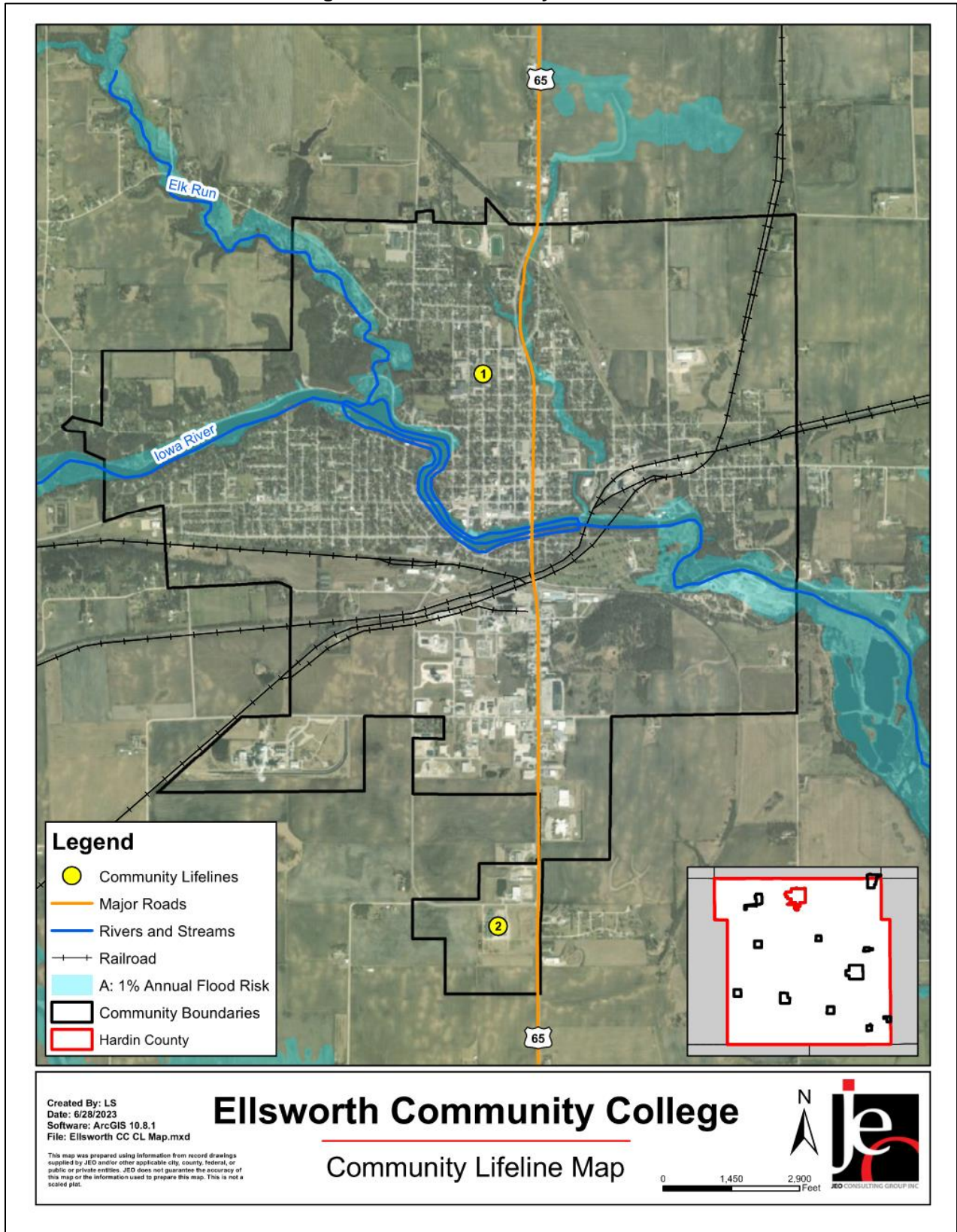
Each participating jurisdiction identified community lifelines that are vital for disaster response and essential for returning the jurisdiction's functions to normal during and after a disaster per the FEMA Community Lifelines guidance. The FEMA-recognized lifelines include: Safety and Security; Food, Water, and Shelter; Health and Medical; Energy; Communication; Transportation; and Hazardous Material facilities.



Table ECC.3: Community Lifelines

CL#	Name	Lifeline Type	Generator (G) Shelter (S)	Floodplain (Y/N)
1	ECC - Main Campus	Safety and Security	S (gyms)	N
2	ECC - Hamilton Campus	Safety and Security	-	N

Figure ECC.4: Community Lifelines

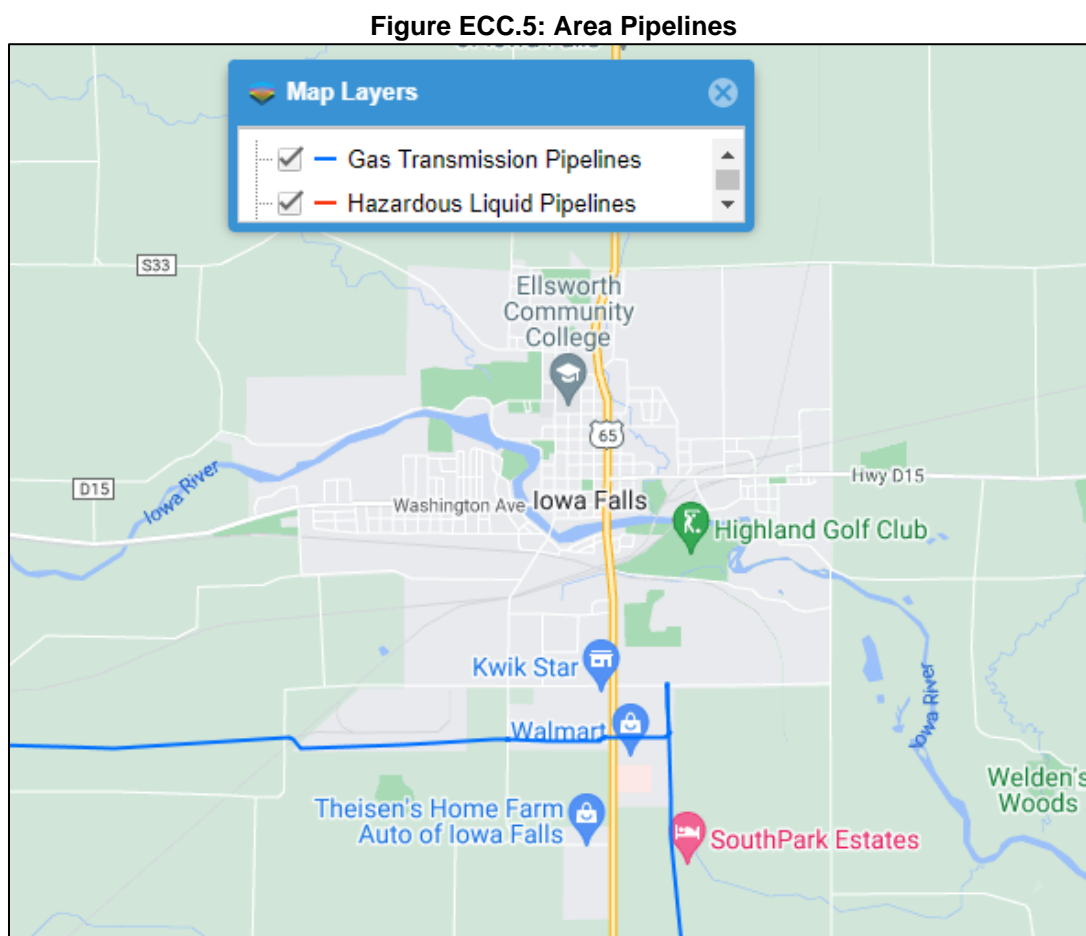


Transportation

Major transportation corridors that travel near Ellsworth Community College include US Highway 65, S41, S33, D20, D15, and Ellsworth Avenue. Additionally, a Union Pacific rail line and Canadian National rail line that travel nearby. Transportation information is important to hazard mitigation plans because it suggests possible evacuation corridors in the college, as well as areas more at risk of transportation incidents.

Hazardous Materials

The Hazardous Materials Lifeline includes chemical storage facilities, pipelines, and transported chemical tanks. There are two gas transmission pipelines that travel near Ellsworth Community College. These can be seen in Figure ECC.5.



Source: National Pipeline Mapping System⁹

According to the Tier II System reports submitted to the Iowa Department of Natural Resources, there are ten chemical storage sites within or near Ellsworth Community College that contain hazardous materials (listed in Table ECC.4).

⁹ National Pipeline Mapping System. 2022. "Public Viewer." Accessed April 2023. <https://pvnpm.phmsa.dot.gov/PublicViewer/>.

Table ECC.4: Chemical Storage Lifelines

Facility Name	Address
Animal Health International	1500 Riverside Drive, Iowa Falls
Cargill Inc	602 Industrial Road, Iowa Falls
CenturyLink - Iowa Falls CO	403 Estes Street, Iowa Falls
Concrete Inc--Iowa Falls	1033 Westview Drive, Iowa Falls
Forterra Concrete Products Inc - Iowa Falls	540 E Country Club Road, Iowa Falls
Iowa DOT Iowa Falls Maintenance Garage	1035 Industrial Park, Iowa Falls
Iowa Falls - Midwest Custom Ag Aviation	16041 Highway 65, Iowa Falls
ITC Midwest Iowa Falls Industrial	703 Industrial Park Road, Iowa Falls
POET Biorefining - Iowa Falls, LLC	21050 140th Street, Iowa Falls
Winfield United - Iowa Falls	1120 Commercial Street, Iowa Falls

Source: E-Plan¹⁰

Historical Occurrences

See the community profile for the City of Iowa Falls for historical hazard events.

Hazard Prioritization

The Hardin County Hazard Mitigation Plan evaluates a range of natural and manmade hazards which pose a risk to the county, communities, and other participants. For a review and analysis of identified regional hazards, please see *Section Four: Risk Assessment*. A full list of historical hazard occurrences can be found in the Hardin County jurisdictional profile.

The hazards discussed in detail below were selected by the local planning team from the regional hazard list as the relevant hazards for the jurisdiction. The selected hazards were prioritized by the local planning team based on historical hazard occurrences, potential impacts, and the college’s capabilities.

Hazardous Materials Release

The local planning team identified this as a hazard of top concern primarily due to the campus science lab that contains various chemicals that could be flammable, toxic, etc. Chemicals are kept in proper containers to avoid unnecessary risk. The college also disposed of some chemicals that are no longer used in recent years.

Human Infectious Diseases

Since COVID, the college has been very aware of infectious diseases, especially with on-campus housing. No major incidents have occurred in the past.

Tornado and Windstorm

Shelter during a tornado or windstorm is a concern with on-campus housing. Tornadoes and Windstorms have the potential for significant damage, economic impacts, and loss of life. Windstorms are common across the county and can cause property and tree damage and brief power outages. Tornadoes are much less common, but the impacts can be far greater. Between 1996 and 2022, the NCEI recorded 38 high wind events in Hardin County and four tornadoes in

10 E-Plan – Emergency Response Information System. 2022. "Facility Search." Accessed November 2022. <https://erplan.net/eplan/actions/facilitySearch.htm>.

Iowa Falls. The largest was an EF1, which occurred on December 15, 2021, and caused \$25,000 in property damage in the city. No injuries or deaths were reported.

Mitigation Strategy

New Mitigation and Strategic Actions

Mitigation Action	Update Policies for Disaster Preparedness
Description	Update current policies and processes related to disaster preparedness and response.
Hazard(s)	Animal & Plant Disease, Dam Failure, Earthquake, Extreme Temperature, Flooding, Grass/Wildfire, Hazardous Materials Release, Human Infectious Diseases, Infrastructure Failure, Severe Thunderstorms, Severe Winter Storms, Sinkhole, Terrorism & Civil Unrest, Tornado & Windstorm, Transportation Incident
Estimated Cost	Staff Time
Local Funding Source	General Fund
Timeline	1-2 years
Priority	Medium
Lead Agency/Department	Administration
Status	Current policies and processes related to disaster preparedness are being followed and continuously updated to ensure students, staff and faculty are aware and prepared.

Mitigation Action	Identify Emergency Shelter Locations/ Build New Shelter for Campus Housing
Description	Identify and/or build emergency/storm shelter locations across campus. Build a shelter/safe room for campus housing.
Hazard(s)	Dam Failure, Earthquake, Extreme Temperature, Flooding, Grass/Wildfire, Hazardous Materials Release, Human Infectious Diseases, Severe Thunderstorms, Severe Winter Storms, Terrorism & Civil Unrest, Tornado & Windstorm, Transportation Incident
Estimated Cost	\$350,000+
Local Funding Source	General Fund
Timeline	5+ years
Priority	Medium
Lead Agency/Department	Administration
Status	Not started

Mitigation Action	Public Awareness and Education
Description	Through activities such as outreach projects, distribution of maps, and environmental education, increase student and staff awareness of natural and manmade hazards.
Hazard(s)	Animal & Plant Disease, Dam Failure, Drought, Earthquake, Expansive Soils, Extreme Temperature, Flooding, Grass/Wildfire, Hazardous Materials Release, Human Infectious Diseases, Infrastructure Failure, Severe Thunderstorms, Severe Winter Storms, Sinkhole, Terrorism & Civil Unrest, Tornado & Windstorm, Transportation Incident
Estimated Cost	Staff Time
Local Funding Source	General Fund
Timeline	5+ years
Priority	Low
Lead Agency/Department	Administration
Status	Not started

Plan Maintenance

Hazard Mitigation Plans should be living documents and updated regularly to reflect changes in hazard events, priorities, and mitigation actions. These updates are encouraged to occur after every major disaster event, alongside planning documents (e.g., annual budgets, etc.), during the fall before the HMA grant cycle begins, and/or prior to other funding opportunity cycles begin.

The local planning team is responsible for reviewing and updating this profile as changes occur or after a major event. The local planning team will include the Provost, Plant Services Supervisor, and Dean of Student Affairs. The plan will be reviewed annually. The district will involve students and staff in the plan review and revision process through website and handbook updates.

This Page Is Intentionally Blank

School District Profile

Iowa Falls-Alden Community Schools

Hardin County
Hazard Mitigation Plan 2023

Local Planning Team

Table IFA.1: Iowa Falls-Alden Schools Local Planning Team

Name	Title	Jurisdiction	Meeting Attendance
Tony Neumann	Superintendent	Iowa Falls CSD, Alden CSD	Video Recordings

Location and Services

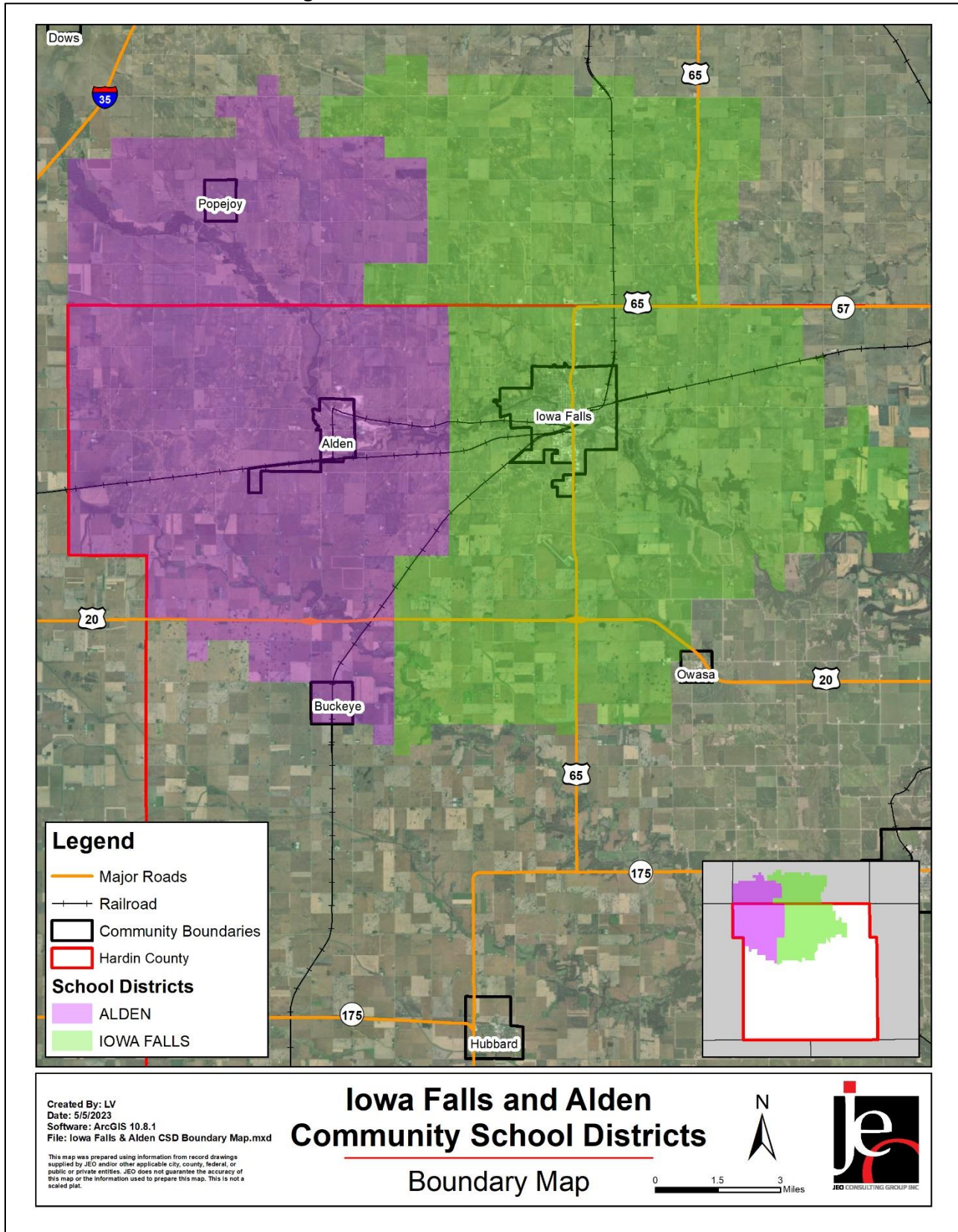
The Iowa Falls and Alden Community School Districts (IFA) are located in northern Hardin County and southern Franklin County. The two districts have a whole grade sharing agreement in which all 6th grade students attend school in Alden and all 7th-12th grade students attend school in Iowa Falls. IFA is comprised of six schools: Iowa Falls-Alden High School, Riverbend Middle School, Alden Elementary, Pineview Elementary, Rock Run Elementary, and Greenbelt Alternative School. The district offices are located in Iowa Falls and Alden. According to the local planning team, the district has students who open-enroll from AGWSR, Eldora-New Providence, Hubbard-Radcliffe, Hampton-Dumont, Cal, BCLUW, Clarion-Goldfield-Dows, and Webster City school districts. Besides English, Spanish is also spoken in IFA.

Demographics

Figures IFA.2 and IFA.3 display the historical student population trend starting with the 2005-06 school year and ending with the 2022-2023 year. These figures indicate that the student population saw a sharp decrease around 2018 but has since leveled off. There are 1,278 students enrolled in the Iowa Falls Community School District (CSD) and 159 enrolled in the Alden CSD.¹¹ The planning team indicated that the student population is anticipated to decrease over the next five years. Incoming classes have been smaller than graduating classes in recent years.

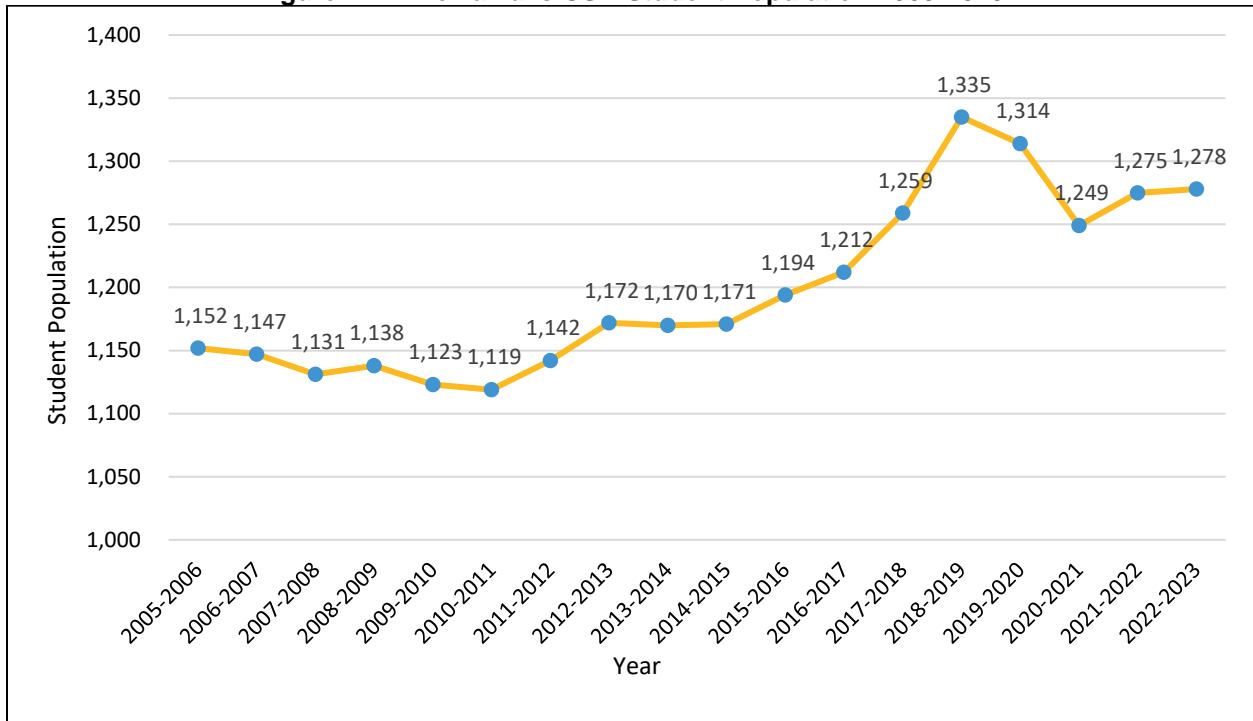
¹¹ Iowa Department of Education. "Iowa Public School District PreK-12 Enrollments by District, Grade, Race and Gender." Accessed May 2023. <https://educateiowa.gov/data-reporting/education-statistics-pk-12>.

Figure IFA.1: Iowa Falls-Alden Schools



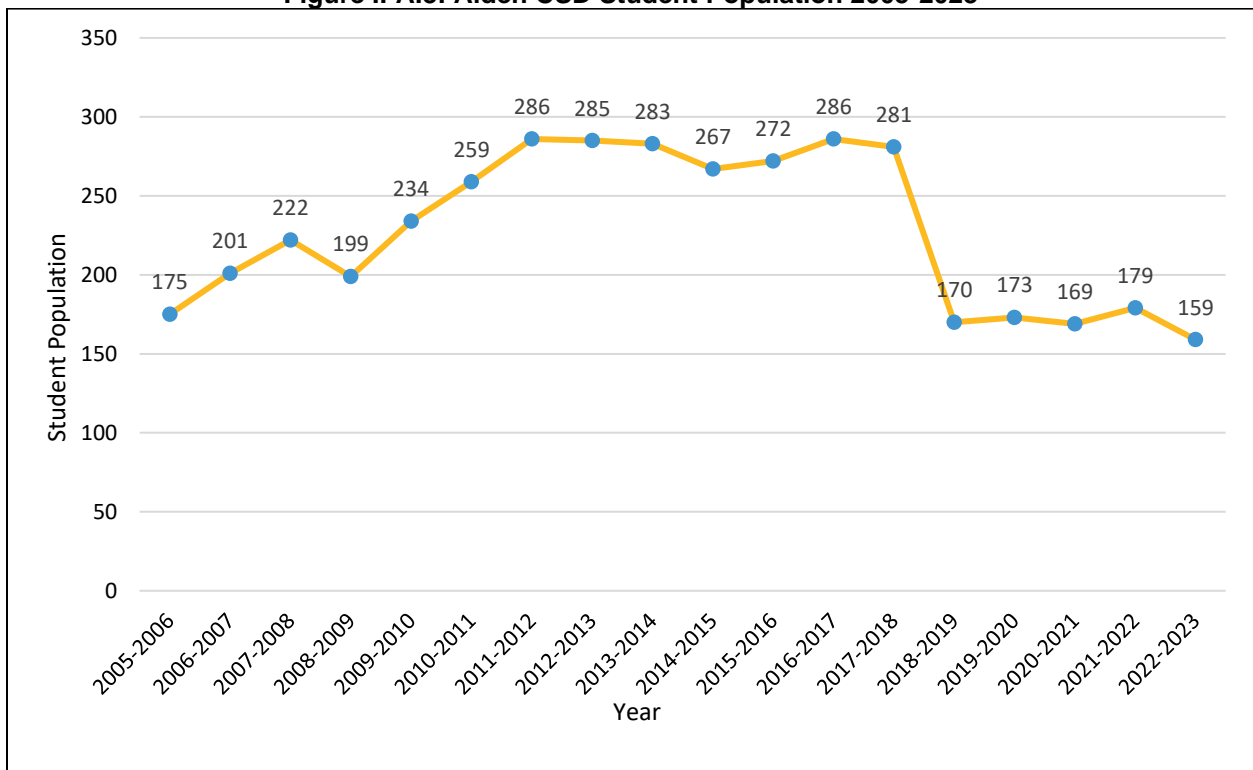
Section Seven: Iowa Falls-Alden Schools Profile

Figure IFA.2: Iowa Falls CSD Student Population 2005-2023



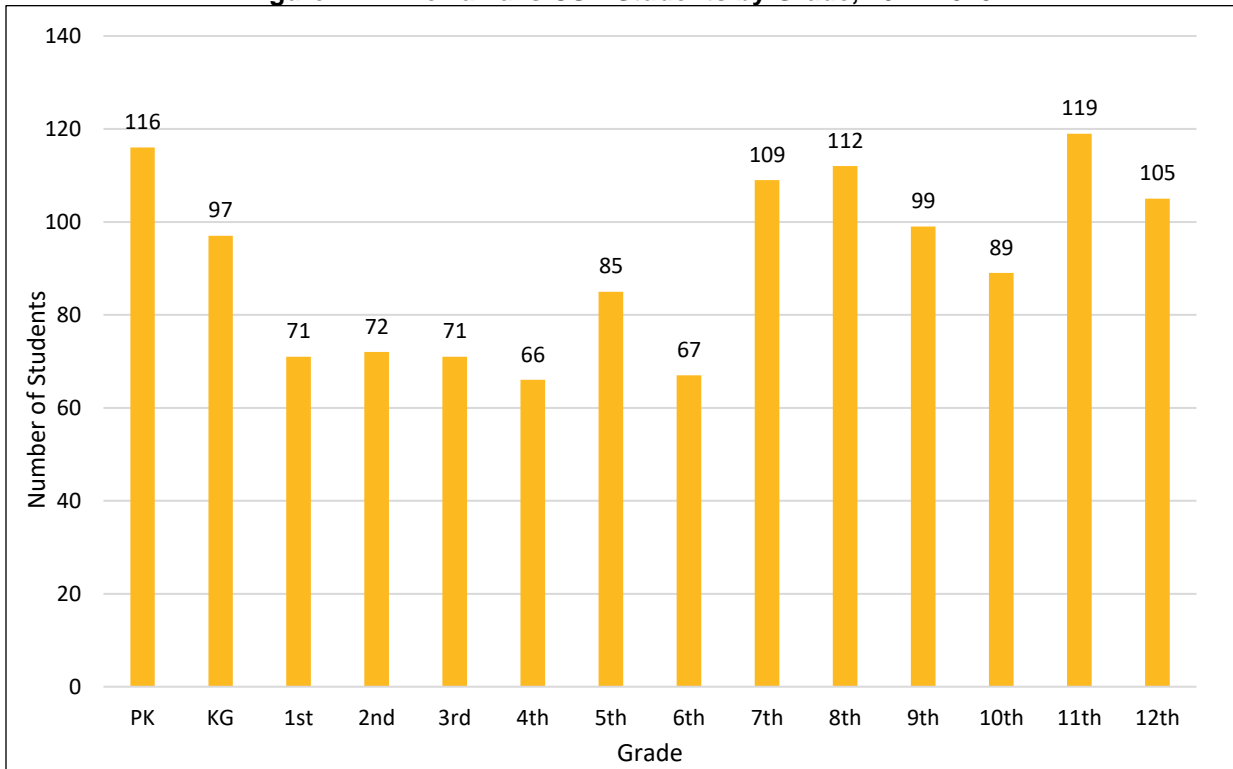
Source: Iowa Department of Education

Figure IFA.3: Alden CSD Student Population 2005-2023



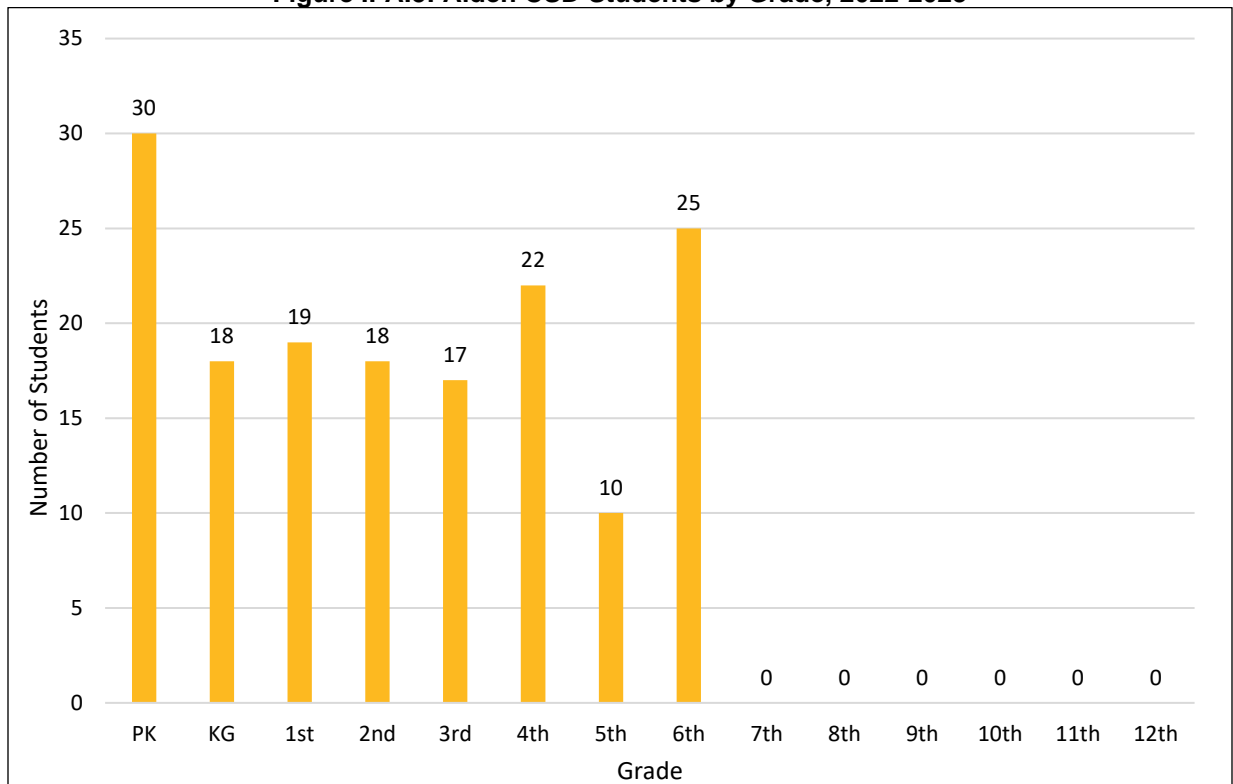
Source: Iowa Department of Education

Figure IFA.4: Iowa Falls CSD Students by Grade, 2022-2023



Source: Iowa Department of Education

Figure IFA.5: Alden CSD Students by Grade, 2022-2023



Source: Iowa Department of Education

Section Seven: Iowa Falls-Alden Schools Profile

Figures IFA.4 and IFA.5 indicate that the largest number of students (when combining districts) are in Pre-Kindergarten, Kindergarten, and 11th grades. The lowest number of students are in 3rd, 4th, and 10th grades. According to the Iowa Department of Education, 40% of students receive either free or reduced priced meals at school. This is lower than the state average of 42.3%. Additionally, 13.3% of students are in the Special Education Program and 3.1% of students are English Language Learners. These particular students may be more vulnerable during a hazardous event than the rest of the student population.

Table IFA.2: K-12 Student Statistics, 2022-2023

	Iowa Falls CSD	Alden CSD	State of Iowa
Free/Reduced Priced Meals	40.1%	39.5%	42.3%
Special Education Students*	13.2%	14.0%	13.2%
English Language Learners (ESL)	2.8%	6.2%	6.9%

Source: Iowa Department of Education¹²

*Special education student enrollment data currently only available for 2021-2022.

Administration and Staff

Iowa Falls-Alden Schools (IFA) has a superintendent, five principals, and supportive staff. The school board is made up of a five-member panel. Iowa Falls-Alden Schools also has a number of additional departments and staff that may be available to implement hazard mitigation initiatives. IFA trains its staff about emergency procedures by reviewing building emergency plans and procedures on an annual basis. Each building is also required to practice a predetermined amount of fire, tornado, and evacuation drills each year. The district is looking to do an active shooter drill as well. IFA employs about 250 people, not including coaches.

Capability Assessment

The capability assessment consisted of a review of local existing policies, regulations, plans, and programs with hazard mitigation capabilities. The following tables summarize the district's planning and regulatory capability; administrative and technical capability; fiscal capability; educational and outreach capability; and overall capability to implement mitigation projects.

Iowa Falls-Alden Schools educates students and families about emergency procedures through safety reminders throughout the year. Students are involved in regular fire, tornado, and evacuation drills. Signs are posted in each room for the safest/planned route to exit in the event of a fire, tornado, or evacuation. Emergency notifications are sent to parents and staff about emergency events through the GovDelivery communication system. This provides a text message and email notification to all individuals who have signed up for the service. The process for signing up is shared multiple times throughout the school year.

IFA partners with the local fire department for Fire Prevention Week and the police department has performed walk-throughs of the school buildings to become familiar with the setup. IFA was a part of the facility vulnerability assessment from the State of Iowa and has conducted several trainings in various buildings over the years.

¹² Iowa Department of Education. "Student Demographic Information." Accessed May 2023. <https://educateiowa.gov/data-reporting/education-statistics-pk-12>

Table IFA.3: Capability Assessment

Capability/Planning Mechanism		Yes/No
Planning Capability	Facility Improvements Plan	Developing
	Continuity of Operations Plan	Yes
	Crisis Response Plan	Yes
	Strategic Plan	Yes
	Other (if any)	
Administration & Technical Capability	Grant Manager	No
	Mutual Aid Agreement	No
	Other (if any)	
Fiscal Capability	Applied for grants in the past	Yes
	Awarded grants in the past	Yes
	Authority to levy taxes for specific purposes such as mitigation projects	With voter approval
	General Obligation Revenue or Special Tax Bonds	No
	Approved bonds in the past	Yes
	Flood Insurance	No
	Other (if any)	
Education & Outreach Capability	Local school groups or non-profit organizations focused on environmental protection, emergency preparedness, access, and functional needs populations, etc. (Ex. Parent groups, Crisis Response Teams, etc.)	Yes
	Hazard education or information program	Yes
	StormReady Certification	No
	Other (if any)	
Drills	Fire	4 / year
	Tornado	4 / year
	Intruder	0 / year
	Bus evacuation	1 / year
	Evacuation	1 / year
	Other (if any)	

Table IFA.4: Overall Capability

Overall Capability	Limited/Moderate/High
Financial resources needed to implement mitigation projects	Limited
Staff/expertise to implement projects	Limited
Public support to implement projects	Moderate
Time to devote to hazard mitigation	Limited
Ability to expand and improve identified capabilities to achieve mitigation	Moderate

Plan Integration

Grants and Funding

The local planning team indicated that district funds are somewhat limited to maintaining current facilities and systems. Needed updates would cost hundreds of thousands to millions of dollars, which is not in the budget. Those updates would require community approval for a GO Bond or borrowing against future funds. A large portion of the budget is allocated to the upkeep and purchase of new vehicles, facility upgrades, etc. The amount of district funds for capital projects has increased slightly in recent years. Funds have remained about the same over recent years. The district has not applied for any grants in the last five years.

Crisis Response Plan

The school district uses a Crisis Response Plan to react to hazardous events. The Crisis Response Plan discusses natural hazards, addresses shelter in place protocols, identifies scenarios requiring evacuation and critical evacuation routes, identifies sheltering locations, and identifies opportunities for mitigation following an event. In a future update, the district plans to identify any gaps related to hazards. The plan is reviewed annually.

Future Development Trends

In the last five years the district has remodeled classrooms, added air conditioning to one building, and a team shed was built at Cadet Field. There are no current plans for new construction/renovation and any project would depend on a community vote. IFA is currently working to develop a Facility Master Plan and need community input for the next phase.

Community Lifelines

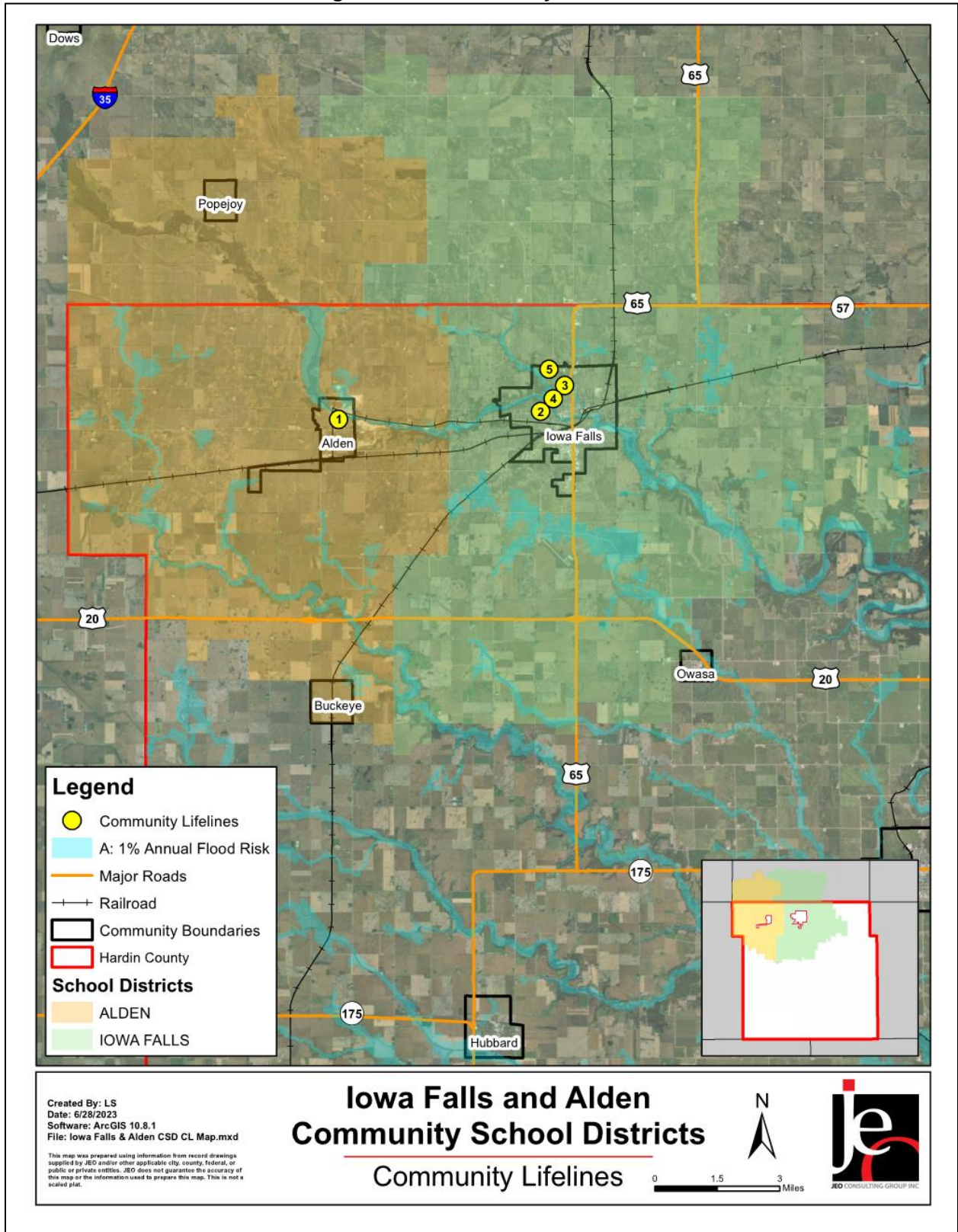
Each participating jurisdiction identified community lifelines that are vital for disaster response and essential for returning the jurisdiction’s functions to normal during and after a disaster per the FEMA Community Lifelines guidance. The FEMA-recognized lifelines include: Safety and Security; Food, Water, and Shelter; Health and Medical; Energy; Communication; Transportation; and Hazardous Material facilities.



Table IFA.5: Community Lifelines

CL#	Name	Lifeline Type	Generator (G) Shelter (S)	Floodplain (Y/N)
1	Alden Elementary	Other	S	-
2	Pineview Elementary	Other	S	-
3	Rock Run Elementary	Other	S	-
4	Riverbend Middle School	Other	S	-
5	Iowa Falls - Alden High School	Other	S	-

Figure IFA.6: Community Lifelines



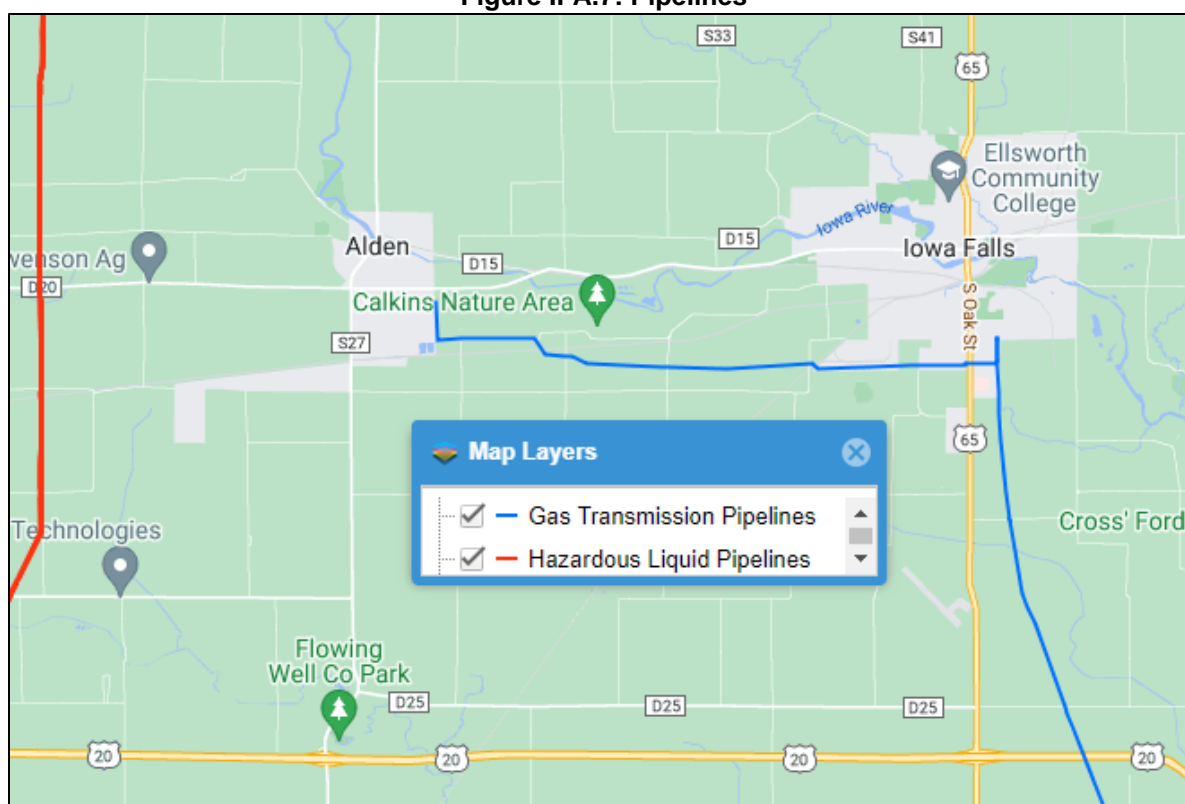
Transportation

The planning team expressed concern with a Level B road in Alden and some gravel roads in Iowa Falls. The gravel roads are in poor condition depending on the weather/season. No transportation accidents were reported to have greatly impacted the district; however, it has been a problem in the past when a bus is taken out of service for repairs. The Iowa Falls CSD has ten buses which transport more than 210 students. The Alden CSD has three buses and transports about 70 students.

Hazardous Materials

The Hazardous Materials Lifeline includes chemical storage facilities, pipelines, and transported chemical tanks. There are multiple pipelines that travel near Iowa Falls-Alden Schools. These can be seen in Figure IFA.7.

Figure IFA.7: Pipelines



Source: National Pipeline Mapping System¹³

According to the Tier II System reports submitted to the Iowa Department of Natural Resources, there are 15 chemical storage sites within or near Iowa Falls and Alden that contain hazardous materials (listed in Table IFA.6). No chemical releases have occurred that caused a school to lock down or evacuate.

13 National Pipeline Mapping System. 2022. "Public Viewer." Accessed April 2023. <https://pvnpmms.phmsa.dot.gov/PublicViewer/>.

Table IFA.6: Chemical Storage Lifelines

Facility Name	Address
AgVantage FS, A Division of Growmark, Inc. - Alden	13730 County Road S27, Alden
Innovative Ag Services - Alden	13600 County Road S27, Alden
Iowa Limestone Company Resources	800 River Drive , Alden
Mathy Construction Co. Plant 92	17487 County Road D20, Alden
MCI- ALDEIA (VZB- IAALDEIA)	12979 140th St, Alden
Animal Health International	1500 Riverside Drive, Iowa Falls
Cargill Inc	602 Industrial Road, Iowa Falls
CenturyLink - Iowa Falls CO	403 Estes Street, Iowa Falls
Concrete Inc--Iowa Falls	1033 Westview Drive, Iowa Falls
Forterra Concrete Products Inc - Iowa Falls	540 E Country Club Road, Iowa Falls
Iowa DOT Iowa Falls Maintenance Garage	1035 Industrial Park, Iowa Falls
Iowa Falls	16041 Highway 65, Iowa Falls
ITC Midwest Iowa Falls Industrial	703 Industrial Park Road, Iowa Falls
POET Biorefining - Iowa Falls, LLC	21050 140th Street, Iowa Falls
Winfield United - Iowa Falls	1120 Commercial Street, Iowa Falls

Source: E-Plan¹⁴

Hazard Prioritization

The Hardin County Hazard Mitigation Plan evaluates a range of natural and manmade hazards which pose a risk to the county, communities, and other participants. For a review and analysis of identified regional hazards, please see *Section Four: Risk Assessment*. A full list of historical hazard occurrences can be found in the Hardin County jurisdictional profile.

The hazards discussed in detail below were selected by the local planning team from the regional hazard list as the relevant hazards for the jurisdiction. The selected hazards were prioritized by the local planning team based on historical hazard occurrences, potential impacts, and the district's capabilities.

Extreme Temperatures

The local planning team identified this hazard due to the concern for the safety of student and staff safety. There have been multiple extreme hot and cold days over the years. Pineview Elementary has air conditioning to help one building but it is needed at all buildings in the jurisdiction.

Infrastructure Failure

The main concern related to this hazard is the negative impact to the safety and security of students as well as the impact on education. Past infrastructure incidents include a heating system failure at Pineview in April 2021. Without heat to the building, the school was unable to hold classes. IFA also say internet outages at various times over the years. These outages have resulted in loss of access the most of its security systems (phones, cameras, door buzzers, etc.). Outages also limited educational capacity as much of operations and learning is dependent on technology. Impacts would be more pronounced if an outage lasted multiple days.

14 E-Plan – Emergency Response Information System. 2022. "Facility Search." Accessed November 2022. <https://erplan.net/eplan/actions/facilitySearch.htm>.

Section Seven: Iowa Falls-Alden Schools Profile

To reduce IFA's risk to this hazard, the district replaced the heating system at Pineview and now take as many precautions as possible to protect the network. HVAC upgrades are needed at four other buildings.

Severe Thunderstorms (includes Hail & Lightning)

This hazard was identified as a top hazard of concern for the school district due to the potential for lightning strikes knocking out power to the network. Multiple events have occurred over the years that knocked out power. A July 2019 lightning strike took down the Pineview Elementary network for multiple days. The district has purchased backup technology items as needed. The planning team indicated that backup generators could be helpful in the event of a power outage; however, it is not considered a critical need at this time.

Severe Winter Storms

Severe winter storms are a regular part of the climate and weather for the school district. Severe winter storms include blizzards, ice accumulation, heavy snow, and winter storms. These storms can cause power outages during bitterly cold temperatures, road closures, and economic impacts. According to the NCEI, there were 87 winter storm events in Hardin County from 1996 to 2022.

The planning team identified this as a hazard of top concern due to the potential for transportation disruption and loss of service to students. There are multiple storms each year in which school must be delayed or canceled.

Tornado and Windstorm

This was selected as a top hazard due to the potential for catastrophic damage. If schools were hit by a tornado or derecho, it would be hard to accommodate the educational needs for all students if one or more buildings were rendered unusable from storm damage. No buildings currently have FEMA-certified safe rooms.

Mitigation Strategy

Continued Mitigation and Strategic Actions

Iowa Falls Community School District:

Mitigation Action	Protection of Damage to Boiler and Heat/Ventilation Control System
Description	Elevate and/or relocate the boiler and heat/ventilation control system at Rock Run School. The boilers and controls are currently located in the basements of the school buildings.
Hazard(s)	Extreme Temperatures, Infrastructure Failure
Estimated Cost	\$2,000,000
Local Funding Source	Iowa Falls Community School District
Timeline	2-5 years
Priority	Medium
Lead Agency/Department	Iowa Falls Community School District
Status	Pineview has a new system and no longer uses the basement boiler. Rock Run has had no change.

Mitigation Action	Active Shooter Containment
Description	Find and install a device to every classroom door that would prevent an active shooter from bursting through the door and harming the people in the classroom.
Hazard(s)	Terrorism and Civil Unrest
Estimated Cost	\$150 per unit
Local Funding Source	Iowa Falls Community School District
Timeline	2-5 years
Priority	Medium
Lead Agency/Department	Iowa Falls Community School District
Status	The fire marshal has not yet approved such units.

Mitigation Action	Purchase Updated Snow Removal Equipment
Description	Purchase/update snow removal equipment for use following a severe winter storm
Hazard(s)	Severe Winter Storms, Transportation Incident
Estimated Cost	\$80,000 (\$20,000 per school building)
Local Funding Source	Iowa Falls Community School District
Timeline	2-5 years
Priority	Medium
Lead Agency/Department	Iowa Falls Community School District
Status	A vehicle has been purchased for the HS, no other larger vehicles for the other buildings have been purchased.

Section Seven: Iowa Falls-Alden Schools Profile

Mitigation Action	Air Conditioning
Description	Add air conditioning to school buildings for year-round use
Hazard(s)	Extreme Temperatures
Estimated Cost	\$12,000,000
Local Funding Source	Iowa Falls Community School District
Timeline	2-5 years
Priority	Medium
Lead Agency/Department	Iowa Falls Community School District
Status	Pineview has AC, no other building has AC.

Mitigation Action	Construct a Safe Room in all School Buildings
Description	Build a safe room for students, staff, and visitors in the Iowa Falls Schools. Architect plans developed and approved for construction if funding ever becomes available.
Hazard(s)	Severe Thunderstorms, Severe Winter Storms, Tornado and Windstorm
Estimated Cost	\$5 million per school
Local Funding Source	Iowa Falls Community School District
Timeline	2-5 years
Priority	Medium
Lead Agency/Department	Iowa Falls Community School District
Status	Not started

Mitigation Action	Public Awareness and Education
Description	Through activities such as outreach projects, distribution of maps, and environmental education, increase student and staff awareness of natural and manmade hazards.
Hazard(s)	Animal & Plant Disease, Dam Failure, Drought, Earthquake, Expansive Soils, Extreme Temperature, Flooding, Grass/Wildfire, Hazardous Materials Release, Human Infectious Diseases, Infrastructure Failure, Severe Thunderstorms, Severe Winter Storms, Sinkhole, Terrorism & Civil Unrest, Tornado & Windstorm, Transportation Incident
Estimated Cost	Staff Time
Local Funding Source	Iowa Falls Community School District
Timeline	2-5 years
Priority	Medium
Lead Agency/Department	Iowa Falls Community School District
Status	In progress

Alden Community School District:

Mitigation Action	Protection of Damage to Boiler and Heat/Ventilation Control System
Description	Elevate and/or relocate the boiler and heat/ventilation control system at Alden Community Schools, as applicable.
Hazard(s)	Extreme Temperatures, Infrastructure Failure
Estimated Cost	\$1,000,000
Local Funding Source	Alden Community School District
Timeline	2-5 years
Priority	Medium
Lead Agency/Department	Alden Community School District
Status	Not started

Mitigation Action	Active Shooter Containment
Description	Find and install a device to every classroom door that would prevent an active shooter from bursting through the door and harming the people in the classroom.
Hazard(s)	Terrorism and Civil Unrest
Estimated Cost	\$150+ per unit
Local Funding Source	Alden Community School District
Timeline	5+ years
Priority	Medium
Lead Agency/Department	Alden Community School District
Status	The fire marshal has not yet approved such units.

Mitigation Action	Install Air Conditioning in School Building
Description	Add air conditioning to elementary school building for year-round use.
Hazard(s)	Extreme Temperatures
Estimated Cost	\$3,000,000
Local Funding Source	Alden Community School District
Timeline	2-5 years
Priority	Medium
Lead Agency/Department	Alden Community School District
Status	Not started

Mitigation Action	Construct Safe Room in School Buildings
Description	Build a safe room for students, staff, and community members in the elementary school.
Hazard(s)	Severe Thunderstorms, Severe Winter Storms, Tornado and Windstorm
Estimated Cost	\$5,000,000
Local Funding Source	Alden Community School District, CDBG
Timeline	2-5 years
Priority	Medium
Lead Agency/Department	Alden Community School District
Status	Not started

Mitigation Action	Public Awareness and Education
Description	Through activities such as outreach projects, distribution of maps, and environmental education, increase student and staff awareness of natural and manmade hazards.
Hazard(s)	Animal & Plant Disease, Dam Failure, Drought, Earthquake, Expansive Soils, Extreme Temperature, Flooding, Grass/Wildfire, Hazardous Materials Release, Human Infectious Diseases, Infrastructure Failure, Severe Thunderstorms, Severe Winter Storms, Sinkhole, Terrorism & Civil Unrest, Tornado & Windstorm, Transportation Incident
Estimated Cost	Staff Time
Local Funding Source	Alden Community School District
Timeline	2-5 years
Priority	Medium
Lead Agency/Department	Alden Community School District
Status	In progress

Plan Maintenance

Hazard Mitigation Plans should be living documents and updated regularly to reflect changes in hazard events, priorities, and mitigation actions. These updates are encouraged to occur after every major disaster event, alongside planning documents (e.g., annual budgets, etc.), during the fall before the HMA grant cycle begins, and/or prior to other funding opportunity cycles begin.

The local planning team is responsible for reviewing and updating this profile as changes occur or after a major event. The local planning team will include the Superintendent, Principal, and School Nurse. The plan will be reviewed annually. The district will involve students, staff, and parents in the plan review and revision process through board meetings and staff meetings.

Fire District Profile

Providence Township Fire District

Hardin County
Hazard Mitigation Plan 2023

Local Planning Team

Table NPF.1: New Providence Fire District Planning Team

Name	Title	Jurisdiction	Meeting Attendance
Scott Williams	Fire Chief	Providence Twp Fire District	Round 2
Slade Faris	Fire Chief (former)	Providence Twp Fire District	-

Location and Geography

The Providence Township Fire District (also known as New Providence Fire District or NPF) covers the City of New Providence and surrounding areas, totaling 23,000 acres. The rural field/CRP areas are most at risk to fire.

Demographics

See the City of New Providence and Hardin County profiles for regional demographic information. The New Providence Fire District serves approximately 400 residents.

Future Development Trends

In the past five years, the fire district has added a first responder service, a monitor to the grass rig, new SCBAs, and numerous tools. The district is currently fundraising to expand the existing fire station.

Staffing

The New Providence Fire District is a Providence Township department and is governed by the Providence Township Board of Trustees. The fire district is made up of 23 volunteers, including the following.

- Fire Chief
- Assistant Fire Chief (2)
- EMS Captain (2)
- Secretary/Treasurer

Capabilities

Due to the unique structure of fire districts, the typical capability assessment table was not used. The following table summarizes the district’s overall capabilities. NPFD will continue to utilize existing relationships with local, county, state, and federal agencies in the implementation of mitigation projects. The fire district actively communicates important information through social media and attends city council meetings. The district does not have school facilities but does engage the local homeschool children in fire safety education. A Farm Credit grant and Hardin County Endowment grant were awarded to the district in the last five years. District funds are mostly limited to maintaining current facilities and systems; however, a large portion of funds are dedicated to a new fire station project. Funds have remained about the same over recent years.

Table NPF.2: Overall Capability

Overall Capability	Limited/Moderate/High
Financial resources needed to implement mitigation projects	Moderate
Staff/expertise to implement projects	Moderate
Public support to implement projects	Moderate
Time to devote to hazard mitigation	Limited
Ability to expand and improve identified capabilities to achieve mitigation	Limited

Plan Integration

Providence Township Fire District has minimal planning documents. These include Standard Operating Guidelines (SOGs). SOGs outline the district’s response to a variety of different calls that could be received. The district will seek out and evaluate any opportunities to integrate the results of the current HMP into other planning mechanisms and updates.

Community Lifelines

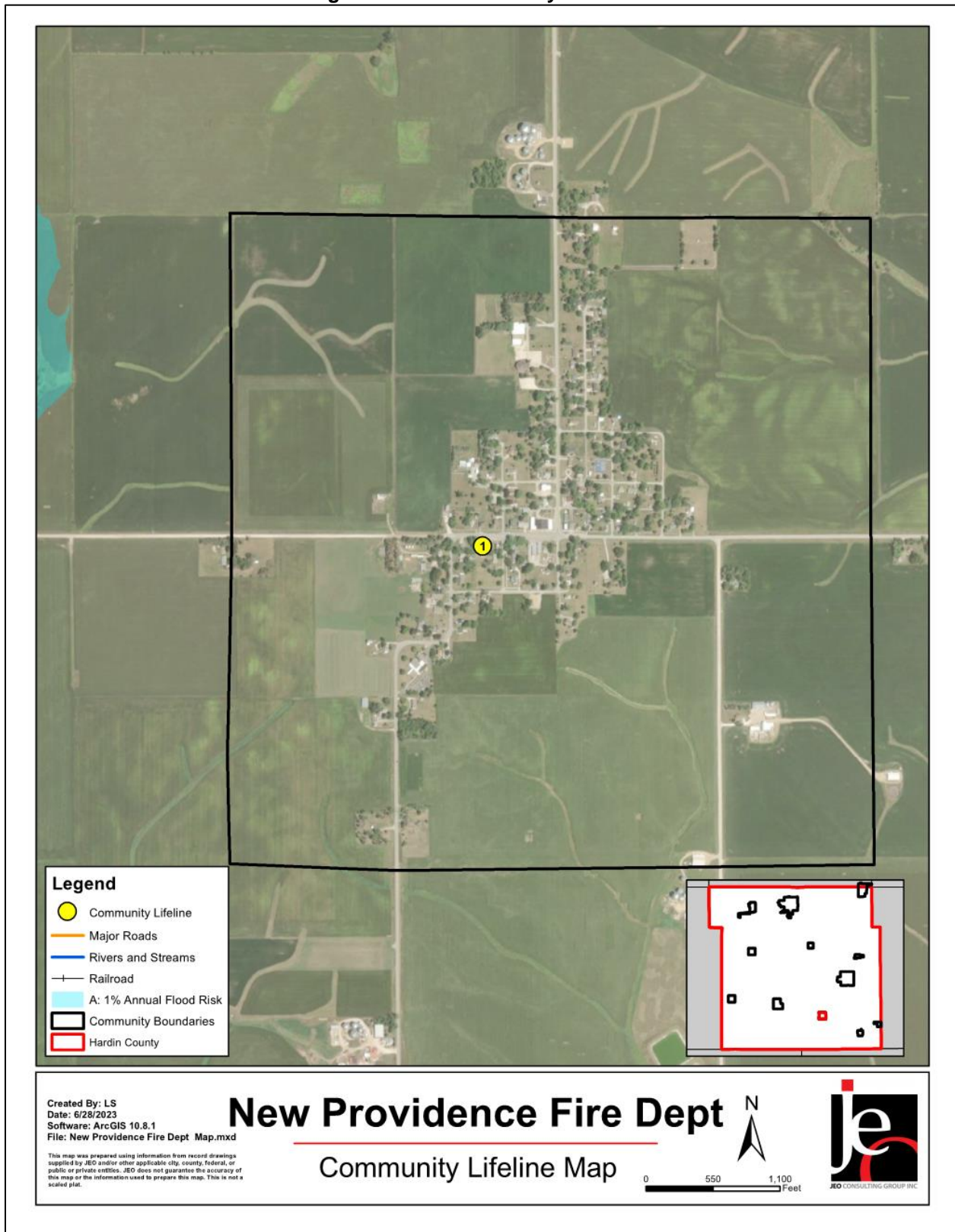
Each participating jurisdiction identified community lifelines that are vital for disaster response and essential for returning the jurisdiction’s functions to normal during and after a disaster per the FEMA Community Lifelines guidance. The FEMA-recognized lifelines include: Safety and Security; Food, Water, and Shelter; Health and Medical; Energy; Communication; Transportation; and Hazardous Material facilities.



Table NPF.3: Community Lifelines

CL#	Name	Lifeline Type	Generator (G) Shelter (S)	Floodplain (Y/N)
1	Fire Station	Safety and Security	-	N

Figure NPF.1: Community Lifelines



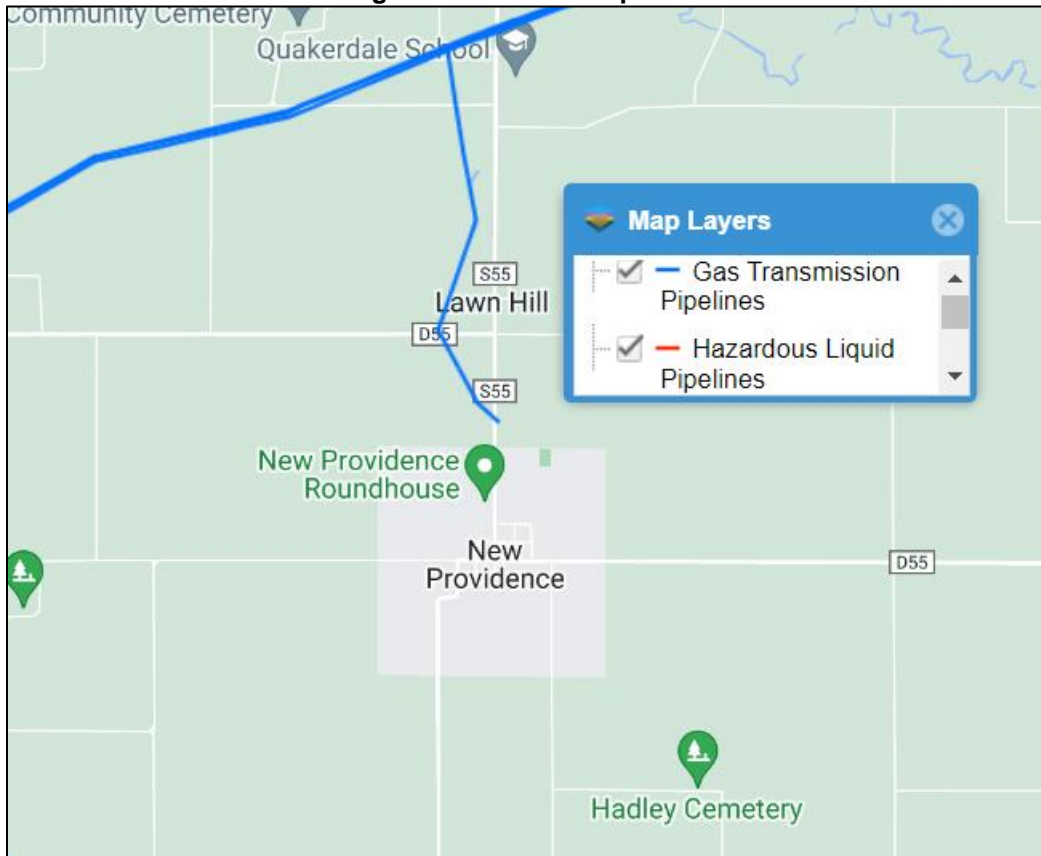
Transportation

According to the planning team, routes of concern are gravel roads throughout the district, especially during wet periods. When they are wet, it slows down the response time and decreases the ability to safely handle large/heavy equipment. Some trucks, especially the tanker, are drastically underpowered when these conditions are encountered.

Hazardous Materials

The Hazardous Materials Lifeline includes chemical storage facilities, pipelines, and transported chemical tanks. There are multiple gas transmission pipelines that travel within the district. These can be seen in Figure NPF.2.

Figure NPF.2: Area Pipelines



Source: National Pipeline Mapping System¹⁵

According to the Tier II System reports submitted to the Iowa Department of Natural Resources, there are two chemical storage sites within or near the City of New Providence that contain hazardous materials (listed in Table NPF.4). The planning team indicated that various chemicals are regularly transported along routes through the district. These increase seasonally due to agricultural uses. District response resources include a pumper, tanker, equipment van, grass rig, and a Polaris ranger. The district does inhouse training on spills they may encounter as well as HAZMAT recertification classes.

15 National Pipeline Mapping System. 2022. "Public Viewer." Accessed April 2023. <https://pvnpmms.phmsa.dot.gov/PublicViewer/>.

Table NPF.4: Chemical Storage Sites

Facility Name	Address
Innovative Ag Services - Lawn Hill	27654 County Hwy S. 55, New Providence, IA
New Providence CO – Heart of Iowa Communications Cooperative	305 1/2 N Main Avenue, New Providence, IA

Source: E-Plan¹⁶

Historical Occurrences

See the community profile for the City of New Providence for historical hazard events.

Hazard Prioritization

The Hardin County Hazard Mitigation Plan evaluates a range of natural and manmade hazards which pose a risk to the county, communities, and other participants. For a review and analysis of identified regional hazards, please see *Section Four: Risk Assessment*. A full list of historical hazard occurrences can be found in the Hardin County jurisdictional profile.

The hazards discussed in detail below were selected by the local planning team from the regional hazard list as the relevant hazards for the jurisdiction. The selected hazards were prioritized by the local planning team based on historical hazard occurrences, potential impacts, and the district’s capabilities.

Grass and Wildland Fire

Grass and Wildland Fires are a top hazard of concern for the fire district due to the frequency of prescribed fires and dry conditions. The district is currently working on raising money for a new fire station to increase its capacity to fight fires in the area.

Severe Thunderstorms (Includes Hail and Lightning)

The planning team noted that when storm events hit the area and multiple people need assistance, it requires additional help beyond the volunteer base to handle the situation. The county offers text alerts for sever weather and the fire station has its own weather radio.

Severe Winter Storms

Severe winter storms are a regular part of the climate and weather for New Providence Fire. Severe winter storms include blizzards, ice accumulation, heavy snow, and winter storms. These storms can cause power outages during bitterly cold temperatures, road closures, and economic impacts. According to the NCEI, there were 87 winter storm events in Hardin County from 1996 to 2022. The planning team noted that when storm events hit the area and multiple people need assistance, it requires additional help beyond the volunteer base to handle the situation.

Tornado and Windstorm

Tornadoes and Windstorms have the potential for significant damage, economic impacts, and loss of life. Windstorms are common across the county and can cause property and tree damage and brief power outages. Tornadoes are much less common, but the impacts can be far greater. Between 1996 and 2022, the NCEI recorded 38 high wind events in Hardin County. The August

16 E-Plan – Emergency Response Information System. 2022. "Facility Search." Accessed November 2022. <https://erplan.net/eplan/actions/facilitySearch.htm>.

2020 derecho caused severe property damage from sustained straight line winds. It resulted in power loss for multiple days which especially affected those needing power for medical equipment. Damaged property and trees are still being cleaned up from the storm. The planning team noted that when storm events hit the area and multiple people need assistance, it requires additional help beyond the volunteer base to handle the situation. The fire district is planning a new fire station with a generator and storm shelter/safe room.

Mitigation Strategy

New Mitigation and Strategic Actions

Mitigation Action	New Fire Station with Generator and Emergency Shelter/Safe Room
Description	Construct a new fire station with generator and safe room/shelter
Hazard(s)	Dam Failure, Earthquake, Extreme Temperature, Flooding, Grass/Wildfire, Hazardous Materials Release, Human Infectious Diseases, Infrastructure Failure, Severe Thunderstorms, Severe Winter Storms, Terrorism & Civil Unrest, Tornado & Windstorm, Transportation Incident
Estimated Cost	\$500,000+
Local Funding Source	Fundraising
Timeline	2-5 years
Priority	High
Lead Agency/Department	Providence Township Fire District
Status	Currently fundraising.

Mitigation Action	Public Awareness/Education
Description	Through activities such as outreach projects, distribution of maps, and environmental education, increase public awareness of natural and manmade hazards to both public and private property owners, renters, businesses, and local officials about hazards and ways to protect people and property from these hazards.
Hazard(s)	Animal & Plant Disease, Dam Failure, Drought, Earthquake, Expansive Soils, Extreme Temperature, Flooding, Grass/Wildfire, Hazardous Materials Release, Human Infectious Diseases, Infrastructure Failure, Severe Thunderstorms, Severe Winter Storms, Sinkhole, Terrorism & Civil Unrest, Tornado & Windstorm, Transportation Incident
Estimated Cost	\$3,000+
Local Funding Source	General Fund
Timeline	2-5 years
Priority	Low
Lead Agency/Department	Providence Township Fire District
Status	Not started

Plan Maintenance

Hazard Mitigation Plans should be living documents and updated regularly to reflect changes in hazard events, priorities, and mitigation actions. These updates are encouraged to occur after every major disaster event, alongside planning documents (e.g., annual budgets, etc.), during the fall before the HMA grant cycle begins, and/or prior to other funding opportunity cycles begin.

The fire department's planning team is responsible for reviewing and updating this planning profile as changes can occur before or after a major event. The district's planning team includes the Fire Chief, Assistant Chiefs, and Hardin County EMA. The plan will be reviewed annually, and the public will be involved in the reviews and revisions via board meetings.

School District Profile

South Hardin Community Schools

Hardin County
Hazard Mitigation Plan 2023

Local Planning Team

Table SHS.1: South Hardin Schools Local Planning Team

Name	Title	Jurisdiction	Meeting Attendance
Adam Zellmer	Superintendent	South Hardin Schools	Video Recordings
Mike May	Maintenance Director	Eldora-New Providence CSD	-
Kevin Krakow	Maintenance Director	Hubbard-Radcliffe CSD	-

Location and Services

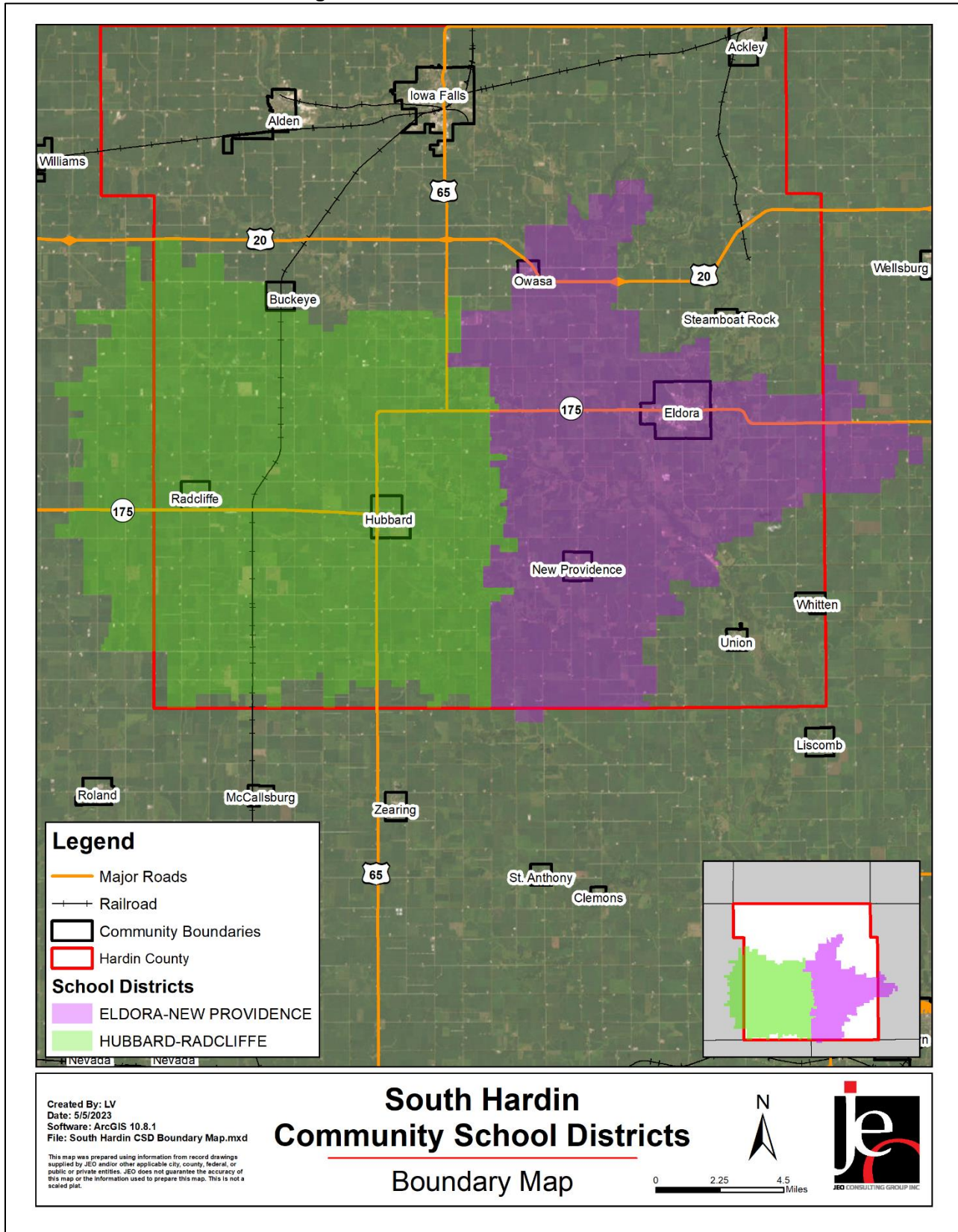
South Hardin Community Schools is made up of Eldora-New Providence Community School District (CSD) and Hubbard-Radcliffe CSD and is located mostly in southern Hardin County. The two districts have a whole grade sharing agreement and have a joint middle school and a joint high school. South Hardin Schools is comprised of four schools: South Hardin High School, South Hardin Middle School, Eldora-New Providence Elementary, and Hubbard-Radcliffe Elementary. The district offices are located in Eldora and Hubbard. According to the planning team, students open-enroll in South Hardin Schools (SHS) from Steamboat Rock, Iowa Falls, Buckeye, Union, Whitten, and Alden. In addition to English, Spanish is spoken by some in the district.

Demographics

Figures SHS.2 and SHS.3 display the historical student population trend starting with the 2005-06 school year and ending with the 2022-2023 year. These figures indicate that the student population has fluctuated over the past five years but did increase in the last year. There are 540 students enrolled in Eldora-New Providence Schools and 377 enrolled in Hubbard-Radcliffe Schools.¹⁷ South Hardin Schools anticipates little change in population over the next five years.

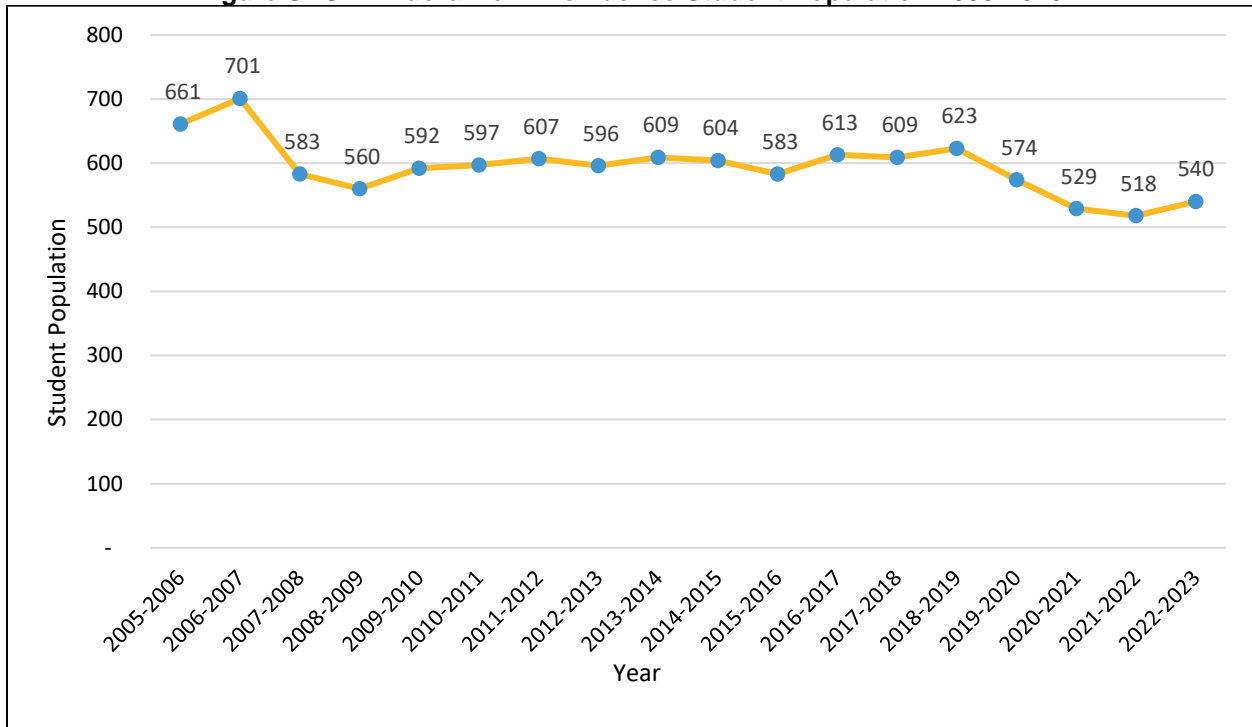
¹⁷ Iowa Department of Education. "Iowa Public School District PreK-12 Enrollments by District, Grade, Race and Gender." Accessed May 2023. <https://eduateiowa.gov/data-reporting/education-statistics-pk-12>.

Figure SHS.1: South Hardin Schools



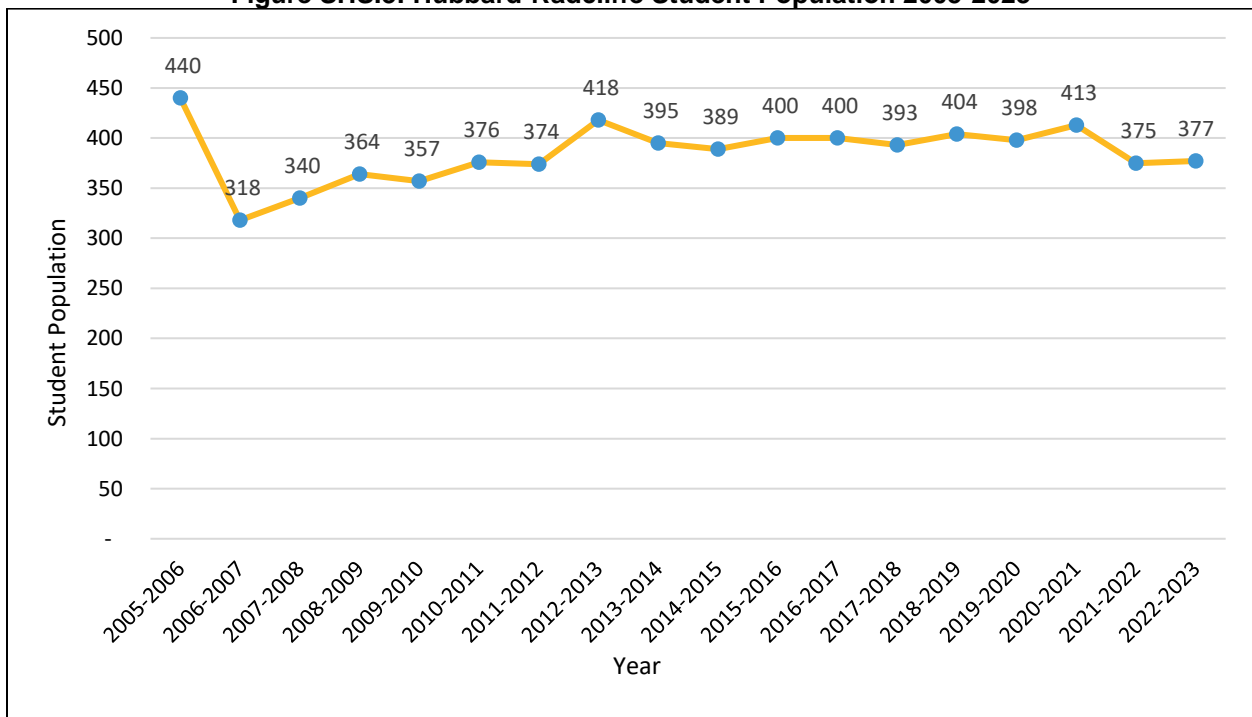
Section Seven: South Hardin Schools Profile

Figure SHS.2: Eldora-New Providence Student Population 2005-2023



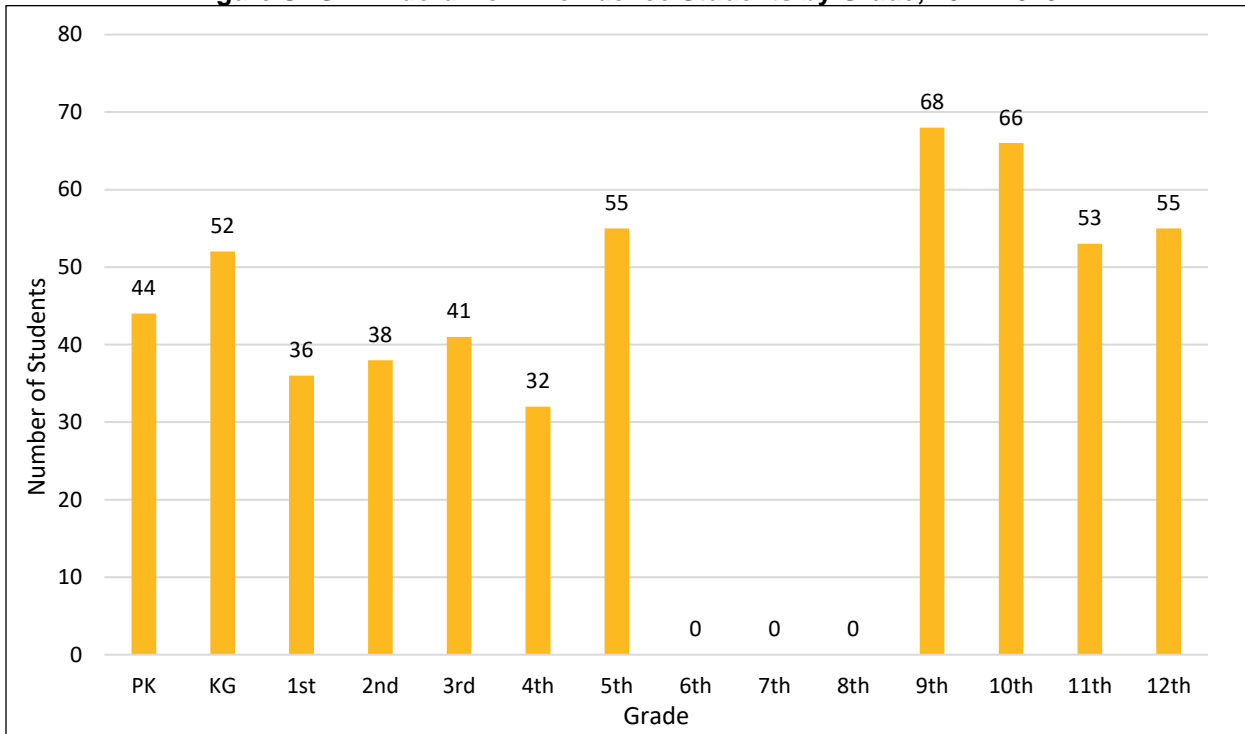
Source: Iowa Department of Education

Figure SHS.3: Hubbard-Radcliffe Student Population 2005-2023



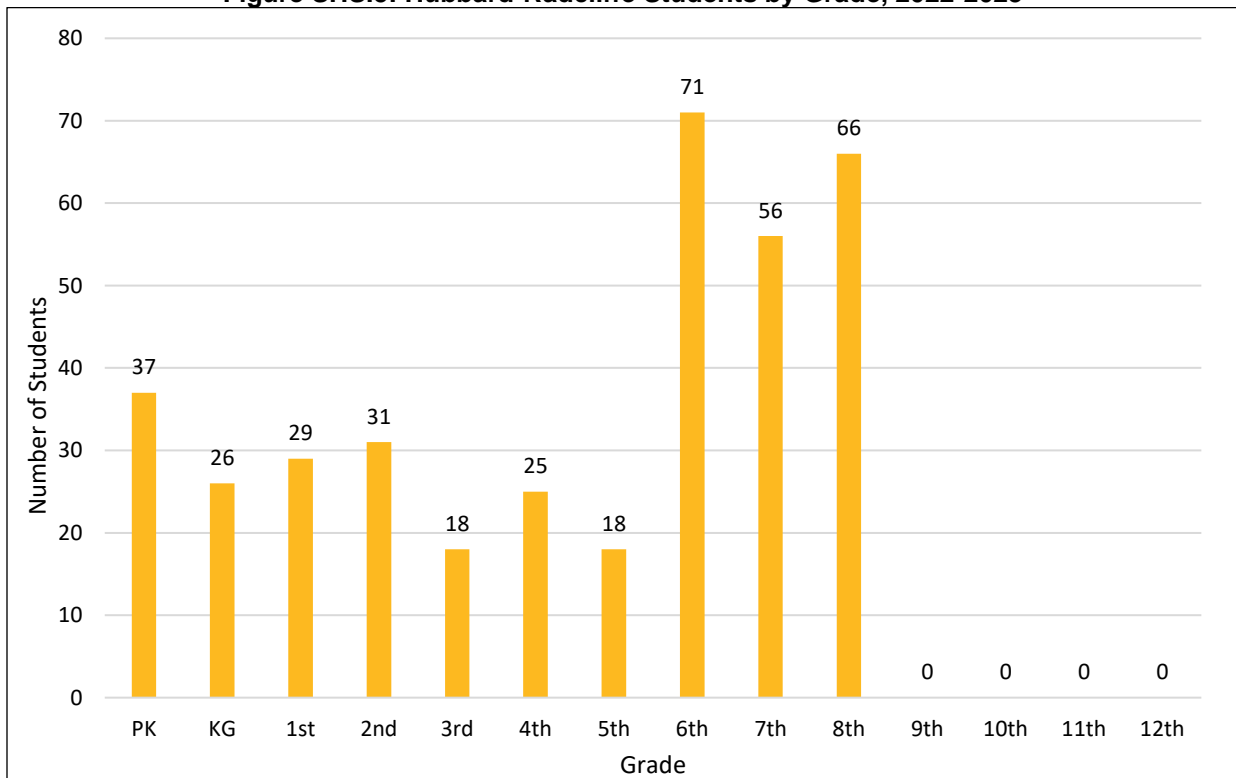
Source: Iowa Department of Education

Figure SHS.4: Eldora-New Providence Students by Grade, 2022-2023



Source: Iowa Department of Education

Figure SHS.5: Hubbard-Radcliffe Students by Grade, 2022-2023



Source: Iowa Department of Education

Figures SHS.4 and SHS.5 indicate that the largest number of students (when combining districts) are in Pre-Kindergarten, Kindergarten, and 5th grades. The lowest number of students are in 7th, 11th, and 12th grades. According to the Iowa Department of Education, 43.5% of students receive either free or reduced priced meals at school. This is higher than the state average of 42.3%. Additionally, 16.2% of students are in the Special Education Program and 1.3% of students are English Language Learners. These particular students may be more vulnerable during a hazardous event than the rest of the student population.

Table SHS.2: K-12 Student Statistics, 2022-2023

	Eldora-New Providence	Hubbard-Radcliffe	State of Iowa
Free/Reduced Priced Meals	44.8%	41.8%	42.3%
Special Education Students*	17.8%	14.0%	13.2%
English Language Learners (ESL)	1.6%	0.9%	6.9%

Source: Iowa Department of Education¹⁸

*Special education student enrollment data currently only available for 2021-2022.

Administration and Staff

South Hardin Schools has a superintendent, four principals, and supportive staff. The Eldora-New Providence school board is made up of seven members. The Hubbard-Radcliffe school board is made up of five members. South Hardin Schools also has a number of additional departments and staff that may be available to implement hazard mitigation initiatives. SHS trains its staff about emergency procedures annually, in-person and online. There are approximately 200 staff members employed by South Hardin Schools.

Capability Assessment

The capability assessment consisted of a review of local existing policies, regulations, plans, and programs with hazard mitigation capabilities. The following tables summarize the district’s planning and regulatory capability; administrative and technical capability; fiscal capability; educational and outreach capability; and overall capability to implement mitigation projects.

Students and families are educated about emergency procedures regularly and the district notifies parents and staff by email about emergency events. The notifications are provided in the language preferred by the recipient based on a language survey. South Hardin Schools also partners with local fire and police department for education.

¹⁸ Iowa Department of Education. “Student Demographic Information.” Accessed May 2023. <https://educateiowa.gov/data-reporting/education-statistics-pk-12>

Table SHS.3: Capability Assessment

Capability/Planning Mechanism		Yes/No
Planning Capability	Facility Improvements Plan	Yes
	Continuity of Operations Plan	No
	Crisis Response Plan	Yes
	Strategic Plan	Yes
	Other (if any)	
Administration & Technical Capability	Grant Manager	No
	Mutual Aid Agreement	No
	Other (if any)	
Fiscal Capability	Applied for grants in the past	Yes
	Awarded grants in the past	Yes
	Authority to levy taxes for specific purposes such as mitigation projects	Yes
	General Obligation Revenue or Special Tax Bonds	Yes
	Approved bonds in the past	Yes
	Flood Insurance	Yes
	Other (if any)	
Education & Outreach Capability	Local school groups or non-profit organizations focused on environmental protection, emergency preparedness, access, and functional needs populations, etc. (Ex. Parent groups, Crisis Response Teams, etc.)	Yes
	Hazard education or information program	No
	StormReady Certification	No
	Other (if any)	
Drills	Fire	4 / year
	Tornado	4 / year
	Intruder	1 / year
	Bus evacuation	2 / year
	Evacuation	1 / year
	Other (if any)	

Table SHS.4: Overall Capability

Overall Capability	Limited/Moderate/High
Financial resources needed to implement mitigation projects	Limited
Staff/expertise to implement projects	Limited
Public support to implement projects	Limited
Time to devote to hazard mitigation	Limited
Ability to expand and improve identified capabilities to achieve mitigation	Limited

Plan Integration

Grants and Funding

The local planning team indicated that district funds are limited to maintaining current facilities and systems at Eldora-New Providence CSD but are sufficient to pursue new capital projects at Hubbard-Radcliffe CSD. Funds for both districts have remained about the same over recent years. No grants were applied for over the last five years.

Crisis Response Plan

The school districts use a Crisis Response Plan to react to hazardous events. The Crisis Response Plan discusses natural hazards, addresses shelter in place protocols, identifies scenarios requiring evacuation and critical evacuation routes, identifies sheltering locations, identifies opportunities for mitigation following an event, and identifies any gaps related to hazards. The plan is reviewed yearly in July.

Future Development Trends

In the last five years new bus barns were built in Radcliffe and the old high school building was demolished. There are currently plans for a new bus barn in Hubbard, the renovation of Eldora-New Providence Elementary, and an addition at Eldora-New Providence Elementary.

Community Lifelines

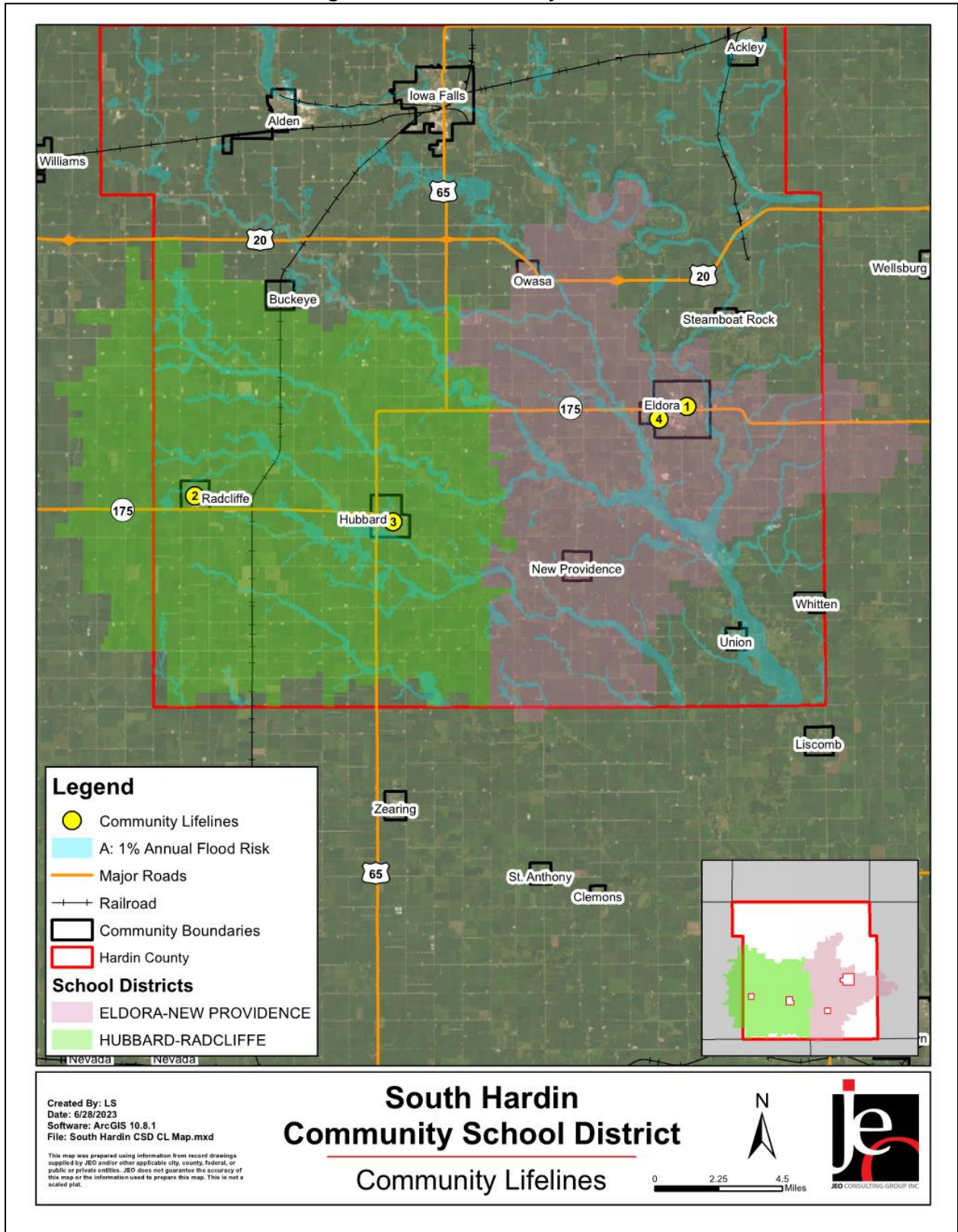
Each participating jurisdiction identified community lifelines that are vital for disaster response and essential for returning the jurisdiction’s functions to normal during and after a disaster per the FEMA Community Lifelines guidance. The FEMA-recognized lifelines include: Safety and Security; Food, Water, and Shelter; Health and Medical; Energy; Communication; Transportation; and Hazardous Material facilities.



Table SHS.5: Community Lifelines

CL#	Name	Lifeline Type	Generator (G) Shelter (S)	Floodplain (Y/N)
1	Eldora-New Providence Elementary School	Other	S	-
2	Hubbard-Radcliffe Elementary School	Other	S	-
3	South Hardin Middle School	Other	S	-
4	South Hardin High School	Other	S	-

Figure SHS.6: Community Lifelines



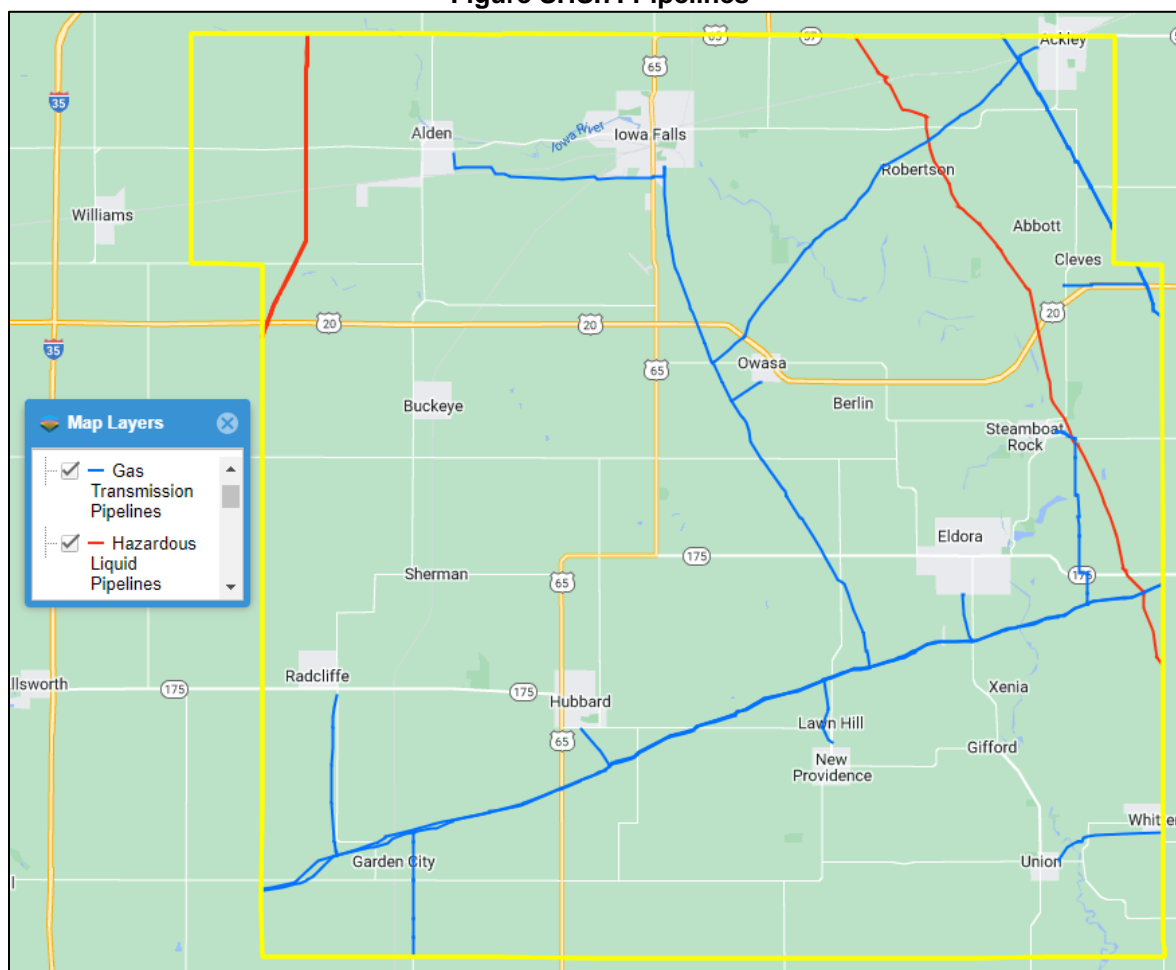
Transportation

According to the planning team, no significant transportation accidents have impacted schools within the district. The Eldora-New Providence CSD owns nine buses, and the Hubbard-Radcliffe CSD owns six. Approximately 450 children are bused to and from school.

Hazardous Materials

The Hazardous Materials Lifeline includes chemical storage facilities, pipelines, and transported chemical tanks. There are multiple pipelines that travel near South Hardin Schools. These can be seen in Figure SHS.7.

Figure SHS.7: Pipelines



Source: National Pipeline Mapping System¹⁹

According to the Tier II System reports submitted to the Iowa Department of Natural Resources, there are 11 chemical storage sites within or near Eldora, Hubbard, New Providence, and Radcliffe that contain hazardous materials (listed in Table SHS.6). No chemical releases have occurred that caused a school to lock down or evacuate.

19 National Pipeline Mapping System. 2022. "Public Viewer." Accessed April 2023. <https://pvnpmns.phmsa.dot.gov/PublicViewer/>.

Table SHS.6: Chemical Storage Lifelines

Facility Name	Address
AgVantage FS, A Division of Growmark, Inc. - Eldora West Plant	29234 Hwy 175, Eldora
Eldora CO	1426 14th Street, Eldora
ITC Midwest Otter Creek	105 17th Street, Eldora
Remington Seeds	1625 18th Avenue, Eldora
Winfield United - Eldora	30473 260th Street, Eldora
AT&T - IA4660	24762 I Avenue, Hubbard
Innovative Ag Services - Hubbard Bulk Fuels	115 E Oak Street, Hubbard
Northern Natural Gas - Hubbard Compressor Station	21497 290 Street, Hubbard
Innovative Ag Services - Lawn Hill	27654 Hwy S55, New Providence
New Providence CO	305 1/2 N Main Ave, New Providence
Farmers Cooperative Elevator - Radcliffe	109 Isabella Street, Radcliffe

Source: E-Plan²⁰

20 E-Plan – Emergency Response Information System. 2022. "Facility Search." Accessed November 2022.
<https://erplan.net/eplan/actions/facilitySearch.htm>.

Hazard Prioritization

The Hardin County Hazard Mitigation Plan evaluates a range of natural and manmade hazards which pose a risk to the county, communities, and other participants. For a review and analysis of identified regional hazards, please see *Section Four: Risk Assessment*. A full list of historical hazard occurrences can be found in the Hardin County jurisdictional profile.

The hazards discussed in detail below were selected by the local planning team from the regional hazard list as the relevant hazards for the jurisdiction. The selected hazards were prioritized by the local planning team based on historical hazard occurrences, potential impacts, and the district's capabilities.

Severe Thunderstorms (includes hail & lightning)

This hazard was identified as a top hazard of concern for the school district due to past events that damaged school buildings. A hailstorm in July 2009 caused major roof and window damage to all school buildings in Eldora. The district changed roofing materials on two buildings to mitigate damage from future storms.

Severe Winter Storms

Severe winter storms are a regular part of the climate and weather for the school district. Severe winter storms include blizzards, ice accumulation, heavy snow, and winter storms. These storms can cause power outages during bitterly cold temperatures, road closures, and economic impacts. According to the NCEI, there were 87 winter storm events in Hardin County from 1996 to 2022.

The planning team identified this as a hazard of top concern due mainly to potential for transportation disruption, power outages, and loss of service to students. Backup generators were identified as being needed to mitigate vulnerability to this hazard.

Tornado and Windstorm

Tornado and Windstorm was identified as a top hazard of concern for the school district due to the potential for human injury and damage to school buildings/infrastructure. Backup generators are needed in case of power outages.

Mitigation Strategy

Completed Mitigation and Strategic Actions

Eldora-New Providence:

Mitigation Action	Demolition of Abandoned Buildings
Description	Demolition of 1916 abandoned building
Hazard(s)	Infrastructure Failure
Lead Agency	Eldora-New Providence School District
Status	Complete

Hubbard-Radcliffe School District:

Mitigation Action	Adopt a Facility Safety Plan
Description	Write a facility safety plan to ensure the safety of students, faculty, and staff.
Hazard(s)	Animal & Plant Disease, Dam Failure, Drought, Earthquake, Expansive Soils, Extreme Temperature, Flooding, Grass/Wildfire, Hazardous Materials Release, Human Infectious Diseases, Infrastructure Failure, Severe Thunderstorms, Severe Winter Storms, Sinkhole, Terrorism & Civil Unrest, Tornado & Windstorm, Transportation Incident
Lead Agency	Hubbard-Radcliffe School District
Status	Plan has been written.

Mitigation Action	Designated Shelters Education
Description	Inform students, employees, and visitors of designated shelters. Use school assemblies, regular PA announcements, and informational sheets in classrooms and hallways
Hazard(s)	Dam Failure, Earthquake, Extreme Temperature, Flooding, Grass/Wildfire, Hazardous Materials Release, Human Infectious Diseases, Severe Thunderstorms, Severe Winter Storms, Terrorism & Civil Unrest, Tornado & Windstorm, Transportation Incident
Lead Agency	Hubbard-Radcliffe School District
Status	Complete

Mitigation Action	Purchase /Update Snow Removal Equipment
Description	Purchase/update snow removal equipment for use following a severe winter storm
Hazard(s)	Severe Winter Storms, Transportation Incident
Lead Agency	Hubbard-Radcliffe School District
Status	Snow removal equipment has been updated.

Continued Mitigation and Strategic Actions

Eldora-New Providence:

Mitigation Action	Protection of Damage to Boiler and Heat/Ventilation Control System
Description	Elevate and/or relocate the boiler and heat/ventilation control system at Eldora-New Providence Schools, as applicable.
Hazard(s)	Extreme Temperatures, Infrastructure Failure
Estimated Cost	TBD
Local Funding Source	Eldora-New Providence School District
Timeline	2-5 years
Priority	High
Lead Agency/Department	Eldora-New Providence School District
Status	Not started.

Mitigation Action	Purchase Generators for School Buildings
Description	Purchase generators and hookups for use in school buildings and offices.
Hazard(s)	Dam Failure, Earthquake, Extreme Temperature, Flooding, Grass/Wildfire, Hazardous Materials Release, Human Infectious Diseases, Infrastructure Failure, Severe Thunderstorms, Severe Winter Storms, Terrorism & Civil Unrest, Tornado & Windstorm, Transportation Incident
Estimated Cost	\$20,000+ per generator
Local Funding Source	Eldora-New Providence School District
Timeline	2-5 years
Priority	High
Lead Agency/Department	Eldora-New Providence School District
Status	Early stages

Mitigation Action	Active Shooter Containment and Training
Description	Find and install a device to every classroom door that would prevent an active shooter from bursting through the door and harming the people in the classroom. Conduct Active Shooter Training
Hazard(s)	Terrorism and Civil Unrest
Estimated Cost	\$150+ per unit
Local Funding Source	Eldora-New Providence School District
Timeline	2-5 years
Priority	High
Lead Agency/Department	Eldora-New Providence School District
Status	Active shooter training is conducting regularly.

Mitigation Action	Provide Facilities for Hazard Education
Description	Make school facilities available for hazard presentations to community and students. The district has held a number of ALiCE trainings and an emergency drill at the football field.
Hazard(s)	Animal & Plant Disease, Dam Failure, Drought, Earthquake, Expansive Soils, Extreme Temperature, Flooding, Grass/Wildfire, Hazardous Materials Release, Human Infectious Diseases, Infrastructure Failure, Severe Thunderstorms, Severe Winter Storms, Sinkhole, Terrorism & Civil Unrest, Tornado & Windstorm, Transportation Incident
Estimated Cost	Staff Time
Local Funding Source	Eldora-New Providence School District
Timeline	2-5 years
Priority	High
Lead Agency/Department	Eldora-New Providence School District
Status	Trainings are conducted regularly.

Mitigation Action	Plant Windbreaks
Description	Replacement of trees as shelter/wind barrier at the Elementary School Campus to replace trees that were damaged by August 9, 2009, hail- and windstorm
Hazard(s)	Tornado and Windstorm, Severe Winter Storms, Severe Thunderstorms
Estimated Cost	\$4,000
Local Funding Source	Eldora-New Providence Community School District
Timeline	2-5 years
Priority	Medium
Lead Agency/Department	Eldora-New Providence School District
Status	Not started

Mitigation Action	Storm Drainage Improvements
Description	Complete storm drainage improvements at both High School and Elementary campuses.
Hazard(s)	Flooding, Infrastructure Failure
Estimated Cost	TBD
Local Funding Source	Eldora-New Providence School District
Timeline	2-5 years
Priority	Medium
Lead Agency/Department	Eldora-New Providence School District
Status	Not started

Section Seven: South Hardin Schools Profile

Mitigation Action	Establish Uniform Communication Protocols
Description	Hold a meeting with Hardin County emergency agencies to create uniform communication protocol for hazard events.
Hazard(s)	Animal & Plant Disease, Dam Failure, Drought, Earthquake, Expansive Soils, Extreme Temperature, Flooding, Grass/Wildfire, Hazardous Materials Release, Human Infectious Diseases, Infrastructure Failure, Severe Thunderstorms, Severe Winter Storms, Sinkhole, Terrorism & Civil Unrest, Tornado & Windstorm, Transportation Incident
Estimated Cost	Staff Time
Local Funding Source	Eldora-New Providence School District
Timeline	2-5 years
Priority	Medium
Lead Agency/Department	Eldora-New Providence School District
Status	Not started

Mitigation Action	Improve Shelter Areas in all School Buildings
Description	Study existing areas used for this purpose (tornado drill areas, etc.) and receive recommendations for improvements to provide improved shelter areas within buildings. There is now a safe room in the elementary building. There is also a second command center at the high school in case of an intruder.
Hazard(s)	Dam Failure, Earthquake, Extreme Temperature, Flooding, Grass/Wildfire, Hazardous Materials Release, Human Infectious Diseases, Severe Thunderstorms, Severe Winter Storms, Terrorism & Civil Unrest, Tornado & Windstorm, Transportation Incident
Estimated Cost	TBD
Local Funding Source	Eldora-New Providence School District
Timeline	2-5 years
Priority	Low
Lead Agency/Department	Eldora-New Providence School District
Status	Existing shelter areas are regularly reviewed.

Mitigation Action	Purchase Handheld Radios
Description	Purchase handheld radios capable of using a common frequency for use by multiple agencies.
Hazard(s)	Animal & Plant Disease, Dam Failure, Drought, Earthquake, Expansive Soils, Extreme Temperature, Flooding, Grass/Wildfire, Hazardous Materials Release, Human Infectious Diseases, Infrastructure Failure, Severe Thunderstorms, Severe Winter Storms, Sinkhole, Terrorism & Civil Unrest, Tornado & Windstorm, Transportation Incident
Estimated Cost	TBD
Local Funding Source	Eldora-New Providence School District
Timeline	2-5 years
Priority	Low
Lead Agency/Department	Eldora-New Providence School District
Status	Not started

Mitigation Action	Participate in Hazard Mitigation Drills
Description	Require practice drills based on hazard events for the school district.
Hazard(s)	Animal & Plant Disease, Dam Failure, Drought, Earthquake, Expansive Soils, Extreme Temperature, Flooding, Grass/Wildfire, Hazardous Materials Release, Human Infectious Diseases, Infrastructure Failure, Severe Thunderstorms, Severe Winter Storms, Sinkhole, Terrorism & Civil Unrest, Tornado & Windstorm, Transportation Incident
Estimated Cost	Staff Time
Local Funding Source	Eldora-New Providence School District
Timeline	2-5 years
Priority	Low
Lead Agency/Department	Eldora-New Providence School District
Status	Drills take place regularly.

Mitigation Action	Public Awareness and Education
Description	Through activities such as outreach projects, distribution of maps, and environmental education, increase student and staff awareness of natural and manmade hazards.
Hazard(s)	Animal & Plant Disease, Dam Failure, Drought, Earthquake, Expansive Soils, Extreme Temperature, Flooding, Grass/Wildfire, Hazardous Materials Release, Human Infectious Diseases, Infrastructure Failure, Severe Thunderstorms, Severe Winter Storms, Sinkhole, Terrorism & Civil Unrest, Tornado & Windstorm, Transportation Incident
Estimated Cost	Staff Time
Local Funding Source	Eldora-New Providence School District
Timeline	2-5 years
Priority	Medium
Lead Agency/Department	Eldora-New Providence School District
Status	In progress

Hubbard-Radcliffe School District:

Mitigation Action	Information Session for Drought, Extreme Temperatures, and Severe Winter Storms
Description	Create an information session for Hubbard-Radcliffe students and employees about drought, extreme temperatures, and severe winter storms. Educate students and employees on water conservation, heat saving ideas, and what to do in the event of a severe winter storm.
Hazard(s)	Drought, Extreme Temperatures, Severe Winter Storms
Estimated Cost	TBD
Local Funding Source	Hubbard-Radcliffe School District
Timeline	2-5 years
Priority	High
Lead Agency/Department	Hubbard-Radcliffe School District
Status	Hazard education and outreach takes place regularly.

Mitigation Action	Purchase Generators for School Buildings
Description	Purchase generators for each of the school buildings.
Hazard(s)	Dam Failure, Earthquake, Extreme Temperature, Flooding, Grass/Wildfire, Hazardous Materials Release, Human Infectious Diseases, Infrastructure Failure, Severe Thunderstorms, Severe Winter Storms, Terrorism & Civil Unrest, Tornado & Windstorm, Transportation Incident
Estimated Cost	\$20,000+ per generator
Local Funding Source	Hubbard-Radcliffe School District
Timeline	2-5 years
Priority	High
Lead Agency/Department	Hubbard-Radcliffe School District
Status	Not started

Mitigation Action	Ensure Safety of Playground Equipment During Extreme Heat Events
Description	Conduct safety evaluations of the playground equipment on hot days.
Hazard(s)	Extreme Temperatures
Estimated Cost	TBD
Local Funding Source	Hubbard-Radcliffe School District
Timeline	2-5 years
Priority	High
Lead Agency/Department	Hubbard-Radcliffe School District
Status	Safety evaluations occur when warranted.

Mitigation Action	Promote Home Disaster Preparedness
Description	Create a program to educate students and employees about the dangers of hazards and how to prepare during assemblies through interactive media like drills and workshops.
Hazard(s)	Animal & Plant Disease, Dam Failure, Drought, Earthquake, Expansive Soils, Extreme Temperature, Flooding, Grass/Wildfire, Hazardous Materials Release, Human Infectious Diseases, Infrastructure Failure, Severe Thunderstorms, Severe Winter Storms, Sinkhole, Terrorism & Civil Unrest, Tornado & Windstorm, Transportation Incident
Estimated Cost	Staff Time
Local Funding Source	Hubbard-Radcliffe School District
Timeline	2-5 years
Priority	High
Lead Agency/Department	Hubbard-Radcliffe School District
Status	Preparedness education and outreach occurs regularly.

Mitigation Action	Purchase Early Warning System
Description	Purchase a better early warning system
Hazard(s)	Extreme Temperature, Flooding, Grass/Wildfire, Severe Thunderstorms, Severe Winter Storms, Tornado and Windstorm
Estimated Cost	TBD
Local Funding Source	Hubbard-Radcliffe School District
Timeline	2-5 years
Priority	High
Lead Agency/Department	Hubbard-Radcliffe School District
Status	Not started

Mitigation Action	Construct a Safe Room in all Schools
Description	Construct a safe room at each of the schools in the district
Hazard(s)	Severe Thunderstorms, Severe Winter Storms, Tornado and Windstorm
Estimated Cost	TBD
Local Funding Source	Hubbard-Radcliffe School District
Timeline	2-5 years
Priority	High
Lead Agency/Department	Hubbard-Radcliffe School District
Status	Not started

Section Seven: South Hardin Schools Profile

Mitigation Action	Purchase Carbon Monoxide and Fire Detectors
Description	Purchase carbon monoxide and fire detectors for each of the schools in the district
Hazard(s)	Hazardous Materials Release, Grass and Wildland Fire
Estimated Cost	TBD
Local Funding Source	Hubbard-Radcliffe School District
Timeline	2-5 years
Priority	High
Lead Agency/Department	Hubbard-Radcliffe School District
Status	Detectors are updated/purchased as needed.

Mitigation Action	Purchase and Install Security Cameras at all Schools
Description	Purchase and install security cameras at main and other entrances of the schools.
Hazard(s)	Terrorism and Civil Unrest
Estimated Cost	TBD
Local Funding Source	Hubbard-Radcliffe School District
Timeline	2-5 years
Priority	High
Lead Agency/Department	Hubbard-Radcliffe School District
Status	In progress

Mitigation Action	Public Awareness and Education
Description	Through activities such as outreach projects, distribution of maps, and environmental education, increase student and staff awareness of natural and manmade hazards.
Hazard(s)	Animal & Plant Disease, Dam Failure, Drought, Earthquake, Expansive Soils, Extreme Temperature, Flooding, Grass/Wildfire, Hazardous Materials Release, Human Infectious Diseases, Infrastructure Failure, Severe Thunderstorms, Severe Winter Storms, Sinkhole, Terrorism & Civil Unrest, Tornado & Windstorm, Transportation Incident
Estimated Cost	Staff Time
Local Funding Source	Hubbard-Radcliffe School District
Timeline	2-5 years
Priority	Medium
Lead Agency/Department	Hubbard-Radcliffe School District
Status	In progress

Plan Maintenance

Hazard Mitigation Plans should be living documents and updated regularly to reflect changes in hazard events, priorities, and mitigation actions. These updates are encouraged to occur after every major disaster event, alongside planning documents (e.g., annual budgets, etc.), during the fall before the HMA grant cycle begins, and/or prior to other funding opportunity cycles begin.

The local planning team is responsible for reviewing and updating this profile as changes occur or after a major event. The local planning team will include the Superintendent. The plan will be reviewed annually. The district will involve students, staff, and parents in the plan review and revision process through updates on social media and Parent Square communication.