

Appendix B: Public Meeting Materials and Worksheets

Contents:

1. Round 1 Community Profile with Questions
2. Plan Integration Worksheet
3. Round 2 Community Profile with Questions

Round 1 Community Profile with Questions

Community Profile

Village of Alda

Central Platte NRD Hazard Mitigation Plan

2022

Name(s): _____

Date: _____

Worksheets Due By: _____

Please answer the questions in red italics. Your responses are critical for completing this Community Profile. If you are unsure of any questions, think of who could supply the information, please provide their name and position in the community.

Completed Community Profiles and other worksheets can be returned to JEO Consulting Group, Attn: Karl Dietrich, 2000 Q Street Ste 500, Lincoln, NE 68503 or kdietrich@jeo.com. If you have any questions, please call 402-742-7213.

Section Seven | Village of Alda Community Profile

Local Planning Team

Table ALD.1: Alda Local Planning Team

Name	Title	Jurisdiction

Location and Geography

The Village of Alda is in the center of Hall County and covers an area of 0.35 square miles. The major waterway in the area is the Wood River.

Demographics

Demographic Information will be added once Census data has been published.

Employment and Economics

Additional data will be added once Census data has been published.

Major Employers

The major employers in the community are Hornady, PMI, Traid, Futek, Bullet Weights, and Merrick Machines. Many of the residents in Alda commute to neighboring communities such as Grand Island, Kearney, and Wood River for work.

- *Is the information provided under Major Employers still accurate? Are there any new major employers?*

Housing

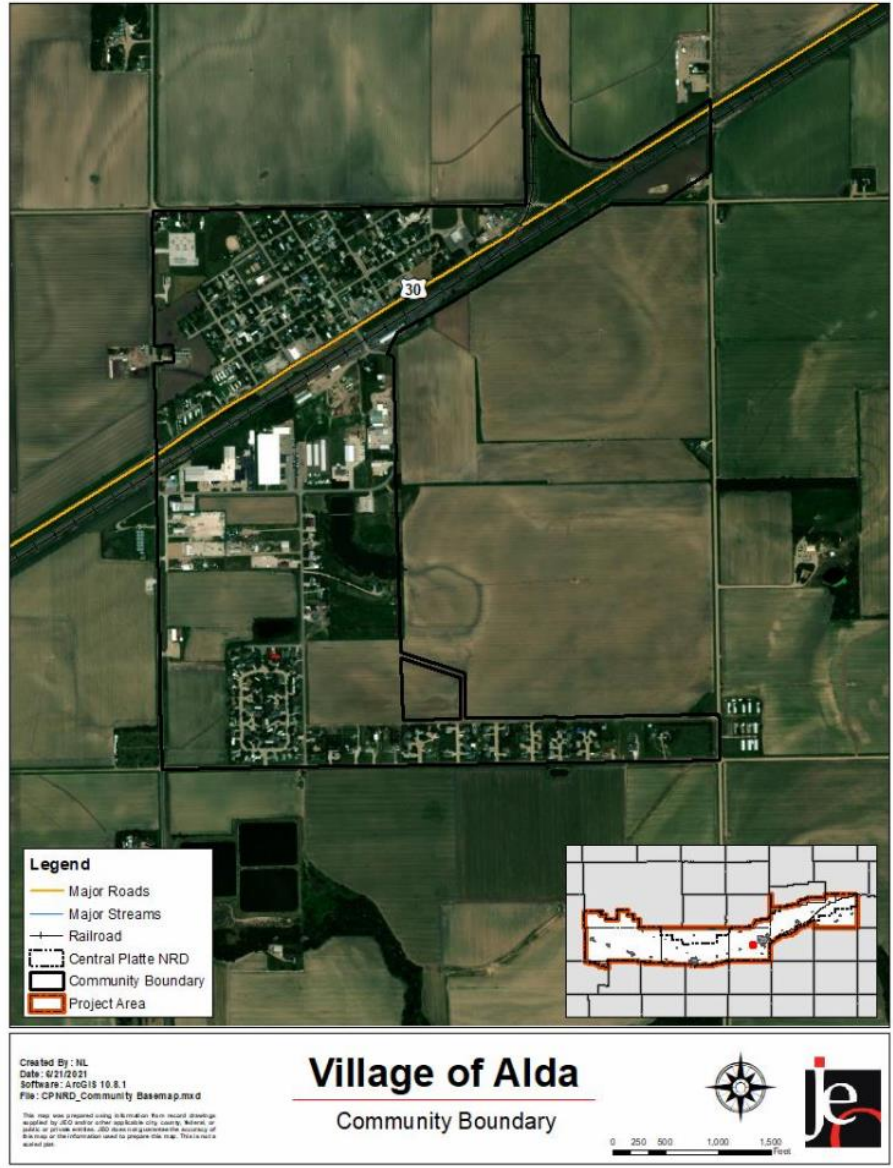
Additional data will be added once Census data has been published.

The age of housing may indicate which housing units were built prior to the development of state building codes. Vacant housing stock may also be more vulnerable to hazard events if it is poorly maintained. Unoccupied housing may also suggest that future development may be less likely to occur. Communities with a substantial number of mobile homes may be more vulnerable to the impacts of high winds, tornadoes, and severe thunderstorms if those homes are not anchored correctly. Renter-occupied housing depends on the initiative of landlords for proper maintenance and retrofitting to be resilient to disasters. They are less likely than homeowners to have flood insurance, or to know their risks to flooding and other hazards.

- *Does the community have a large number of mobile homes? Where are they located?*

Section Seven | Village of Alda Community Profile

Figure ALD.2: Village of Alda



Section Seven | Village of Alda Community Profile

Governance

A community's governance indicates the number of boards or offices that may be available to help implement hazard mitigation actions. The Village of Alda is governed by a Board Chairperson and a four-member village board; other governmental offices and departments that may be involved in implementing hazard mitigation initiatives are listed below.

Please verify the following and provide any additional offices, departments, or committees:

- *Clerk/Treasurer*
- *Planning Commission*
- *Housing Authority*
- *Water and Sewer Department*
- *Volunteer Fire Department*
- *Village Board of Trustees*
- *Other: _____*
- *_____*
- *_____*
- *_____*

Capability Assessment

The capability assessment consisted of a review of local existing policies, regulations, plans, and programs with hazard mitigation capabilities. The following tables summarize the community's planning and regulatory capability; administrative and technical capability; fiscal capability; educational and outreach capability; and overall capability to implement mitigation projects.

Are municipal funds sufficient to pursue new capital projects or are they limited to maintaining current facilities and systems?

Are a large portion of funds already dedicated to a specific project? If yes which project?

Has the amount of municipal funds increased, decreased, or stayed the same over recent years?

Section Seven | Village of Alda Community Profile

Please check the right column in the following table for your community. The table includes responses from the 2017 HMP. If there have been changes or updates, please cross out the answer and provide the updated answer and date.

Table ALD.3: Capability Assessment

Survey Components/Subcomponents		Yes/No
Planning & Regulatory Capability	Comprehensive Plan	Yes
	Capital Improvements Plan	No
	Economic Development Plan	No
	Local Emergency Operations Plan	Yes
	Floodplain Management Plan	No
	Storm Water Management Plan	No
	Zoning Ordinance	Yes
	Subdivision Regulation/Ordinance	Yes
	Floodplain Ordinance	Yes
	Building Codes	Yes (Local Codes)
	National Flood Insurance Program	Yes
	Community Rating System	No
	Other (if any)	
Administrative & Technical Capability	Planning Commission	Yes
	Floodplain Administration	Yes
	GIS Capabilities	No
	Chief Building Official	No
	Civil Engineering	Yes
	Local Staff Who Can Assess Community's Vulnerability to Hazards	No
	Grant Manager	No
	Mutual Aid Agreement	Yes
	Other (if any)	
Fiscal Capability	Capital Improvement Plan/ 1- & 6-Year plan	Yes
	Applied for grants in the past	Yes
	Awarded a grant in the past	Yes
	Authority to Levy Taxes for Specific Purposes such as Mitigation Projects	Yes
	Gas/Electric Service Fees	No
	Storm Water Service Fees	No
	Water/Sewer Service Fees	Yes
	Development Impact Fees	No
	General Obligation Revenue or Special Tax Bonds	Yes
	Other (if any)	
Education & Outreach	Local citizen groups or non-profit organizations focused on environmental protection, emergency	Yes

Section Seven | Village of Alda Community Profile

Survey Components/Subcomponents	Yes/No
Capability	
preparedness, access and functional needs populations, etc. Ex. CERT Teams, Red Cross, etc.	
Ongoing public education or information program (e.g., responsible water use, fire safety, household preparedness, environmental education)	Yes
Natural Disaster or Safety related school programs	Yes
StormReady Certification	No
Firewise Communities Certification	No
Tree City USA	No
Other (if any)	

Please rate your jurisdiction's overall capability in the following ways (Limited, Moderate, or High)

Overall Capability	Limited/Moderate/High
Financial resources to implement mitigation projects	
Staff/expertise to implement projects	
Public support to implement projects	
Time to devote to hazard mitigation	

Plan Integration

The Village of Alda Comprehensive Plan, last updated in 2003, contains some goals and objectives consistent with hazard mitigation. The plan directs development away from the floodplain, chemical facilities, and major transportation routes. Furthermore, it encourages infill development, clustering of development in sensitive areas, and elevation of structures located in the floodplain. The plan also encourages preservation of open space in hazard-prone areas, and allows for emergency access to all areas of town. There is not currently a timeline for updating the Comprehensive Plan, nor do they anticipate to further integrate the HMP into the Comprehensive Plan.

The Village's Zoning Ordinance was last updated in 2004. It discourages development in the floodplain, requires at least one-foot of elevation above base flood elevation in the floodplain, and prohibits development in within the floodway. It also discourages development near chemical storage sites and along major transportation routes in residential areas. The Ordinance encourages maintaining open space within the floodplain, limits development in the extraterrestrial jurisdiction, and accounts for current population trends.

Alda has an annex to the Hall County Local Emergency Operations Plan, last updated in 2015. The plan addresses the hazards of greatest concern, identifies scenarios that would require evacuation and critical evacuation routes, locations to be used for mass sheltering, and provides a clear assignment of responsibility during an emergency.

The Building Codes for Alda were recently updated in 2016 and are based on the 2012 International Building Codes. The Codes allow for raingardens in residential areas and require the use of fire resistant building materials.

Section Seven | Village of Alda Community Profile

Alda has a 1 & 6 Year Street Plan and Transportation Improvement Plan that is reviewed and updated annually. The plan includes many hazard mitigation projects such as stormwater projects, upsizing of culverts and drainage structures, and upgrading and regular maintenance of the storm sewer system. It also includes installing street aprons to facilitate drainage, improvements to transportation routes for drainage, bridge improvements, updating electrical distribution system, and installing emergency generators in critical facilities.

Plan integration information above is from the 2017 plan. Please fill out the plan integration worksheet to update the information.

Future Development Trends

- *What has changed over the past five years? (For example: new housing or businesses? Demolished buildings? New roads or areas of improvement?)*
- *Were any new structures developed in the floodplain or other hazardous areas? (For example, near chemical sites, the Wildland-Urban Interface, dam or levee inundation areas?) If so, what types of structures and where were they developed?*
- *Are there any new housing developments or new businesses/industry planned for the next five years? Where?*
- *Does your community have a future land use map? If yes, please provide a copy.*

Section Seven | Village of Alda Community Profile

Community Lifelines

Transportation

Alda's major transportation corridors include US Highway 30, which has an average of 6,490 vehicles daily, 475 of which are trucks.¹ The Village has one Union Pacific line traveling southwest to northeast on the southern edge of the community. Transportation information is important to hazard mitigation plans because it suggests possible evacuation corridors in the community, as well as areas more at risk of transportation incidents.

- *What other routes are a concern?*

- *Are chemicals regularly transported along local routes? If yes, which chemicals and which routes?*

- *Have chemical spills occurred locally? Please describe the impacts.*

- *Have other significant transportation events occurred locally? Please describe.*

- *Are critical facilities located along main transportation routes? Which ones and where?*

¹ Nebraska Department of Roads. 2018. "Interactive Statewide Traffic Counts Map." [map].
<https://gis.ne.gov/portal/apps/webappviewer/index.html?id=bb00781d6653474d945d51f49e1e7c34>.

Section Seven | Village of Alda Community Profile

Hazardous Materials

According to the Tier II System reports submitted to the Nebraska Department of Environment and Energy, there are six chemical storage sites within or near Alda which house hazardous materials. In the event of a chemical spill, the local fire department and emergency response may be the first to respond to the incident.

- *Besides the facilities below, are there other chemical storage facilities of concern in or near your community?*

Table ALD.4: Chemical Storage Sites

Name	Address	Located in Floodplain?
Island Supply Welding Co	4920 W US Highway 30	
Hornady/Alda LLC	108 S Apollo St	
Bullet Weights Inc	122 S Apollo St	
Agricultural Services Inc	150 Railroad St	
Platte Valley Energetics LLC	8318 W Old Potash Hwy	
Hornady Manufacturing Company	8350 W Old Potash Hwy	

Source: Nebraska Department of Environment and Energy²

Health and Medical Facilities

There are no medical and health facilities located within the community.

Critical Facilities

Each participating jurisdiction identified critical facilities vital for disaster response, providing shelter to the public, and essential for returning the jurisdiction's functions to normal during and after a disaster per the FEMA Community Lifelines guidance. Critical facilities were identified during the original planning process and updated by the local planning team as part of this plan update. The following table and figure provide a summary of the critical facilities for the jurisdiction.

Although they may not be listed in the table below, critical infrastructure also includes power infrastructure, cell towers, alert sirens, water infrastructure, wastewater infrastructure, and roadways.

Below are the critical facilities from the previous hazard mitigation plan. Please remove those that are no longer applicable by crossing them out. New critical facilities can be provided in the second table below. Indicate their approximate location and which facilities have a backup generator.

Critical facilities can include schools, municipal buildings, pumping stations, water towers, wells, power/water/wastewater plants, community halls, police/fire/rescue departments, etc.

² Nebraska Department of Environment and Energy. "Search Tier II Data." Accessed June 2021.

Section Seven | Village of Alda Community Profile

Table ALD.5: Critical Facilities

Name	Address or Intersection or Same Location	Generator (Y/N)
Village Hall/Community Center		Y
Fire Hall		Y – portable
Water Tower and Well		N
Well		Y
Wastewater Lagoon		N

Name	Address or Intersection	Generator (Y/N)

Map will be added before the Round 2 Meetings

Figure ALD.3: Critical Facilities

Parcel Improvements and Valuation

The planning team acquired GIS parcel data from the County Assessor to analyze the location, number, and value of property improvements (e.g. buildings, garages, sheds etc.) at the parcel level. The data did not contain the number of structures on each parcel. A summary of the results of this analysis is provided in the following table.

Data to be included at a later date.

Table ALD.6: Parcel Improvements and Value in the Floodplain

Number of Improvements	Total Improvement Value	Number of Improvements in Floodplain	Value of Improvements in Floodplain	Percentage of Improvements in Floodplain

Source: County Assessor, 2020

Historical Occurrences

See the Hall County profile for historical hazard events, including the number of events, damage estimates, and any fatalities or injuries.

Hazard Prioritization

The hazards discussed in detail below were either identified in the previous HMP and determined to still be of top concern or were selected by the local planning team from the regional list as relevant hazards for the community. The local planning team prioritized the selected hazards based on historical hazard occurrences, potential impacts, and the community’s capabilities. For more information regarding regional hazards, please see *Section Four: Risk Assessment*.

Please review the following section and answer the provided questions. Note that reported data in the following paragraphs is from the 2017 plan and does not reflect new data available through 2021.

Section Seven | Village of Alda Community Profile

Flooding

Although flooding was not identified as a hazard of top concern for the community, the Village does have a history of flooding. In 2005, torrential rainfall of 5-11 inches on May 11 and 12 led to widespread flash flooding throughout the County. Alda was part of an area that was declared a federal disaster area. Wood River near Alda, which had been dry for three years, tied a record with a crest of 12.2 feet early on the 12th. Records also indicate that Wood River flooded in 1967, 1968, and 1969, although no damage estimates are available. Flood crest data indicates that the June 1968 flood was 11.7 feet and the March 1969 event was 12 feet. The National Centers for Environmental Information reported a flood event for Alda on February 20, 2007.

The Village of Alda has flood risk areas to the south and east of the Village. Alda is a member of the NFIP however there are no NFIP policies in-force. There are no repetitive flood loss properties in the Village of Alda.

Is this hazard still of concern for your community? (circle one) Yes No
If no, please skip the following questions.

Have there been any changes since the last plan? Does this accurately describe the community's risk or concern related to this hazard? Please describe any recent events and their impacts on the community.

What were the impacts from the 2019 flood events on your community? What damages were sustained? Were evacuations required?

Which areas of the community are most prone to flooding? Please be as specific as possible.

What has the community done to mitigate risk to this hazard?

Section Seven | Village of Alda Community Profile

Hazardous Materials Release

The Village of Alda is concerned about chemical spills on the Union Pacific railway and Hwy 30. Gasoline, oil, anhydrous ammonia, and other unknown chemicals are regularly transported on these routes. There are no significant chemical spills reported by PHMSA. Critical facilities vulnerable to a chemical spill during transportation include the Village Office and Community Center, the water tower, Fire Hall, water booster station, and wastewater lagoons. Mitigation plans include identifying an emergency shelter for vulnerable populations, participating in hazardous spill emergency exercises, providing public education on the hazards associated with chemical spills, and improving available first responder equipment.

Is this hazard still of concern for your community? (circle one) Yes No
If no, please skip the following questions.

Have there been any changes since the last plan? Does this accurately describe the community's risk or concern related to this hazard? Please describe any recent events and their impacts on the community.

What are the local response resources? Do they have protective gear and training?

What has the community done to mitigate risk to this hazard?

Severe Thunderstorms (Includes Hail)

Alda experiences severe summer thunderstorms annually. The worst of these was in August of 2014, when thunderstorm winds topping 60 mph coupled with one-inch hail that caused \$150,000 in property damages. Community concerns about severe thunderstorms include property damage, power outages, and fire caused by lightning. Critical municipal records are protected by surge protectors. Most of the critical facilities in Alda have backup power generators. Approximately 25 percent of the power lines in the Village are buried. The community has a weather radio in the Village Office. There are several hazardous trees on personal property that need to be removed. This hazard will be mitigated with the proposed tree planting and maintenance program. Further mitigation actions include the provision of adequate public safe rooms and emergency shelters, the installation of surge protectors on critical facilities, a public education program, and improvement of available first responder equipment.

Is this hazard still of concern for your community? (circle one) Yes No
If no, please skip the following questions.

Section Seven | Village of Alda Community Profile

Have there been any changes since the last plan? Does this accurately describe the community's risk or concern related to this hazard? Please describe any recent events and their impacts on the community.

Are there any critical facilities in the community that still need backup generators?

Are your community's critical facilities fitted with hail resistant building materials?

What has the community done to mitigate risk to this hazard?

Severe Winter Storms

The most severe winter storm to occur in Alda in recent memory was in December of 2006. Half-inch ice deposits cause widespread tree damage and power outages, resulting in \$10,000,000 in property damages throughout central Nebraska. The local planning team is concerned that future severe winter storms will lead to more power outages and a loss of mobility for residents of the village. Approximately 25 percent of phone and power lines are buried in Alda. There are no snow routes in the village, but there is one snow fence in use on the north side of Schimmer Drive. The village Maintenance Department has sufficient equipment to remove snow including a truck, bobcat, and loader with a snow blade. Mitigation plans include public education and improvement of available first responder equipment.

Is this hazard still of concern for your community? (circle one) Yes No
If no, please skip the following questions.

Have there been any changes since the last plan? Does this accurately describe the community's risk or concern related to this hazard? Please describe any recent events and their impacts on the community.

Section Seven | Village of Alda Community Profile

What were the impacts from the extreme cold in February 2021 for your community?

Are snow removal resources still sufficient?

What has the community done to mitigate risk to this hazard?

Tornadoes and High Winds

In 1974, a tornado passed through Alda, damaging homes and businesses. The Village is covered by two warning sirens, one on the south and one on the north sides of town. The County Emergency Manager offers text alerts. There is one public safe room at the Community Center, but it is not FEMA-certified. Education outreach occurs through the schools during October Safe Month and at the annual community festival, Alda Days. In the event of a future disaster, Mutual Aid Agreements are in place with Rural Hall County, Wood River, Doniphan, Grand Island, Phillips, Chapman, Shelton, St. Libory, Cairo, and Aurora. Completed mitigation actions for tornadic events in 2016 included updating home standards to ensure that they are well anchored. Future mitigation plans include providing adequate public safe rooms, developing a tree planting and maintenance program, providing emergency shelters for vulnerable populations, identifying existing storm shelters, and improving the available first responder equipment.

Is this hazard still of concern for your community? (circle one) Yes No
If no, please skip the following questions.

Have there been any changes since the last plan? Does this accurately describe the community's risk or concern related to this hazard? Please describe any recent events and their impacts on the community.

Section Seven | Village of Alda Community Profile

What has the community done to mitigate risk to this hazard?

New Hazards of Top Concern

The following hazards are evaluated in the regional Hazard Mitigation Plan. From this list, please circle any other hazards which your community is pursuing mitigation efforts for. If top concerns are already identified for your community, please skip this section.

- | | | |
|-----------------------------------|------------------------------------|---------------------------------|
| <i>Animal & Plant Disease</i> | <i>Flooding</i> | <i>Public Health Emergency</i> |
| <i>Dam Failure</i> | <i>Grass/Wildfires</i> | <i>Severe Thunderstorms</i> |
| <i>Drought</i> | <i>Hazardous Materials Release</i> | <i>Severe Winter Storms</i> |
| <i>Earthquakes</i> | <i>Levee Failure</i> | <i>Terrorism</i> |
| <i>Extreme Heat</i> | | <i>Tornadoes and High Winds</i> |

In the space below please provide a description for additional hazards including past event descriptions, injuries, fatalities, property/crop damages, and current or future mitigation efforts.

***New Hazard: _____
Description of why this hazard is a concern:***

***New Hazard: _____
Description of why this hazard is a concern:***

Section Seven | Village of Alda Community Profile

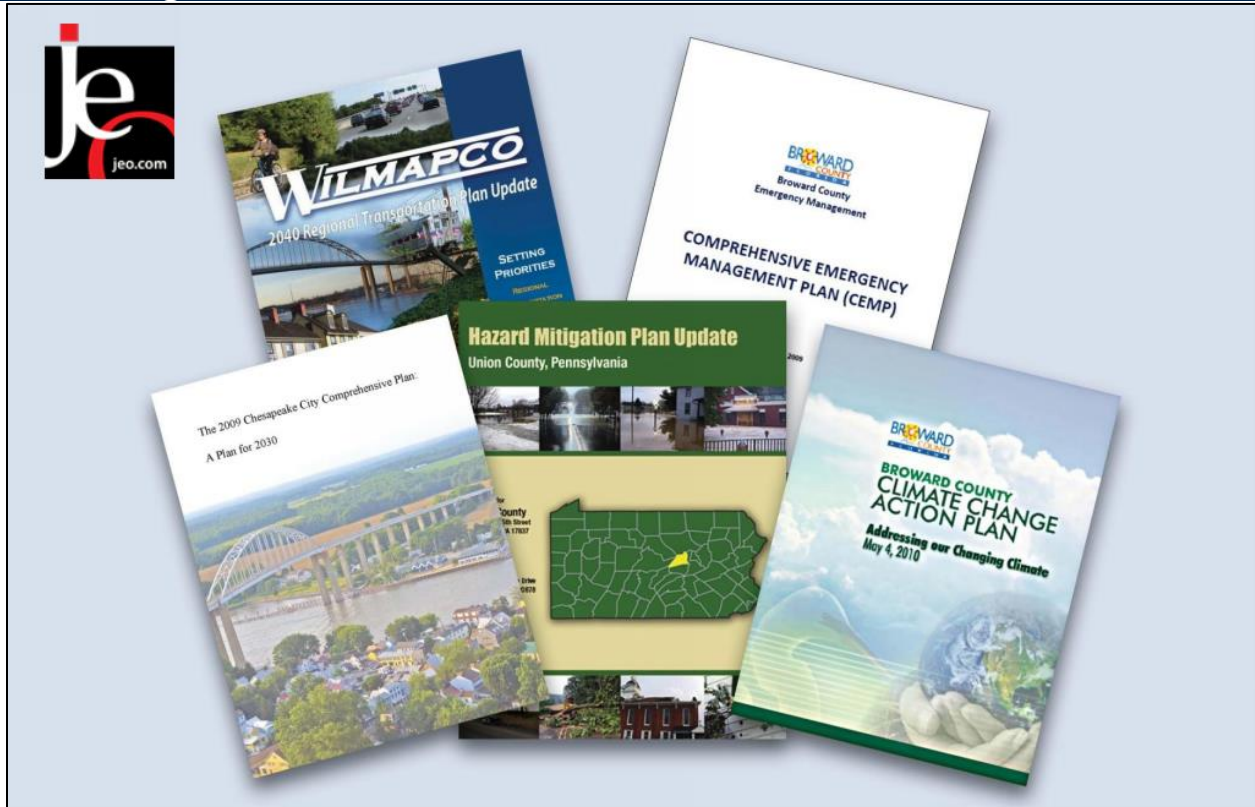
Mitigation Strategy

Information will be added for the Round 2 meeting.

Plan Maintenance

Information will be added for the Round 2 meeting.

Plan Integration Worksheet



Central Platte NRD

HAZARD MITIGATION PLAN

PLAN INTEGRATION WORKSHEET

JEO CONSULTING GROUP
AUGUST 2021

Name(s): _____ Jurisdiction: _____

INTRODUCTION

Thank you for participating in the Central Platte NRD Hazard Mitigation Plan.

The Hazard Mitigation Plan determines vulnerabilities to natural and human-caused hazards in your jurisdiction, then identifies mitigation projects to reduce or eliminate those vulnerabilities. An approved HMP is a requirement of the Federal Emergency Management Agency (FEMA) for jurisdictions to become eligible for Hazard Mitigation Assistance grants.

FEMA encourages jurisdictions to integrate their hazard mitigation plan with other planning mechanisms, such as their building codes, comprehensive plans, zoning ordinances, etc. to ensure that plans across a jurisdiction are consistent and reflect overall goals.

This worksheet will identify the ways that other plans in your jurisdiction are, or could be, aligned with hazard mitigation principles. The information you provide will be used to develop the plan integration section of your jurisdictional profile.

Please complete these worksheets and return them to JEO Consulting Group by Monday September 20, 2021.

Email: kdietrich@jeo.com

Phone: 402-742-7213

Fax: 402-435-4110

Mail: JEO Consulting Group
Attn: Karl Dietrich
2000 Q Street Suite 500
Lincoln, NE 68503

STEP 1

Please complete the following table.

Which of these plans/ordinances does your jurisdiction have?

Plan/Ordinance	Yes/No	Year of most recent update
Comprehensive Plan		
Zoning Ordinance		
Subdivision Regulations		
Floodplain Regulations/Ordinance		
Building Code		
Capital Improvements Plan		
Wellhead Protection Plan		
Water System Emergency Response Plan		
Community Wildfire Protection Plan		
Other:		
Other:		
Other:		

For any additional plans your community has, e.g. Drought Management Plan, Evacuation Plan, Stormwater Management Plan, etc., please send JEO a copy.

STEP 2

For the plans/ordinances which your community has, please complete the relevant pages in this worksheet. **You do not have to complete the sections for plans/ordinances which your community does not have.**

COMPREHENSIVE PLAN

Does the comprehensive plan discuss natural hazards? Yes No

If yes, which hazards are discussed?

Does your comprehensive plan:

Contain goals/objectives aimed at Safe Growth: Yes No In future update

Direct development away from the floodplain: Yes No In future update

Direct housing away from chemical storage facilities: Yes No In future update

Direct housing and vulnerable populations away from major transportation routes: Yes No In future update

Encourage infill development: Yes No In future update

Encourage "clustering of development" in sensitive areas: Yes No In future update

Encourage elevation of structures located in the floodplain: Yes No In future update

Identify areas that need emergency shelters: Yes No In future update

Encourage preservation of open space in hazard-prone areas: Yes No In future update

Is there a plan or timeline to update your comprehensive plan? Yes No

If yes, explain the plan or timeline.

BUILDING CODE

If the building codes are based on the International Building Codes, what year/version is in effect?

Have you made any amendments to the Code? If yes, please describe.

ZONING ORDINANCE / FLOODPLAIN ORDINANCE / SUBDIVISION REGULATIONS

Is there a plan or timeline to update your Zoning Ordinance / Floodplain Ordinance / Subdivision Regulations?

Yes No

If yes, explain the plan or timeline.

Do the Zoning Ordinance / Floodplain Regulations / Subdivision Regulations:

Contain floodplain maps? Yes No In future update

Prohibit development within the floodplain? Yes No In future update

Discourage development in the floodplain? Yes No In future update

Limit population density in the floodplain? Yes No In future update

Identify floodplain areas as parks or open spaces? Yes No In future update

Require **more** than one foot of elevation above Base Flood Elevation in the floodplain? Yes No In future update

Discourage housing and vulnerable populations near chemical storage sites? Yes No In future update

Discourage housing and other vulnerable populations along major transportation routes? Yes No In future update

Consider wildfire and the wildland urban interface? Yes No In future update

Do subdivision regulations allow density transfers in hazard areas? Yes No In future update

Do the subdivision regulations restrict subdivision of land within or adjacent to the floodplain? Yes No In future update

Include well setback requirements? Yes No In future update

Include the ability to implement water restrictions? Yes No In future update

WELLHEAD PROTECTION PLAN / WATER SYSTEM EMERGENCY RESPONSE PLAN / COMMUNITY WILDFIRE PROTECTION PLAN

Please provide an electronic copy or a link of the plan(s) to JEO.

CAPITAL IMPROVEMENT PLAN

Is there a plan or timeline to update your Capital Improvement Plan? Yes No

If yes, explain the plan or timeline.

Does the Capital Improvement Plan include:

- Stormwater projects? Yes No In future update
- Upsizing of culverts and drainage structures? Yes No In future update
- Upgrading storm sewer systems? Yes No In future update
- Improving transportation routes for drainage? Yes No In future update
- Widening roadways that would improve evacuations? Yes No In future update
- Bridge improvements? Yes No In future update
- Installing new municipal wells? Yes No In future update
- Upsizing water distribution pipes? Yes No In future update
- Installing water meters for residential structures? Yes No In future update
- Updating electrical distribution system? Yes No In future update
- Burying powerlines? Yes No In future update
- Installing emergency generators in critical facilities? Yes No In future update
- Constructing a new fire hall? Yes No In future update
- Constructing a new police headquarters? Yes No In future update
- Constructing a new public works facility? Yes No In future update
- Constructing a new community center? Yes No In future update
- Constructing a community storm shelter? Yes No In future update
- Constructing a new water treatment facility? Yes No In future update

What other types of projects are presently included in the capital improvement plan?

Round 2 Community Profile with Questions

Community Profile

Village of Alda

Central Platte NRD Hazard Mitigation Plan

2022

Name(s): _____

Date: _____

Worksheets Due By: _____

Please answer the questions in red italics. Your responses are critical for completing this Community Profile. If you are unsure of any questions, think of who could supply the information, please provide their name and position in the community.

Completed Community Profiles and other worksheets can be returned to JEO Consulting Group, Attn: Karl Dietrich, 2000 Q Street Ste 500, Lincoln, NE 68503 or kdietrich@jeo.com. If you have any questions, please call 402-742-7213.

Section Seven | Village of Alda Community Profile

Local Planning Team

Table ALD.1: Alda Local Planning Team

Name	Title	Jurisdiction
Ramora Schafer	Clerk/Treasurer	Village of Alda

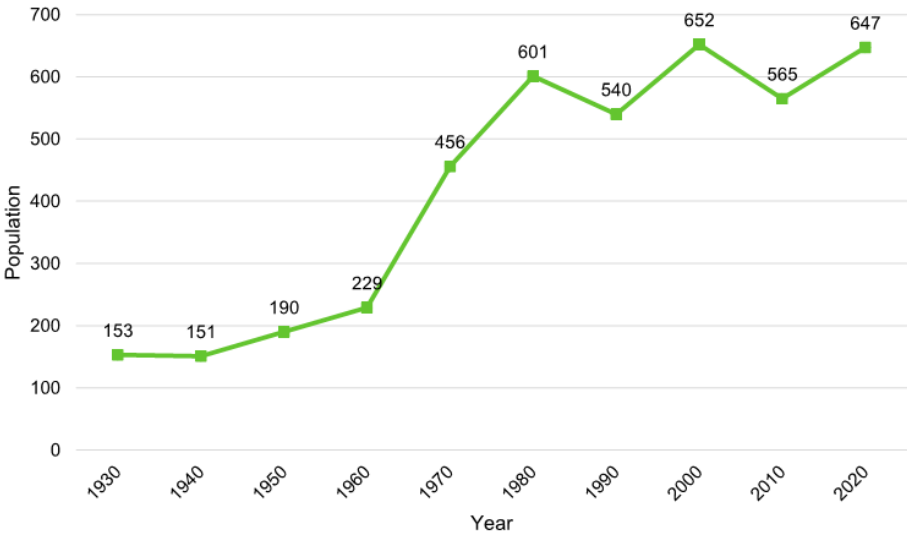
Location and Geography

The Village of Alda is in the center of Hall County and covers an area of 0.35 square miles. The major waterway in the area is the Wood River.

Demographics

The following figure displays the historical population trend for the Village of Alda. This figure indicates that the population of Alda has been increasing since 2010 to 647 people in 2020. Increasing populations are associated with increased hazard mitigation and emergency planning requirements for development. Increasing populations can also contribute to increasing tax revenues, allowing communities to pursue additional mitigation projects. Alda’s population accounted for 1% of Hall County’s population in 2020.¹

Figure ALD.1: Population 1930 - 2020



Source: U.S. Census Bureau

¹ United States Census Bureau. "2020 Decennial Census: P1: DEC Redistricting Data." <https://data.census.gov/cedsci/>.

Section Seven | Village of Alda Community Profile

Figure ALD.2: Village of Alda

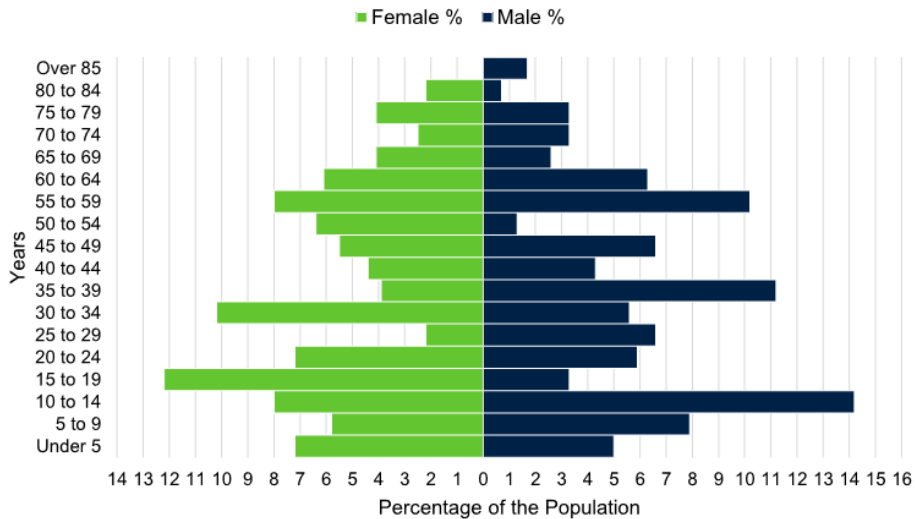


Section Seven | Village of Alda Community Profile

The young, elderly, and minority populations may be more vulnerable to certain hazards than other groups. Looking at Alda’s population:

- **7.8% is non-white.** Since 2010, Alda grew more ethnically diverse. In 2010, 6.4% of the Alda’s population was non-white. By 2019, 7.8% was non-white.²
- **34.5 median age.** The median age of Alda was 34.5 years in old 2019. The population grew older since 2010, when the median age was 33.5.³

Figure ALD.3: Alda’s Population Pyramid



The figure above shows Alda’s population percentage broken down by sex and five-year age groups. Alda’s population is younger with a much higher percentage of the population below 40 years of age. This likely indicates a growing population in the years to come.

Employment and Economics

Low-income populations, long distance commuters, and the unemployed may be more vulnerable to certain hazards than other groups. Alda’s population has:

- **5% of people living below the poverty line.** The poverty rate (5%) in the Village of Alda was lower than the state’s poverty rate (7.2%) in 2019.⁴
- **\$49,514 median household income.** Alda’s median household income in 2019 (\$49,514) was \$11,000 lower than the state (\$61,439).⁴
- **3.8% unemployment rate.** In 2019 Alda had a higher unemployment rate (3.8%) when compared to the state (2.3%).⁴

2 United States Census Bureau. “2019 Census Bureau American Community Survey: DP05: ACS Demographic and Housing Estimates.” <https://data.census.gov/cedsci/>.

3 United States Census Bureau. “2019 Census Bureau American Community Survey: S0101: Age and Sex.” <https://data.census.gov/cedsci/>.

4 United States Census Bureau. “2019 Census Bureau American Community Survey: DP03: Selected Economic Characteristics.” <https://data.census.gov/cedsci/>.

Section Seven | Village of Alda Community Profile

- **13.2% of workers commuted 30 minutes or more to work.** Fewer workers in Alda commuted 30 minutes or more to work than compared to workers commuting less than 15 minutes (13.2% compared to 41.6%).⁵

Major Employers

The major employers in the community are Hornady, PMI, Traid, Futek, Bullet Weights, and Merrick Machines. Many of the residents in Alda commute to neighboring communities such as Grand Island, Kearney, and Wood River for work.

Housing

The age of housing may indicate which housing units were built prior to the development of state building codes. Vacant housing stock may also be more vulnerable to hazard events if it is poorly maintained. Unoccupied housing may also suggest that future development may be less likely to occur. Communities with a substantial number of mobile homes may be more vulnerable to the impacts of high winds, tornadoes, and severe thunderstorms if those homes are not anchored correctly. The local planning team indicated that there are mobile homes located at Chestnut Street, Venus Street, 4th Street, and on Highway 30. Renter-occupied housing depends on the initiative of landlords for proper maintenance and retrofitting to be resilient to disasters. They are less likely than homeowners to have flood insurance, or to know their risks to flooding and other hazards.

- **25.4% of housing built prior to 1970.** Alda has a smaller share of housing built prior to 1970 than the state (25.4% compared to 46%).⁶
- **9.3% of housing units vacant.** Since 2010, Alda’s vacancy rate decreased. In 2010 the vacancy rate was 11.2%. By 2019, 9.3% of housing units were vacant.⁶
- **35.8% mobile and manufacture housing.** The Village of Alda had a larger share of mobile and manufactured housing (35.8%) compared to the state (3.3%).⁶
- **20.6% renter-occupied.** The rental rate of Alda was 20.6% in 2019. The percentage went down since 2010, when renter occupied housing was at 21%.⁶

Governance

A community’s governance indicates the number of boards or offices that may be available to help implement hazard mitigation actions. The Village of Alda is governed by a Board Chairperson and a four-member village board; other governmental offices and departments that may be involved in implementing hazard mitigation initiatives are listed below.

- Clerk/Treasurer
- Planning Commission
- Housing Authority
- Water and Sewer Department
- Volunteer Fire Department
- Village Board of Trustees

⁵ United States Census Bureau. "2019 Census Bureau American Community Survey: S0802: Means of Transportation to Work by Selected Characteristics." <https://data.census.gov/cedsci/>.

⁶ United States Census Bureau. "2019 Bureau American Community Survey: DP04: Selected Housing Characteristics." <https://data.census.gov/cedsci/>.

Section Seven | Village of Alda Community Profile

Capability Assessment

The capability assessment consisted of a review of local existing policies, regulations, plans, and programs with hazard mitigation capabilities. The following tables summarize the community's planning and regulatory capability; administrative and technical capability; fiscal capability; educational and outreach capability; and overall capability to implement mitigation projects.

Table ALD.3: Capability Assessment

Survey Components/Subcomponents		Yes/No
Planning & Regulatory Capability	Comprehensive Plan	Yes
	Capital Improvements Plan	No
	Economic Development Plan	No
	Local Emergency Operations Plan	Yes
	Floodplain Management Plan	Yes
	Storm Water Management Plan	No
	Zoning Ordinance	Yes
	Subdivision Regulation/Ordinance	Yes
	Floodplain Ordinance	Yes
	Building Codes	Yes
	National Flood Insurance Program	Yes
	Community Rating System	No
	Other (if any)	-
Administrative & Technical Capability	Planning Commission	Yes
	Floodplain Administration	Yes
	GIS Capabilities	Yes - County
	Chief Building Official	No
	Civil Engineering	Yes
	Local Staff Who Can Assess Community's Vulnerability to Hazards	Yes
	Grant Manager	No
	Mutual Aid Agreement	Yes
	Other (if any)	-
Fiscal Capability	Capital Improvement Plan/ 1- & 6-Year plan	Yes
	Applied for grants in the past	Yes
	Awarded a grant in the past	Yes
	Authority to Levy Taxes for Specific Purposes such as Mitigation Projects	Yes
	Gas/Electric Service Fees	No
	Storm Water Service Fees	No
	Water/Sewer Service Fees	Yes
	Development Impact Fees	No
	General Obligation Revenue or Special Tax Bonds	Yes
	Other (if any)	-

Section Seven | Village of Alda Community Profile

Survey Components/Subcomponents		Yes/No
Education & Outreach Capability	Local citizen groups or non-profit organizations focused on environmental protection, emergency preparedness, access and functional needs populations, etc. Ex. CERT Teams, Red Cross, etc.	Yes
	Ongoing public education or information program (e.g., responsible water use, fire safety, household preparedness, environmental education)	Yes
	Natural Disaster or Safety related school programs	Yes
	StormReady Certification	No
	Firewise Communities Certification	No
	Tree City USA	No
	Other (if any)	-

Overall Capability	Limited/Moderate/High
Financial resources to implement mitigation projects	Moderate
Staff/expertise to implement projects	Moderate
Public support to implement projects	Moderate
Time to devote to hazard mitigation	Limited

Plan Integration

Alda has several planning documents that discuss or relate to hazard mitigation. Each plan is listed below along with a short description of how it is integrated with the hazard mitigation plan. The village will seek out and evaluate any opportunities to integrate the results of the current hazard mitigation plan into other planning mechanisms and updates.

Building Code (2018)

The Building Codes for Alda were recently updated in 2020 and are based on the 2018 International Building Codes. The Codes allow for raingardens in residential areas and require the use of fire-resistant building materials.

Comprehensive Plan (2003)

The comprehensive plan is designed to guide the future actions and growth of the city. It directs development away from the floodplain and directs housing away from chemical storage facilities and major transportation routes. The plan also encourages preservation of open space in hazard-prone areas and allows for emergency access to all areas of town. The village plans to update the comprehensive plan sometime between 2022 and 2023.

Hall County Local Emergency Operations Plan (2020)

Alda is an annex in the Hall County Local Emergency Operations Plan (LEOP). The LEOP establishes standardized policies, plans, guidelines, and procedures for emergency resources and governmental entities to respond and recover when a disaster event occurs. It contains information regarding direction and control, communications and warning, damage assessment, emergency public information, evacuation, fire services, health and human services, law

Section Seven | Village of Alda Community Profile

enforcement, mass care, protective shelters, and resource management. This plan is updated every five years.

Floodplain Ordinance (2021), Zoning Ordinance (2021), and Subdivision Regulations (2021)

The city's floodplain ordinance, zoning ordinance, and subdivision regulations outline where and how development should occur in the future. These documents prohibit development in the floodplain and discourage housing near chemical sites and major transportation routes. There are currently no plans to update these documents.

Water System Emergency Response Plan (2021)

A water system emergency response plan serves as a guideline for water operators and city administration to minimize the disruption of normal services to consumers and to provide public health protection during an emergency event. The document identifies several natural and human-caused events and discusses the water system's response during those events.

1- & 6-Year Street and Transportation Improvement Plan (2021)

Alda has a 1- & 6-Year Street Plan and Transportation Improvement Plan that is reviewed and updated annually. The plan includes many hazard mitigation projects such as stormwater projects, upsizing of culverts and drainage structures, and upgrading and regular maintenance of the storm sewer system. It also includes installing street aprons to facilitate drainage, improvements to transportation routes for drainage, bridge improvements, updating electrical distribution system, and installing emergency generators in critical facilities.

Please provide a copy of your Floodplain Management Plan.

Future Development Trends

Over the past five years, there have been some new businesses in the community. There has been no new housing developed and no housing planned for the next five years.

Community Lifelines

Transportation

Alda's major transportation corridors include US Highway 30, which has an average of 6,490 vehicles daily, 475 of which are trucks.⁷ The Village has one Union Pacific line traveling southwest to northeast on the southern edge of the community. The local planning team noted that no major transportation events have occurred locally. Transportation information is important to hazard mitigation plans because it suggests possible evacuation corridors in the community, as well as areas more at risk of transportation incidents.

Hazardous Materials

According to the Tier II System reports submitted to the Nebraska Department of Environment and Energy, there are six chemical storage sites within or near Alda which house hazardous materials. In the event of a chemical spill, the local fire department and emergency response may be the first to respond to the incident.

⁷ Nebraska Department of Roads. 2018. "Interactive Statewide Traffic Counts Map." [map]. <https://gis.ne.gov/portal/apps/webappviewer/index.html?id=bb00781d6653474d945d51f49e1e7c34>.

Section Seven | Village of Alda Community Profile

Table ALD.4: Chemical Storage Sites

Name	Address	Located in Floodplain?
Bullet Weights Inc	122 S Apollo St	N
Hornady/Alda LLC	108 S Apollo St	N
Hornady Manufacturing Company	8350 W Old Potash Hwy	N
Island Supply Welding Co	4920 W US Highway 30	N
Platte Valley Energetics LLC	8318 W Old Potash Hwy	N

Source: Nebraska Department of Environment and Energy⁸

Health and Medical Facilities

There are no medical and health facilities located within the community.

Critical Facilities

Each participating jurisdiction identified critical facilities vital for disaster response, providing shelter to the public, and essential for returning the jurisdiction’s functions to normal during and after a disaster per the FEMA Community Lifelines guidance. Critical facilities were identified during the original planning process and updated by the local planning team as part of this plan update. The following table and figure provide a summary of the critical facilities for the jurisdiction.

Although they may not be listed in the table below, critical infrastructure also includes power infrastructure, cell towers, alert sirens, water infrastructure, wastewater infrastructure, and roadways.

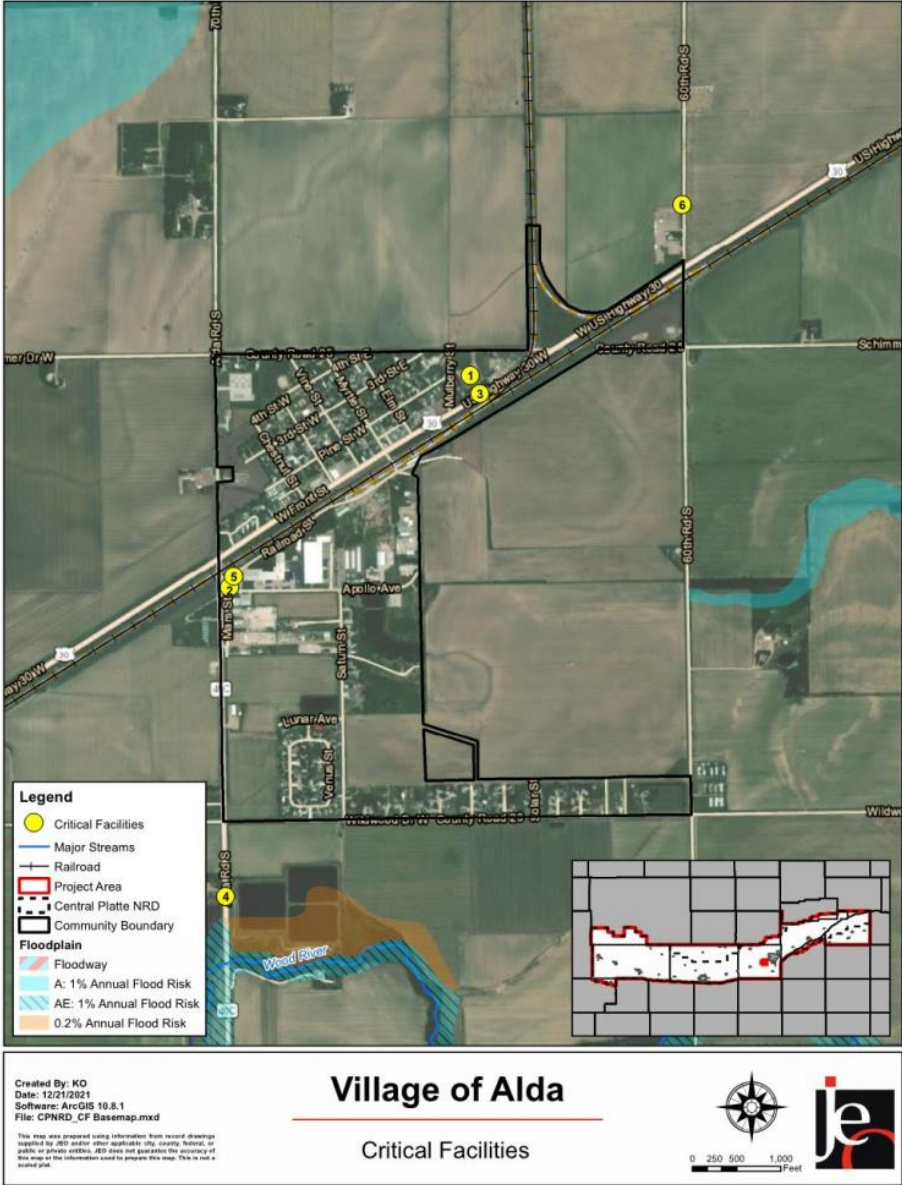
Table ALD.5: Critical Facilities

CF Number	Name	Mass Care (Y/N)	Generator (Y/N)	Floodplain (Y/N)
1	Emergency Operations Center	N		N
2	Fire Hall	N	Y – portable	N
3	Village Hall/Community Center	Y	Y	N
4	Wastewater Lagoon	N	N	Y (0.2%)
5	Water Tower and Well	N	N	N
6	Well	N	Y	N

⁸ Nebraska Department of Environment and Energy. "Search Tier II Data." Accessed June 2021.

Section Seven | Village of Alda Community Profile

Figure ALD.3: Critical Facilities



Parcel Improvements and Valuation

The planning team acquired GIS parcel data from the County Assessor to analyze the location, number, and value of property improvements (e.g. buildings, garages, sheds etc.) at the parcel level. The data did not contain the number of structures on each parcel. A summary of the results of this analysis is provided in the following tables.

Table ALD.6: Parcel Improvements and Value in the 1% Annual Flood Risk Area

Number of Improvements	Total Improvement Value	Number of Improvements in Floodplain	Value of Improvements in Floodplain	Percentage of Improvements in Floodplain
288	\$24,194,435	0	\$0	0%

Source: County Assessor, 2021

Table ALD.7: Parcel Improvements and Value in the 0.2% Annual Flood Risk Area

Number of Improvements	Total Improvement Value	Number of Improvements in Floodplain	Value of Improvements in Floodplain	Percentage of Improvements in Floodplain
288	\$24,194,435	0	\$0	0%

Source: County Assessor, 2021

Historical Occurrences

See the Hall County profile for historical hazard events, including the number of events, damage estimates, and any fatalities or injuries.

Hazard Prioritization

The hazards discussed in detail below were either identified in the previous HMP and determined to still be of top concern or were selected by the local planning team from the regional list as relevant hazards for the community. The local planning team prioritized the selected hazards based on historical hazard occurrences, potential impacts, and the community’s capabilities. For more information regarding regional hazards, please see *Section Four: Risk Assessment*.

Flooding

The village identified flooding as a top hazard of concern as they have a history of flooding. The local planning team indicated that one rain event caused water along Highway 30 to come down the railroad and highway. In 2005, torrential rainfall of 5-11 inches on May 11 and 12 led to widespread flash flooding throughout the County. Alda was part of an area that was declared a federal disaster area. Wood River near Alda, which had been dry for three years, tied a record with a crest of 12.2 feet early on the 12th. Records also indicate that Wood River flooded in 1967, 1968, and 1969, although no damage estimates are available. Flood crest data indicates that the June 1968 flood was 11.7 feet and the March 1969 event was 12 feet. The National Centers for Environmental Information reported one flood event for Alda on February 20, 2007. The Village of Alda has flood risk areas to the south and east of the Village. Alda is a member of the NFIP. To mitigate against this hazard, the village has created a temporary berm.

Hazardous Materials Release

The Village of Alda is concerned about chemical spills on the Union Pacific railway and Hwy 30. Gasoline, oil, anhydrous ammonia, and other unknown chemicals are regularly transported on these routes. There are no significant chemical spills reported by PHMSA. Critical facilities vulnerable to a chemical spill during transportation include the village office and community center, the water tower, fire hall, water booster station, and wastewater lagoons. Mitigation plans include identifying an emergency shelter for vulnerable populations, participating in hazardous

Section Seven | Village of Alda Community Profile

spill emergency exercises, providing public education on the hazards associated with chemical spills, and improving available first responder equipment.

Severe Thunderstorms

Alda experiences severe summer thunderstorms annually. The worst of these was in August of 2014, when thunderstorm winds topping 60 mph coupled with one-inch hail that caused \$150,000 in property damages. According to NCEI data, there have been 25 severe thunderstorm events in the village that have caused \$645,000 in property damages. Community concerns about severe thunderstorms include property damage, power outages, and fire caused by lightning. Critical municipal records are protected by surge protectors. Most of the critical facilities in Alda have backup power generators. Approximately 25 percent of the power lines in the Village are buried. The community has a weather radio in the Village Office. There are several hazardous trees on personal property that need to be removed. This hazard will be mitigated with the proposed tree planting and maintenance program. Further mitigation actions include the provision of adequate public safe rooms and emergency shelters, the installation of surge protectors on critical facilities, a public education program, and improvement of available first responder equipment.

Severe Winter Storms

The most severe winter storm to occur in Alda in recent memory was in December of 2006. Half-inch ice deposits cause widespread tree damage and power outages, resulting in \$10,000,000 in property damages throughout central Nebraska. During the extreme cold event in February 2021, the village experiences a power outage but has minimal damage from the storm. The local planning team is concerned that future severe winter storms will lead to more power outages and a loss of mobility for residents of the village. Approximately 25 percent of phone and power lines are buried in Alda. There are no snow routes in the village, but there is one snow fence in use on the north side of Schimmer Drive. The village maintenance department has sufficient equipment to remove snow including a truck, bobcat, and loader with a snow blade. Mitigation plans include public education and improvement of available first responder equipment.

Tornadoes and High Winds

In 1974, a tornado passed through Alda, damaging homes and businesses. The Village is covered by two warning sirens, one on the south and one on the north sides of town. The County Emergency Manager offers text alerts. There is one public safe room at the Community Center, but it is not FEMA-certified. Education outreach occurs through the schools during October Safe Month and at the annual community festival, Alda Days. In the event of a future disaster, Mutual Aid Agreements are in place with Rural Hall County, Wood River, Doniphan, Grand Island, Phillips, Chapman, Shelton, St. Libory, Cairo, and Aurora. Completed mitigation actions for tornadic events in 2016 included updating home standards to ensure that they are well anchored. Future mitigation plans include providing adequate public safe rooms, developing a tree planting and maintenance program, providing emergency shelters for vulnerable populations, identifying existing storm shelters, and improving the available first responder equipment.

Mitigation Strategy

Alda's municipal funds are limited to maintaining current facilities and systems and have stayed the same over recent years. Currently a large portion of funds are dedicated to a community center addition in the village.

Please review the following mitigation actions identified in the previous HMP, make any changes needed, and fill in missing information. Mark if each action has been completed, kept, or should be removed and describe the current status of the action.

Section Seven | Village of Alda Community Profile

Review of Actions

Mitigation Action	Community Education and Awareness
Description	Obtain or develop hazard education materials; conduct multi-faceted public education; distribute fact sheets or maps at community events, public schools, other venues and to public and private communication systems; conduct scheduled siren/warning system tests; prepare educational materials listing safe rooms and shelters and evacuation plans; distribute educational materials listing safe rooms and shelters; purchase equipment such as overhead projectors and laptops to facilitate presentation of information.
Hazard(s) Addressed	All Hazards
Estimated Cost	\$3,000+
Local Funding	General Fund
Timeline	1 Year
Priority	High
Lead Agency	Village Board, Emergency Management
UPDATE (CIRCLE ONE)	Completed Keep Remove
Status	What is the current status of this project?

Mitigation Action	Emergency Exercise: Hazardous Spill
Description	Utilize exercise to prepare for potential explosions or hazardous spills; ensure that nearby businesses and residents have appropriate plans in place.
Hazard(s) Addressed	Hazardous Materials Release
Estimated Cost	\$5,000+
Local Funding	General Fund
Timeline	1 Year
Priority	High
Lead Agency	Village Board, Emergency Management
UPDATE (CIRCLE ONE)	Completed Keep Remove
Status	What is the current status of this project?

Section Seven | Village of Alda Community Profile

Mitigation Action	Safe Rooms and Storms Shelters
Description	Identify and evaluate existing safe rooms and/or storm shelters; improve and/or construct safe rooms and/or storm shelters; design and construct storm shelters and safe rooms in highly vulnerable areas such as mobile home parks, campgrounds, schools, etc.
Hazard(s) Addressed	Tornadoes and High Winds, Severe Thunderstorms
Estimated Cost	\$150/sf for Retrofit, \$300/sf for New Construction
Local Funding	General Fund
Timeline	2-5 Years
Priority	High
Lead Agency	Village Board
UPDATE (CIRCLE ONE)	Completed Keep Remove
Status	What is the current status of this project?

Mitigation Action	Storm Shelter Identification
Description	Identify any existing private or public storm shelters.
Hazard(s) Addressed	Tornadoes and High Winds, Severe Thunderstorms
Estimated Cost	Staff Time
Local Funding	Staff Time
Timeline	2-5 Years
Priority	High
Lead Agency	Village Board, Emergency Management
UPDATE (CIRCLE ONE)	Completed Keep Remove
Status	What is the current status of this project?

Section Seven | Village of Alda Community Profile

Mitigation Action	Surge Protectors
Description	Purchase and install surge protectors on sensitive equipment in critical facilities.
Hazard(s) Addressed	Severe Thunderstorms, Severe Winter Storms
Estimated Cost	\$25 per Unit
Local Funding	General Fund
Timeline	1 Year
Priority	High
Lead Agency	Village Maintenance

UPDATE (CIRCLE ONE) **Completed** **Keep** **Remove**

Status	What is the current status of this project?
---------------	---

Mitigation Action	Tree Planting Assistance
Description	Educate public on appropriate tree planning and establish an annual tree trimming program to assist low income and elderly residents; develop tree planting and maintenance guidelines.
Hazard(s) Addressed	Tornadoes and High Winds, Severe Thunderstorms
Estimated Cost	\$500
Local Funding	General Fund, NRD Cost Share
Timeline	2-5 Years
Priority	High
Lead Agency	Village Board

UPDATE (CIRCLE ONE) **Completed** **Keep** **Remove**

Status	What is the current status of this project?
---------------	---

Section Seven | Village of Alda Community Profile

Mitigation Action	Update Emergency Response Equipment
Description	Improve emergency rescue and response equipment and facilities by providing additional or updating existing emergency response equipment (includes developing backup system for emergency vehicles and identifying and training additional personnel for emergency response).
Hazard(s) Addressed	All Hazards
Estimated Cost	
Local Funding	General Fund, Fire Department Funds
Timeline	2-5 Years
Priority	High
Lead Agency	Village Board, Fire Department
UPDATE (CIRCLE ONE)	Completed Keep Remove
Status	What is the current status of this project?

New Mitigation Actions

If there are additional mitigation actions your jurisdiction is interested in pursuing or interested in applying for grant funding, complete the table(s) below. Please fill out all rows.

For examples of mitigation actions, review the provided FEMA Handbook (https://www.fema.gov/sites/default/files/2020-06/fema-mitigation-ideas_02-13-2013.pdf) or reach out to a JEO Project Contact.

Mitigation Action Name			
Description			
Hazard(s) Addressed			
Estimated Cost			
Local Funding			
Timeline	1 Year	2-5 Years	5+ Years
Priority	High	Medium	Low
Lead Agency			
Status			

Section Seven | Village of Alda Community Profile

Mitigation Action Name			
Description			
Hazard(s) Addressed			
Estimated Cost			
Local Funding			
Timeline	1 Year	2-5 Years	5+ Years
Priority	High	Medium	Low
Lead Agency			
Status			

Mitigation Action Name			
Description			
Hazard(s) Addressed			
Estimated Cost			
Local Funding			
Timeline	1 Year	2-5 Years	5+ Years
Priority	High	Medium	Low
Lead Agency			
Status			

Section Seven | Village of Alda Community Profile

Plan Maintenance

Hazard Mitigation Plans should be living documents and updated regularly to reflect changes in hazard events, priorities, and mitigation actions. These updates are encouraged to occur after every major disaster event, alongside community planning documents (e.g., annual budgets and Capital Improvement Plans), during the fall before the HMA grant cycle begins, and/or prior to other funding opportunity cycles begin including CDBG, Water Sustainability Fund, Revolving State Fund, or other identified funding mechanisms.

When was your community profile last reviewed by the local planning team?

Date: _____

What revisions or changes were identified during the last review?

For your jurisdiction, what positions are responsible for reviewing and updating the community profile outside of the five-year update?

Position: _____

Position: _____

Position: _____

Please indicate how frequently your jurisdiction intends to review/revise the profile. (circle one)

Every 6 months

Annually

Bi-annually

How will your jurisdiction notify and involve the public in the plan review and revision? (For example, social media, website updates, letters to all residents, board/council meetings, etc.)