

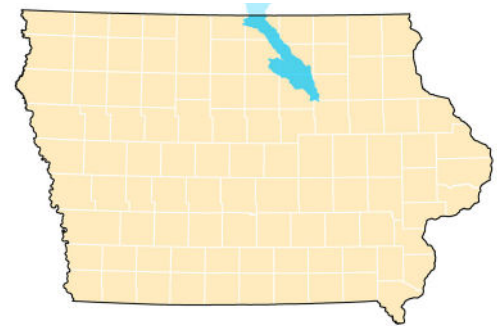
SHELL ROCK RIVER WATERSHED MANAGEMENT PLAN

Executive Summary



About the Watershed Plan

A watershed management plan was prepared for the Shell Rock River Watershed located in northeastern Iowa (shown in blue on map at right). This plan was sponsored by the Shell Rock River Management Coalition (WMC), a voluntary coalition of local counties, cities, and soil and water conservation districts (SWCDs) within the watershed.



- The plan identifies and prioritizes projects and activities to address flooding, water quality, and recreation across the watershed.
- The plan is non-regulatory and relies solely on cooperation between WMC members, farmers, and other stakeholders.
- It will be updated every 5 years to stay relevant and maintain eligibility for project funding.
- Water quality projects will rely on the voluntary adoption and use of Best Management Practices (BMPs), which are a broad set of conservation practices that help conserve soil and water resources. Examples include buffer strips, bioreactors, wetlands, manure management, and many others.

The plan contains a long-term implementation strategy (20-years), a short-term action plan (5-years), and an education plan.

COALITION MISSION STATEMENT

To assess and reduce flooding risks; repair, improve, and enhance the quality, appearance and recreational use of the Shell Rock River Watershed by encouraging municipal, public and private support and participation through education, conservation practices, and volunteering.



Chapter 1 of the plan provides a brief overview of the plan and history of the watershed.

View the full plan at www.jeo.com/shell-rock-river-wmc

Watershed Goals

Watershed goals, objectives, and action items were developed with input from the public, WMC partners, and watershed data.

#1: Flooding



Flood resiliency will be improved at the individual, community, and watershed level to prevent loss of life, reduce property losses, and avoid damage to infrastructure.

#2: Water Quality



Improve water quality to support all uses and ensure it meets state standards and goals.

#3: Recreation



Utilize recreation on the river to enhance local communities and connect the public with the watershed.

#4: Education



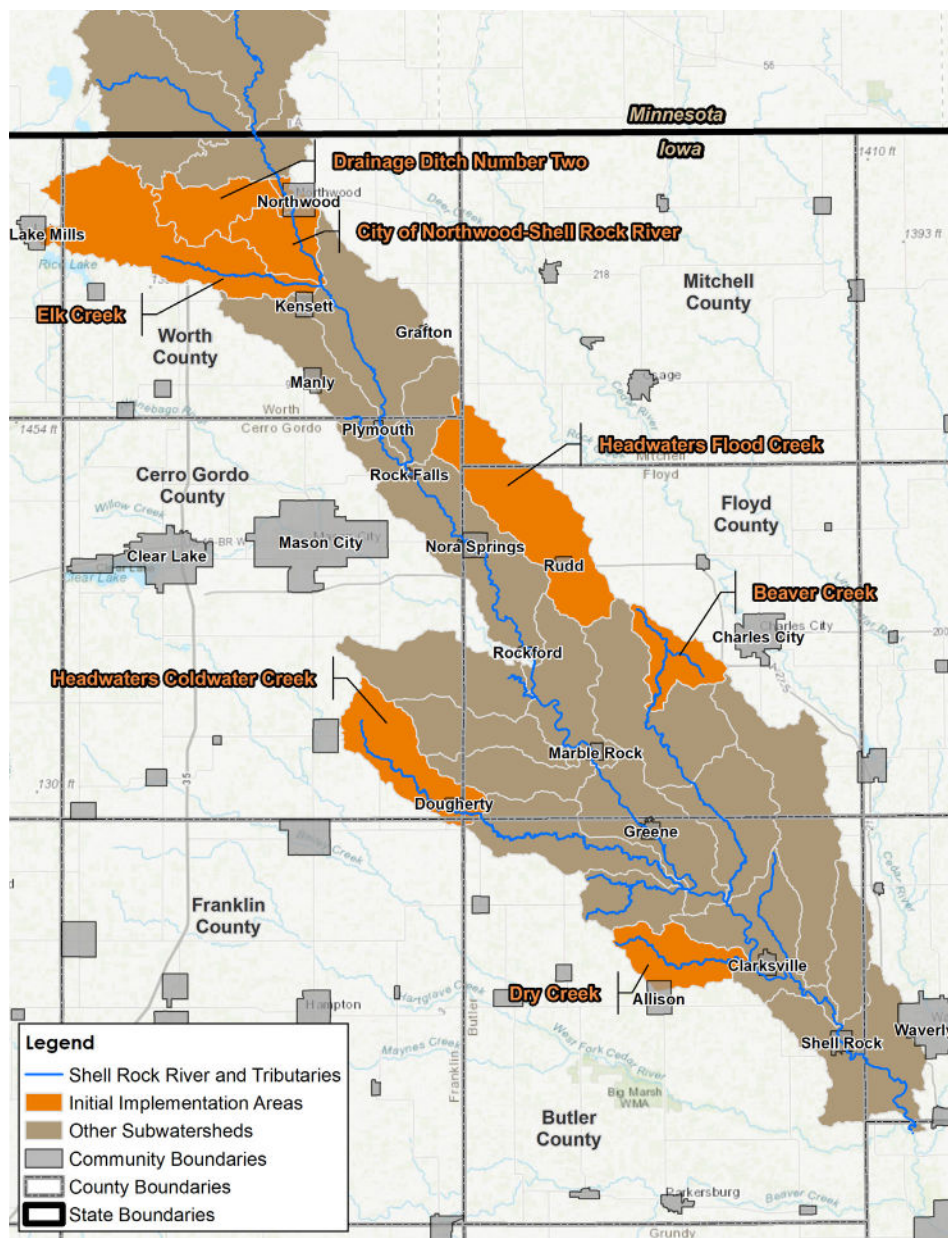
Create an informed, educated, and passionate public that works towards improving watershed management.



Chapters 2 and 3 outline an inventory and assessment of watershed data, including challenges and existing resources. Goals and objectives are identified in **Chapter 4**.

More Than a Plan: A Path Forward

The plan identifies initial project areas where BMPs could make a positive impact. Each project will consider the unique needs of each farmer, the landscape, and the budget of each partner.



PROJECTS AND ACTION ITEMS

The action plan identifies several projects and activities that should be completed over the next 5 years. Some of the initial projects include:

- Develop a strategy to fund and to hire a watershed coordinator
- Complete a water trail plan for the Shell Rock River
- Install educational signage along the river and throughout the watershed
- Expand WMC membership and partnerships
- Complete a hydrologic study for flood risks and mitigation strategies
- Expand stream monitoring throughout the watershed

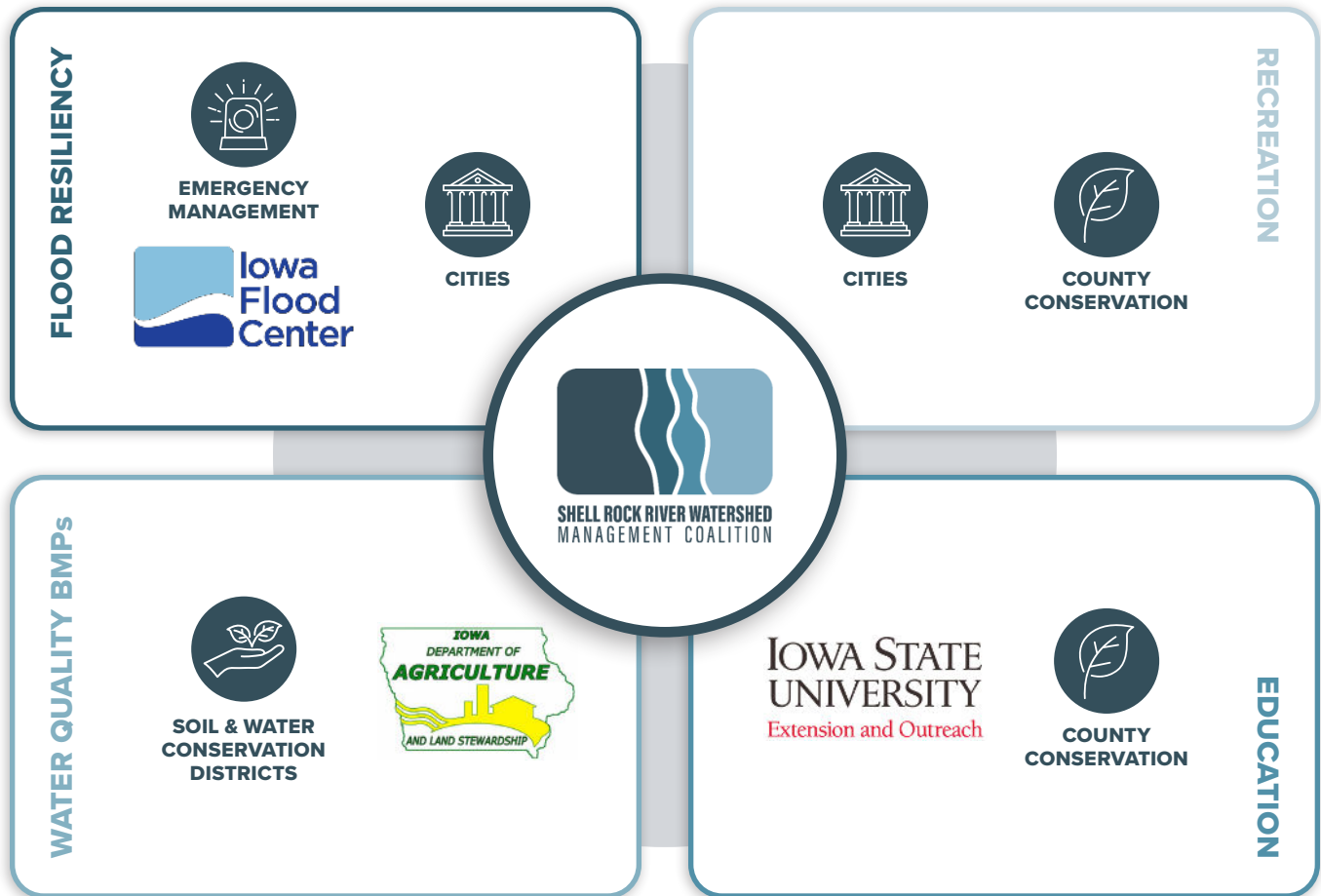


While **Chapter 5** outlines a long-term implementation strategy, **Chapter 6** provides a plan to involve and educate stakeholders throughout the watershed, and **Chapter 7** is a short-term action plan to provide initial focus.

A Coalition of Leaders

The SRRWMC has no direct authority to implement or fund projects. Therefore, individual WMC members and stakeholders are needed to lead implementation.

The graphic below summarizes which goals that each partner might take a lead in.



The WMC as a Coordinator

The WMC may not sponsor projects, but will help to coordinate efforts:

- Facilitate partnerships
- Identify project funding
- Coordinate public outreach
- Identify opportunities for locally-led watershed management

Expanded Partnerships

Partnerships between WMC members and other organizations is vital to:

- Provide technical assistance
- Improve funding opportunities
- Work together on mutually beneficial projects

