

# APPENDIX B PUBLIC MEETING MATERIALS AND WORKSHEETS

## **Contents:**

1. Example of Community Profile with Questions
2. Example of Plan Integration Worksheet

This Page Is Intentionally Blank

## Example of Community Profile with Questions

### Community Profile

# Village of Arthur

## Twin Platte NRD Multi-Jurisdictional Hazard Mitigation Plan Update

2021

Name(s): \_\_\_\_\_

Date: \_\_\_\_\_

**Worksheets Due By:** \_\_\_\_\_

*Please answer the questions in red italics. Your responses are critical for completing this Community Profile. If you are unsure of any questions, think of who could supply the information, please provide their name and position in the community.*

**Completed Community Profiles and other worksheets can be returned to Karl Dietrich, JEO Planner at: 2700 Fletcher Avenue, Lincoln, NE 68504 or [kdietrich@jeo.com](mailto:kdietrich@jeo.com). If you have any questions, please call 402-742-7213.**

Section Seven: Arthur Profile

**Local Planning Team**

**Table ATH.1: Arthur Local Planning Team**

Name	Title	Jurisdiction

**Location and Geography**

The Village of Arthur is in central Arthur County and covers an area of 198 acres. The closest waterbody to Arthur is Lake McConaughy, which is located 25 miles south of the village. Arthur is the county seat for Arthur County.

**Transportation**

Arthur’s major transportation corridors include State Highway 61 and 92. The most traveled route is Highway 61 with an average of 490 vehicles daily, 55 of which are trucks.<sup>1</sup> The village does not have a rail line traveling near or through the community. Transportation information is important to hazard mitigation plans because it suggests possible evacuation corridors in the community, as well as areas more at risk of transportation incidents.

- *In the 2016 HMP, Highway 61 was identified as the route of top concern for the community. Is this still of top concern? What other routes are also of concern?*
  
- *Are chemicals regularly transported along local routes? If yes, which chemicals and which routes?*
  
- *Have chemical spills occurred locally? Please describe the impacts.*

<sup>1</sup> Nebraska Department of Roads. 2018. "Interactive Statewide Traffic Counts Map." [map]. <https://gis.ne.gov/portal/apps/webappviewer/index.html?id=bb00781d6653474d945d51f49e1e7c34>.

<sup>2</sup> Twin Platte NRD Multi-Jurisdictional Hazard Mitigation Plan | 2021

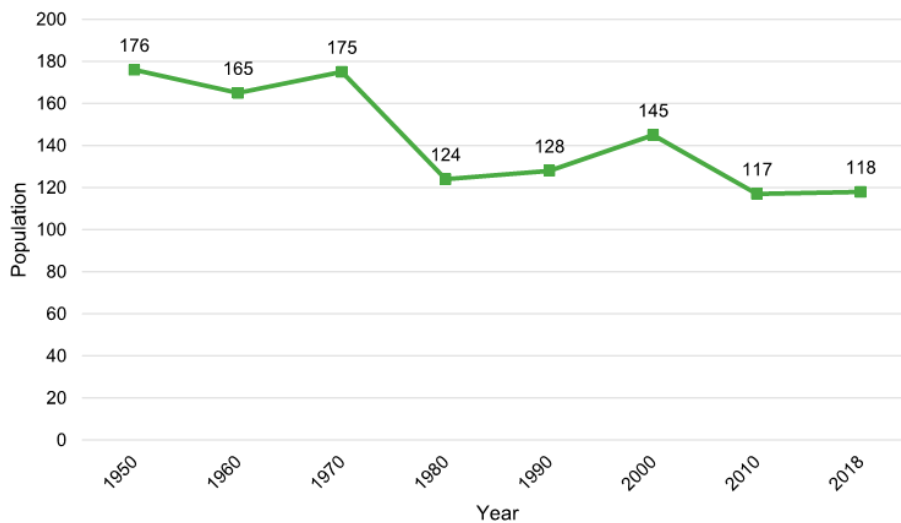
Section Seven: Arthur Profile

- *Have other significant transportation events occurred locally? Please describe.*
- *Are critical facilities located along main transportation routes? Which ones and where?*

**Demographics**

The Village of Arthur's population has been stable since 2010 at about 118 people. A stable population can lead to a stable tax base, which can make implementing mitigation actions easier. Arthur's population accounted for 28.2% of Arthur County's population in 2018.<sup>2</sup>

**Figure ATH.1: Population 1950 - 2018**

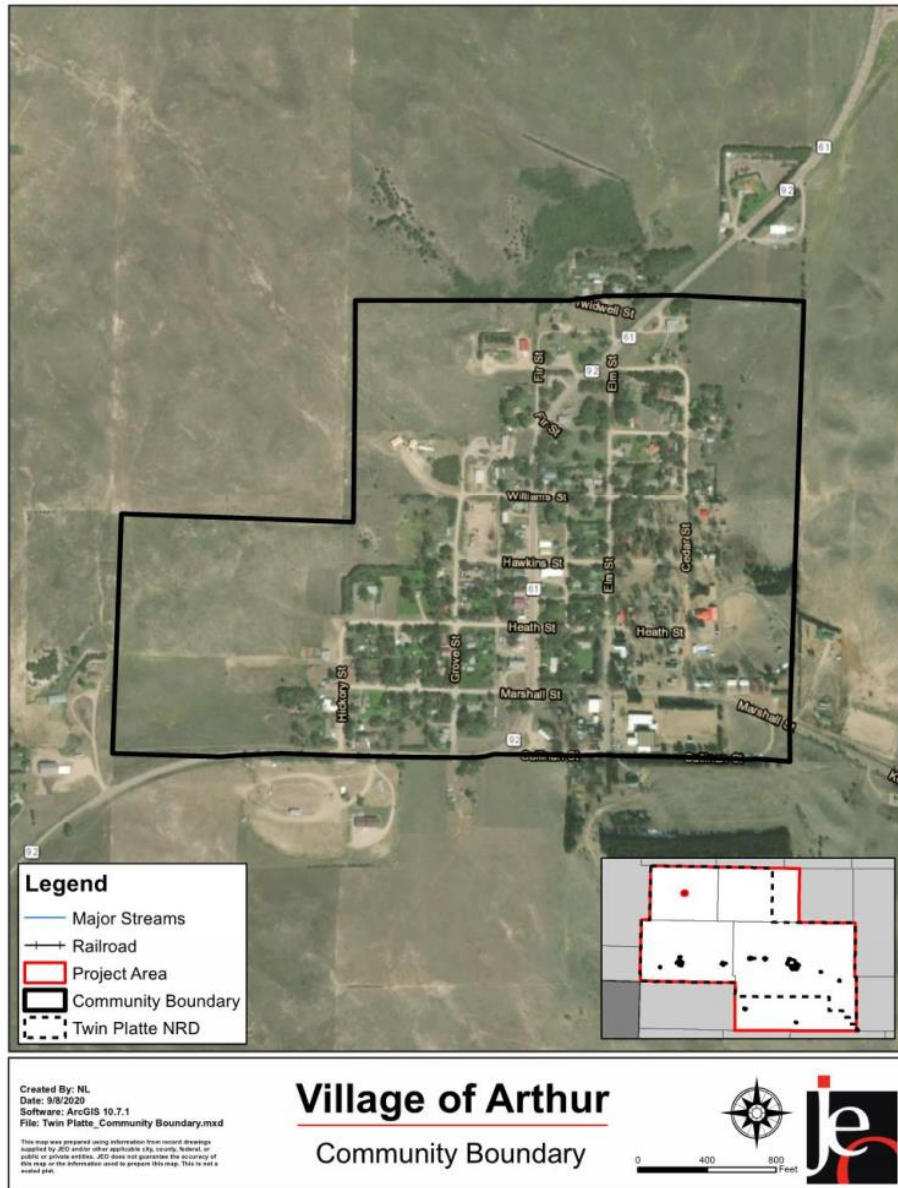


Source: U.S. Census Bureau

<sup>2</sup> United States Census Bureau. 2018. "DP05: Demographic and Housing Estimates [database file]. <https://data.census.gov/cedsci/>

Section Seven: Arthur Profile

Figure ATH.2: Village of Arthur



Section Seven: Arthur Profile

The young, elderly, minority, and low-income populations may be more vulnerable to certain hazards than other groups. In comparison to the county, Arthur's population was:

- **Older.** The median age of Arthur was 53 years old in 2018, compared with Arthur County's median of 47.1 years. Arthur's population grew slightly older since 2010, when the median age was 52.5 years old.<sup>2</sup>
- **Less ethnically diverse.** Since 2010, Arthur grew less ethnically diverse. In 2010, 0.9% of Arthur's population was non-white. By 2018, about 0% was non-white. During that time, the non-white population in the county slightly declined from 4.6% in 2010 to 4.3% in 2018.<sup>2</sup>
- **More likely to be below the federal poverty line.** The poverty rate in the Village of Arthur (11% of people living below the federal poverty line) was slightly higher than the county's poverty rate (10.3%) in 2018.<sup>3</sup>

**Employment and Economics**

In comparison to Arthur County, Arthur's economy had:

- **Different mix of industries.** Arthur's major employment sectors, accounting for 10% or more of employment each, were: agriculture, construction, manufacturing, retail trade, education.<sup>3</sup>
- **Lower median household income.** Arthur's median household income in 2018 (\$40,417) was about \$3,400 lower than the county (\$43,854).<sup>3</sup>
- **Fewer long-distance commuters.** About 64.2% of workers in Arthur commuted for fewer than 15 minutes, compared with about 50.6% of workers in Arthur County. About 34% of workers in Arthur commuted 30 minutes or more to work, compared to about 33.1% of county workers.<sup>4</sup>

**Major Employers**

- **What changes have occurred regarding major employers in Arthur? Major employers identified in 2016 plan include:**
  - Arthur County Schools
  - Arthur County
  - \_\_\_\_\_
  - \_\_\_\_\_
  - \_\_\_\_\_
- **Approximately what percentage of residents commute to other communities for work? To where?**

<sup>3</sup> United States Census Bureau. 2018. "DP03: Selected Economic Characteristics." [database file]. <https://data.census.gov/cedsci/>.  
<sup>4</sup> United States Census Bureau. 2018. "S0802: Means of Transportation to Work by Selected Characteristics." [database file]. <https://data.census.gov/cedsci/>.

Section Seven: Arthur Profile

## Housing

In comparison to Arthur County, Arthur's housing stock was:

- **Newer.** Arthur had a smaller share of housing built prior to 1970 than the county (44.9% compared to 56.2%).<sup>5</sup>
- **More mobile and manufactured housing.** The Village of Arthur had a larger share of mobile and manufactured housing (13.3%) compared to the county (7.2%).<sup>5</sup>
- **More renter-occupied.** About 42% of occupied housing units in Arthur were renter-occupied compared with 32.1% of occupied housing in Arthur County.<sup>5</sup>
- **More occupied.** Approximately 29.6% of Arthur's housing units were vacant compared to 30.1% of units in Arthur County.<sup>5</sup>

The age of housing may indicate which housing units were built prior to the development of state building codes. Vacant housing stock may also be more vulnerable to hazard events if it is poorly maintained. Unoccupied housing may also suggest that future development may be less likely to occur. Communities with a substantial number of mobile homes may be more vulnerable to the impacts of high winds, tornadoes, and severe winter storms if those homes are not anchored correctly. Renter-occupied housing depends on the initiative of landlords for proper maintenance and retrofitting to be resilient to disasters. They are less likely than homeowners to have flood insurance, or to know their risks to flooding and other hazards.

- *Does the community have a large number of mobile homes? Where are they located?*

## Future Development Trends

- *What has changed over the past five years? (For example: new housing or businesses? Demolished buildings? New roads or areas of improvement?)*

- *Were any new structures developed in the floodplain or other hazardous areas? (For example, near chemical sites, the Wildland-Urban Interface, dam or levee inundation areas?) If so, what types of structures and where were they developed?*

---

<sup>5</sup> United States Census Bureau. 2018. "DP04: Selected Housing Characteristics." [database file]. <https://data.census.gov/cedsci/>.



Section Seven: Arthur Profile

- *According to the census data, Arthur’s population is stable. What factors are contributing to the stability?*
- *Are there any new housing developments or new businesses/industry planned for the next five years? Where?*
- *Describe how hazard mitigation principles have been considered in new development (safe rooms, updating/adding building codes, backup generators, etc.).*
- *Do you have a future land-use map? When was it last updated? If so, please provide a copy.*

**Parcel Improvements and Valuation**

The planning team acquired GIS parcel data from the County Assessor to analyze the location, number, and value of property improvements (e.g. buildings, garages, sheds etc.) at the parcel level. The data did not contain the number of structures on each parcel. A summary of the results of this analysis is provided in the following table.

*Data to be included at a later date.*

**Table ATH.2: Parcel Improvements and Value in the Floodplain**

Number of Improvements	Total Improvement Value	Number of Improvements in Floodplain	Value of Improvements in Floodplain	Percentage of Improvements in Floodplain

Source: County Assessor, 2018

Section Seven: Arthur Profile

**Community Lifelines**

**Critical Facilities**

Each participating jurisdiction identified critical facilities vital for disaster response, providing shelter to the public, and essential for returning the jurisdiction’s functions to normal during and after a disaster per the FEMA Community Lifelines guidance. Critical facilities were identified during the original planning process and updated by the local planning team as part of this plan update. The following table and figure provide a summary of the critical facilities for the jurisdiction.

*Below are the critical facilities from the previous hazard mitigation plan. Please remove those that are no longer applicable by crossing them out. New critical facilities can be provided in the second table below. Indicate their approximate location or if they are in the same location and which facilities have a backup generator.*

*Critical facilities can include schools, municipal buildings, pumping stations, water towers, power/water/wastewater plants, community halls, police/fire/rescue departments, hospitals, etc.*

**Table ATH.4: Critical Facilities**

Name	Address, Intersection, or Same Location	Generator (Y/N)
County Shop		
Courthouse		
Fire Station		
Gas Station		
High School		
Substation		
Village Shop		

Name	Address or Intersection	Generator (Y/N)

**Figure ATH.3: Critical Facilities**

**Governance**

A community’s governance indicates the number of boards or offices that may be available to help implement hazard mitigation actions. The Village of Arthur is governed by a village board; other governmental offices and departments are listed below.

*Please verify the following and provide any additional offices, departments, or committees:*

- **Clerk/Treasurer/Secretary**
- **Street Superintendent**
- **Other:** \_\_\_\_\_
- \_\_\_\_\_
- \_\_\_\_\_
- \_\_\_\_\_

**Capability Assessment**

The capability assessment consisted of a review of local existing policies, regulations, plans, and programs with hazard mitigation capabilities. The following tables summarize the community's planning and regulatory capability; administrative and technical capability; fiscal capability; educational and outreach capability; and overall capability to implement mitigation projects.

*What grants have you applied for in the last five years?*

*Please list which grants your community has been awarded.*

*Are municipal funds sufficient to pursue new capital projects or are they limited to maintaining current facilities and systems?*

*Are a large portion of funds already dedicated to a specific project? If yes which project?*

*Has the amount of municipal funds increased, decreased, or stayed the same over recent years?*

*Please check the right-hand column in the following table for your community. The table includes responses from the 2016 HMP. If there have been changes or updates, please cross out the answer and provide the updated answer and date.*

**Table ATH.5: Capability Assessment**

Survey Components/Subcomponents		Yes/No
<b>Planning &amp; Regulatory Capability</b>	Comprehensive Plan	Yes
	Capital Improvements Plan	Yes
	Economic Development Plan	No
	Local Emergency Operations Plan	Yes
	Floodplain Management Plan	No

Section Seven: Arthur Profile

Survey Components/Subcomponents		Yes/No
	Storm Water Management Plan	No
	Zoning Ordinance	Yes
	Subdivision Regulation/Ordinance	Yes
	Floodplain Ordinance	No
	Building Codes	No
	National Flood Insurance Program	No
	Community Rating System	No
	Other (if any)	
<b>Administrative &amp; Technical Capability</b>	Planning Commission	Yes
	Floodplain Administration	No
	GIS Capabilities	
	Chief Building Official	No
	Civil Engineering	No
	Local Staff Who Can Assess Community's Vulnerability to Hazards	No
	Grant Manager	No
	Mutual Aid Agreement	
Other (if any)		
<b>Fiscal Capability</b>	Capital Improvement Plan/ 1- & 6-Year plan	Yes
	Applied for grants in the past	
	Awarded a grant in the past	
	Authority to Levy Taxes for Specific Purposes such as Mitigation Projects	Yes
	Gas/Electric Service Fees	No
	Storm Water Service Fees	No
	Water/Sewer Service Fees	No
	Development Impact Fees	No
	General Obligation Revenue or Special Tax Bonds	No
Other (if any)		
<b>Education &amp; Outreach Capability</b>	Local citizen groups or non-profit organizations focused on environmental protection, emergency preparedness, access and functional needs populations, etc. Ex. CERT Teams, Red Cross, etc.	No
	Ongoing public education or information program (e.g., responsible water use, fire safety, household preparedness, environmental education)	No
	Natural Disaster or Safety related school programs	No
	StormReady Certification	No
	Firewise Communities Certification	No

Section Seven: Arthur Profile

Survey Components/Subcomponents	Yes/No
Tree City USA	No
Other (if any)	

**Please rate your jurisdiction's overall capability in the following ways (Limited, Moderate, or High)**

Overall Capability	Limited/Moderate/High
Financial resources to implement mitigation projects	
Staff/expertise to implement projects	
Public support to implement projects	
Time to devote to hazard mitigation	

**Plan Integration**

**The following Plan Integration section is from the previous HMP. What plan updates have occurred since the last HMP?**

The Village of Arthur has a comprehensive plan that has not recently updated and does not discuss natural hazards. Arthur has an annex to the County's Local Emergency Operations Plan that was last updated in 2012. The plan addresses a number of hazards including flood, dam failure, fire, hazardous materials, agricultural disease, and terrorism. The LEOP mitigates the impacts of these hazards by increasing the local officials' awareness of the assigned responsibilities and appropriate response.

Although it is identified in the capability assessment that Arthur has some plans and ordinances in place, they are not currently integrated with the hazard mitigation plan. When the village does update local planning mechanisms, Arthur will work to integrate the goals and objectives of the hazard mitigation plan within them (as appropriate). Currently there is not a plan or schedule related to the update of other (nonHMP) local planning mechanisms, thus there is no formal strategy for plan integration at this time. Further, the priorities and mitigation strategies included in this plan will be revisited annually, as established in the plan review section of this document, for consideration during the development of the annual budget. As resources are available mitigation projects will be implemented.

**What community plans currently incorporate hazards and mitigation right now? How do they incorporate hazards/mitigation?**

Section Seven: Arthur Profile

**Historical Occurrences**

See the Arthur County profile for historical hazard events, including the number of events, damage estimates, and any fatalities or injuries.

**Hazard Prioritization**

The hazards discussed in detail below were either identified in the previous HMP and determined to still be of top concern or were selected by the local planning team from the regional list as relevant hazards for the community. The selected hazards were prioritized by the local planning team based on historical hazard occurrences, potential impacts, and the community's capabilities. For more information regarding regional hazards, please see *Section Four: Risk Assessment*.

*Please review the following section and answer the provided questions. Note that reported data in the following paragraphs is from the 2016 plan and does not reflect new data available through 2020.*

**Chemical Spills (Transportation)**

Chemical transportation was identified as a top concern for the village. The local Planning Team mentioned an incident located just outside the village about twenty years ago involving a truck carrying anhydrous ammonia. The truck was involved in an accident leading to some of the anhydrous ammonia to be spilled. Although there haven't been any recent occurrences, trucks carrying chemicals and propane frequently cross the County along Highways 92 and 61. Arthur has a lack of resources if there was a chemical spill in the village. North Platte Hazmat would respond to local incidents.

*Is this hazard still of concern for your community? (circle one)      Yes      No  
If no, please skip the following questions.*

*Where is this hazard likely to occur? Where has it occurred in the past?*

*How often does this hazard occur in the community?*

*What are the potential impacts (population and built environment) your community could see or has seen as a result of this hazard?*

Section Seven: Arthur Profile

*What actions or projects are needed in the future to reduce your risk or improve your response to this hazard?*

**Grass/Wildfire**

Wildfire was identified as a top concern by the local Planning Team. Although there has not been a wildfire that has caused damage within the village, the Planning Team indicated that wildfires are a common occurrence in the surrounding area. In March of 2015, there was a large wildfire that started in Arthur County and spread to Keith and McPherson Counties. Wildfires have the ability to spread quickly through the County due to the vegetation and generally dry conditions.

*Is this hazard still of concern for your community? (circle one)      Yes      No*  
*If no, please skip the following questions.*

*Have there been any changes since the last plan? Does this accurately describe the community's risk or concern related to this hazard? Please describe past events and their impacts on the community.*

*What actions or projects are currently planned to reduce your risk or improve your response to this hazard?*

*What actions or projects are needed in the future to reduce your risk or improve your response to this hazard?*

Section Seven: Arthur Profile

**Hail**

Hail is a frequently occurring hazard in Arthur. There have been 108 recorded hail events in Arthur since 1996. These hail events have caused \$66,000 in property damages. Recently, there was a substantial hail event in Arthur on Father's Day 2015. This event caused significant damages to buildings and property within the village.

*Is this hazard still of concern for your community? (circle one)      Yes      No*  
*If no, please skip the following questions.*

*Where is this hazard likely to occur? Where has it occurred in the past?*

*How often does this hazard occur in the community?*

*What are the potential impacts (population and built environment) your community could see or has seen as a result of this hazard?*

*What actions or projects are needed in the future to reduce your risk or improve your response to this hazard?*

**Severe Thunderstorms**

Severe thunderstorms occur several times a year in Arthur. According to the NCDC, severe thunderstorms caused approximately \$58,500 in property damages from 1996 to 2014. Local concerns regarding this hazard include power outages and flash floods leading to impassable roads.

*Is this hazard still of concern for your community? (circle one)      Yes      No*  
*If no, please skip the following questions.*



Section Seven: Arthur Profile

*Where is this hazard likely to occur? Where has it occurred in the past?*

*How often does this hazard occur in the community?*

*What are the potential impacts (population and built environment) your community could see or has seen as a result of this hazard?*

*What actions or projects are needed in the future to reduce your risk or improve your response to this hazard?*

**Severe Winter Storms**

Severe winter weather is a regular part of the climate in Arthur, occurring every year. Local concerns regarding this hazard include: closed transportation routes, loss of power, and aged population's lack of mobility. The local Planning Team indicated that the community experiences power outages a few times a year. The snow removal resources have been determined adequate for municipal needs.

*Is this hazard still of concern for your community? (circle one)      Yes      No*

*If no, please skip the following questions.*

*Where is this hazard likely to occur? Where has it occurred in the past?*

Section Seven: Arthur Profile

*How often does this hazard occur in the community?*

*What are the potential impacts (population and built environment) your community could see or has seen as a result of this hazard?*

*What actions or projects are needed in the future to reduce your risk or improve your response to this hazard?*

**Tornadoes**

Tornadoes have the potential for significant damages and loss of life. According to the NCDC, there have been four tornadic events in or near Arthur since 1996 that have caused \$35,000 in property damages. Although the village did not identify safe rooms, the local Planning Team indicated that residents can go to the church basement, high school, and courthouse in the Village of Arthur for shelter. Arthur does have a tornado siren and is in the process of getting a new one.

*Is this hazard still of concern for your community? (circle one)      Yes      No*  
*If no, please skip the following questions.*

*Where is this hazard likely to occur? Where has it occurred in the past?*

*How often does this hazard occur in the community?*

Section Seven: Arthur Profile

**What are the potential impacts (population and built environment) your community could see or has seen as a result of this hazard?**

**What actions or projects are needed in the future to reduce your risk or improve your response to this hazard?**

**The following hazards are evaluated in the regional Hazard Mitigation Plan. From this list, please circle any other hazards which your community is pursuing mitigation efforts for. If top concerns are already identified for your community, please skip this section.**

Agricultural Animal & Plant Disease	Drought	Levee Failure
Chemical Spills – Fixed Site	Earthquakes	Public Health Emergency
Chemical Spills – Transportation	Extreme Heat	Severe Thunderstorms
Dam Failure	Flooding	Severe Winter Storms
	Grass/Wildfires	Terrorism
	Hail	Tornadoes
	High Winds	

**In the space below please provide a description for additional hazards including past event descriptions, injuries, fatalities, property/crop damages, and current or future mitigation efforts.**

**Hazard:** \_\_\_\_\_  
**Justification:**

Section Seven: Arthur Profile

**Mitigation Strategy**

Arthur has limited fiscal capabilities and administrative support available for implementing mitigation projects. The community will continue to benefit from strong partnerships, such as with the county, and TPNRD and will need to explore outside funding assistance for project implementation.

*Please review the following mitigation actions identified in the previous HMP, make any changes needed, and fill in missing information. Mark if each action has been completed, kept, or should be removed and describe the current status of the action.*

**Review of Actions**

Mitigation Action	Backup and Emergency Generators
<b>Description</b>	Identify and evaluate current backup and emergency generators. Obtain additional generators based on identification and evaluation.
<b>Hazard(s) Addressed</b>	Tornadoes, High Winds, Severe Winter Storms, Severe Thunderstorms, Flooding
<b>Estimated Cost</b>	\$20,000 - \$50,000 per generator
<b>Funding</b>	Village General Fund, Private Entities
<b>Timeline</b>	2-5 Years
<b>Priority</b>	Low
<b>Lead Agency</b>	Emergency Manager, Village Board
<b>UPDATE (CIRCLE ONE)</b>	Completed                      Ongoing                      Remove
<b>Status</b>	What is the current status of this project?

Mitigation Action	Improve Warning Systems
<b>Description</b>	Evaluate current warning systems, improve warning systems/develop new warning system, and obtain/upgrade warning system equipment and methods, including alert sirens. Identify locations of weather warning radios, improve weather radio system, and obtain/upgrade weather radios.
<b>Hazard(s) Addressed</b>	All Hazards
<b>Estimated Cost</b>	\$350,000-\$400,000
<b>Funding</b>	County General Fund, Private Residents
<b>Timeline</b>	5+ Years
<b>Priority</b>	High
<b>Lead Agency</b>	Emergency Manager, County Board, Village Board
<b>UPDATE (CIRCLE ONE)</b>	Completed                      Ongoing                      Remove
<b>Status</b>	What is the current status of this project?

Section Seven: Arthur Profile

Mitigation Action	Provide Adequate Fire Protection
Description	Identify and evaluate current fire hall to improve and/or replace. Identify and evaluate current firefighting equipment locations 4. Improve and/or add firefighting equipment at additional locations
Hazard(s) Addressed	Wildfire, Severe Thunderstorms, Severe Winter Storms
Estimated Cost	\$30,000+
Funding	Village General Fund, County General Fund
Timeline	5+ Years
Priority	Medium
Lead Agency	Fire Chief, Emergency Management, Village Board
<b>UPDATE (CIRCLE ONE)</b>	Completed                      Ongoing                      Remove
<b>Status</b>	What is the current status of this project?

Mitigation Action	Reduce Tree Damage & Damage From Trees
Description	Conduct tree inventory, develop tree maintenance/trimming program, and implement tree maintenance/trimming program
Hazard(s) Addressed	Wildfire, Tornados, Severe Thunderstorms, Severe Winter Storms, Hail
Estimated Cost	\$500 - \$5,000
Funding	County General Fund, Village General Fund
Timeline	5+ Years
Priority	Medium
Lead Agency	Village Board, County Board, Twin Platte NRD, Emergency Management
<b>UPDATE (CIRCLE ONE)</b>	Completed                      Ongoing                      Remove
<b>Status</b>	What is the current status of this project?

**Completed Mitigation Actions**

**Continued Mitigation Actions**

**New Mitigation Actions**

**Removed Mitigation Actions**

**Example of Plan Integration Worksheet**



# Twin Platte NRD

**HAZARD MITIGATION PLAN**

**PLAN INTEGRATION WORKSHEET**

JEO CONSULTING GROUP  
FEBRUARY 2021

Name(s): \_\_\_\_\_ Jurisdiction: \_\_\_\_\_

## INTRODUCTION

Thank you for participating in the Twin Platte NRD Hazard Mitigation Plan.

The Hazard Mitigation Plan determines vulnerabilities to natural and human-caused hazards in your jurisdiction, then identifies mitigation projects to reduce or eliminate those vulnerabilities. An approved HMP is a requirement of the Federal Emergency Management Agency (FEMA) for jurisdictions to become eligible for Hazard Mitigation Assistance grants.

FEMA encourages jurisdictions to integrate their hazard mitigation plan with other planning mechanisms, such as their building codes, comprehensive plans, zoning ordinances, etc. to ensure that plans across a jurisdiction are consistent and reflect overall goals.

This worksheet will identify the ways that other plans in your jurisdiction are, or could be, aligned with hazard mitigation principles. The information you provide will be used to develop the plan integration section of your jurisdictional profile.

**Please complete these worksheets and return them to JEO Consulting Group by Monday March 15, 2021.**

Email: [kdietrich@jeo.com](mailto:kdietrich@jeo.com)

Phone: 402-742-7213

Fax: 402-435-4110

Mail: JEO Consulting Group  
Attn: Karl Dietrich  
2700 Fletcher Ave  
Lincoln, NE 68504

### STEP 1

Please complete the following table.

Which of these plans/ordinances does your jurisdiction have?

Plan/Ordinance	Yes/No	Year of most recent update
Comprehensive Plan		
Zoning Ordinance		
Subdivision Regulations		
Floodplain Regulations/Ordinance		
Building Code		
Capital Improvements Plan		
Wellhead Protection Plan		
Water System Emergency Response Plan		
Community Wildfire Protection Plan		
Other:		
Other:		

For any additional plans your community has, e.g. Drought Management Plan, Evacuation Plan, Stormwater Management Plan, etc., please send JEO a copy.

### STEP 2

For the plans/ordinances which your community has, please complete the relevant pages in this worksheet. **You do not have to complete the sections for plans/ordinances which your community does not have.**



**COMPREHENSIVE PLAN**

Does the comprehensive plan discuss natural hazards?  Yes  No

If yes, which hazards are discussed?

**Does your comprehensive plan:**

Contain goals/objectives aimed at Safe Growth:  Yes  No  In future update

Direct development away from the floodplain:  Yes  No  In future update

Direct development away from chemical storage facilities:  Yes  No  In future update

Direct housing and vulnerable populations away from major transportation routes:  Yes  No  In future update

Encourage infill development:  Yes  No  In future update

Encourage "clustering of development" in sensitive areas:  Yes  No  In future update

Encourage elevation of structures located in the floodplain:  Yes  No  In future update

Identify areas that need emergency shelters:  Yes  No  In future update

Encourage preservation of open space in hazard-prone areas:  Yes  No  In future update

Is there a plan or timeline to update your comprehensive plan?  Yes  No

If yes, explain the plan or timeline.

How will you incorporate the information from the hazard mitigation plan into your next comprehensive plan? Please consider the items above and any other enhancements that you would like to include in future comprehensive plan updates.

**WELLHEAD PROTECTION PLAN / WATER SYSTEM EMERGENCY RESPONSE PLAN / COMMUNITY WILDFIRE PROTECTION PLAN**

Please provide an electronic copy of the plan(s) to JEO.

**ZONING ORDINANCE / FLOODPLAIN ORDINANCE / SUBDIVISION REGULATIONS**

Is there a plan or timeline to update your Zoning Ordinance / Floodplain Ordinance / Subdivision Regulations?

Yes  No

If yes, explain the plan or timeline.

**Does the Zoning Ordinance / Floodplain Regulations / Subdivision Regulations:**

Contain floodplain maps?  Yes  No  In future update

Prohibit development within the floodplain?  Yes  No  In future update

Discourage development in the floodplain?  Yes  No  In future update

Limit population density in the floodplain?  Yes  No  In future update

Identify floodplain areas as parks or open space?  Yes  No  In future update

Require more than one foot of elevation above Base Flood Elevation in the floodplain?  
 Yes  No  In future update

Discourage development near chemical storage sites?  Yes  No  In future update

Discourage development along major transportation routes?  Yes  No  In future update

Consider wildfire and the wildland urban interface?  Yes  No  In future update

Include well setback requirements?  Yes  No  In future update

Include the ability to implement water restrictions?  Yes  No  In future update

Do subdivision regulations allow density transfers in hazard areas?  
 Yes  No  In future update

Do the subdivision regulations restrict subdivision of land within or adjacent to the floodplain?  
 Yes  No  In future update

**BUILDING CODE**

If the building codes are based on the International Building Codes, what year/version is in effect?

Have you made any amendments to the Code? If yes, please describe.

**CAPITAL IMPROVEMENT PLAN**

Is there a plan or timeline to update your Capital Improvement Plan?  Yes  No

If yes, explain the plan or timeline.

**Does the Capital Improvement Plan include:**

Stormwater projects?  Yes  No  In future update

Upsizing of culverts and drainage structures?  Yes  No  In future update

Upgrading storm sewer systems?  Yes  No  In future update

Improving transportation routes for drainage?  Yes  No  In future update

Widening roadways that would improve evacuations if they were required?  
 Yes  No  In future update

Bridge improvements?  Yes  No  In future update

Installing new municipal wells?  Yes  No  In future update

Upsizing water distribution pipes?  Yes  No  In future update

Installing water meters for residential structures?  Yes  No  In future update

Updating electrical distribution system?  Yes  No  In future update

Burying powerlines?  Yes  No  In future update

Installing emergency generators in critical facilities?  Yes  No  In future update

Constructing a new fire hall?  Yes  No  In future update

Constructing a new police headquarters?  Yes  No  In future update

Constructing a new public works facility?  Yes  No  In future update

Constructing a new community center?  Yes  No  In future update

Constructing a community storm shelter?  Yes  No  In future update

Constructing a new water treatment facility?  Yes  No  In future update

What other types of projects are presently included in the capital improvement plan?